

23 bad + 1851 good MF/1879MF projected (98%) - 5 missing MFs
 Avg interval = 180 secs
 Re = 84.39 (53.30, -65.42, 0.80 GSE)

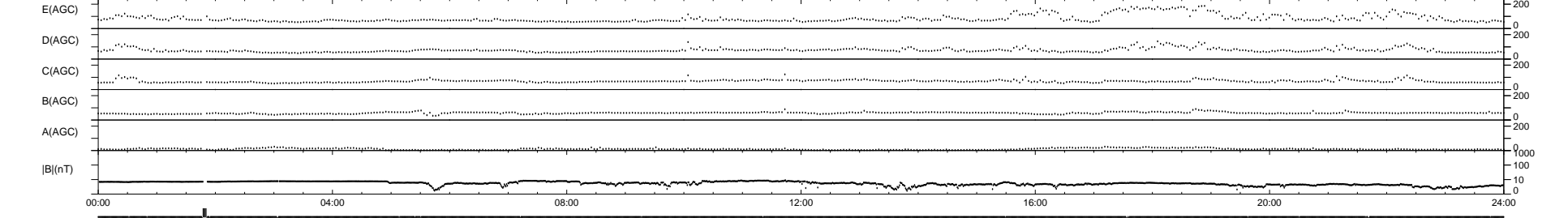
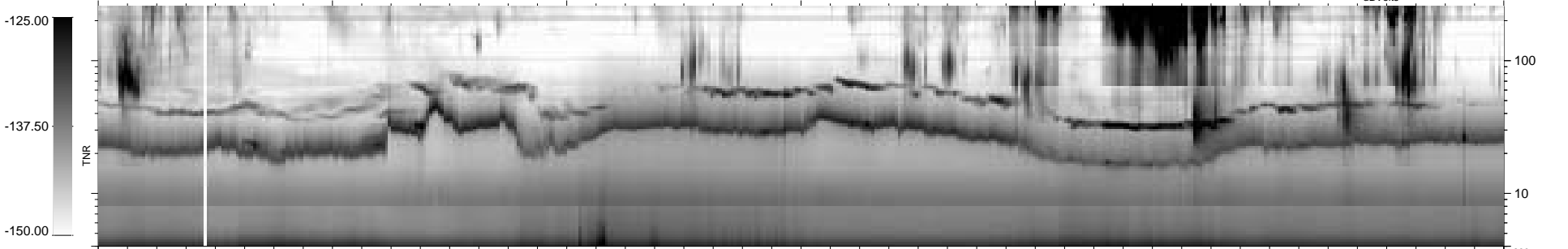
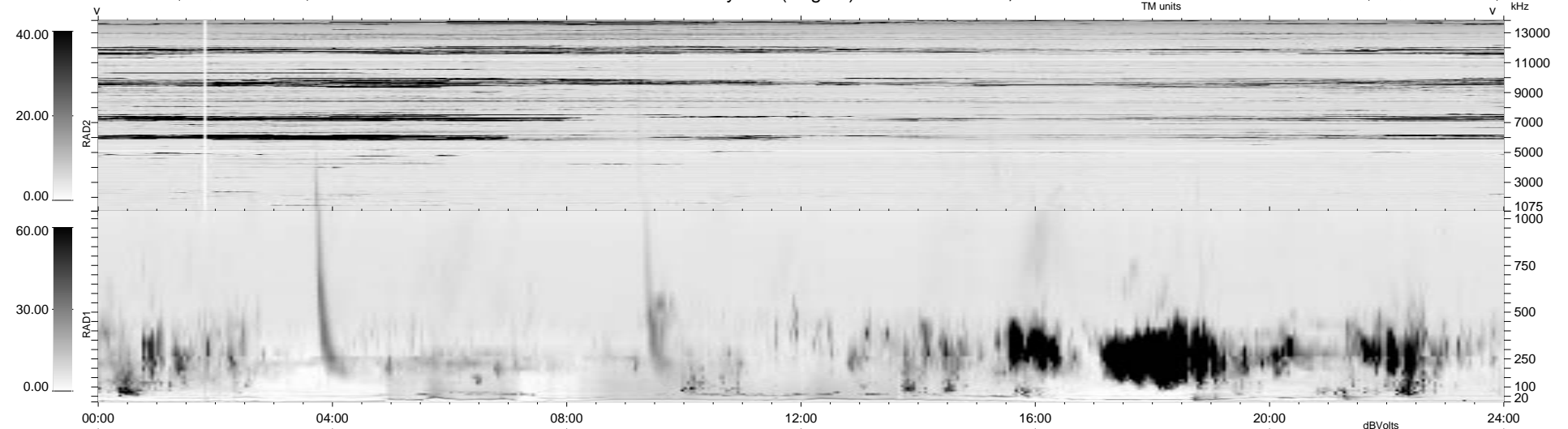
1.7d VMS-SunOS

LZ version = v01

WIND/WAVES Summary Plot (Page 1) for 28-OCT-1997, DOY = 301

DAILY Tue Sep 23, 2008

Re = 91.67 (64.10, -65.47, 2.72 GSE)



```

RAD2
Antenna Ey .....
Mode LIN(1) .....
SUM/SEP SUM .....
Toggle OFF .....

RAD1
Antenna Ex .....
Mode LIS(2,3) .....
SUM/SEP SUM .....
Toggle OFF .....

TNR
Antenna ExEy .....
Mode A-32 .....
Sweep ABCDE .....
  
```