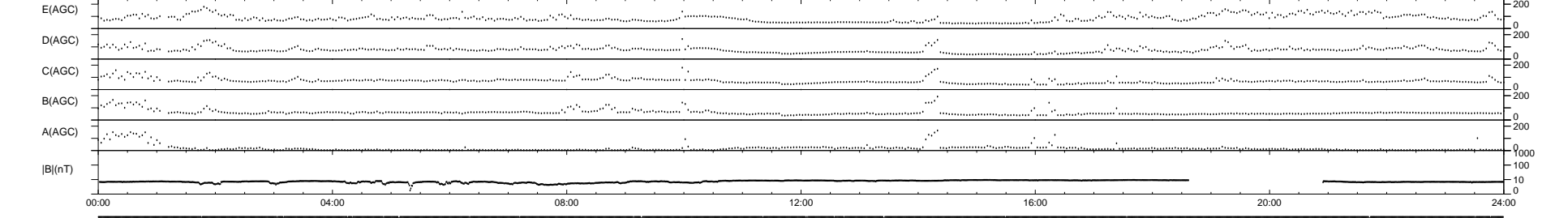
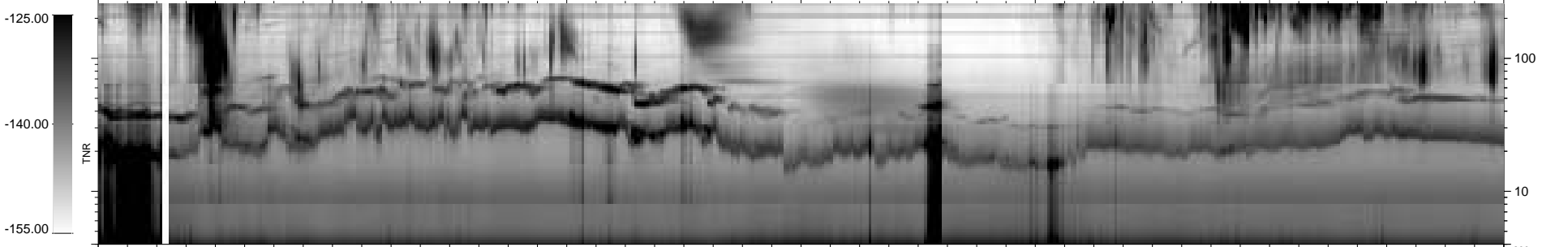
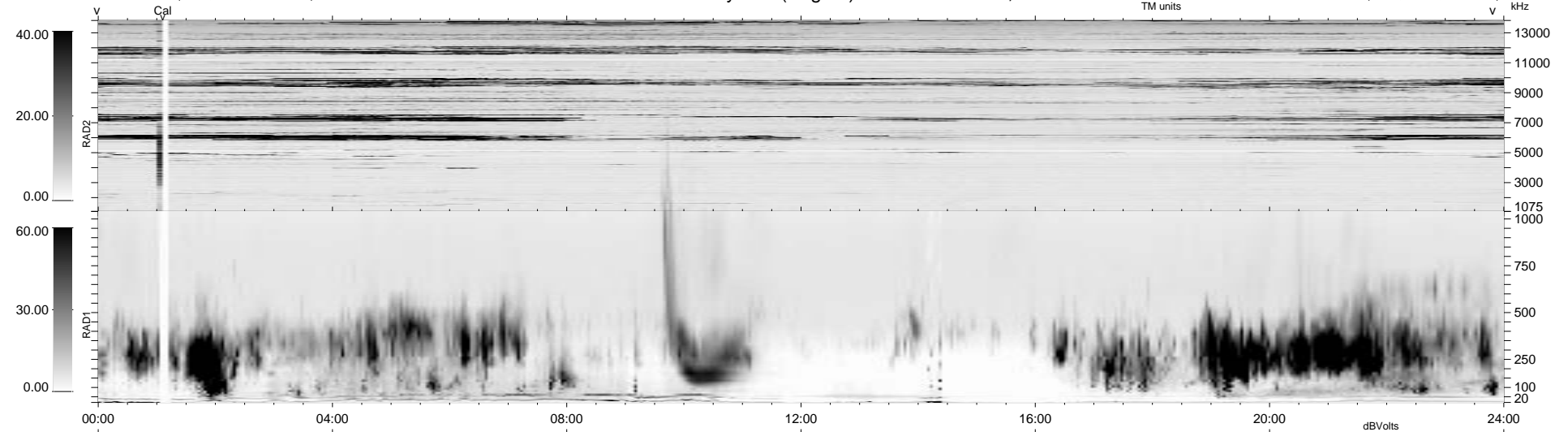


26 bad + 1852 good MF/1878MF projected (98%) - 0 missing MFs
 Avg interval = 180 secs
 Re = 76.47 (41.40, -64.28, -1.15 GSE)

1.7d VMS-SunOS LZ version = v01
 DAILY Tue Sep 23, 2008
 Re = 84.33 (53.22, -65.42, 0.79 GSE)

WIND/WAVES Summary Plot (Page 1) for 27-OCT-1997, DOY = 300



RAD2
 Antenna Ey
 Mode LIN(1)
 SUM/SEP SUM
 Toggle OFF
 RAD1
 Antenna Ex
 Mode LIS(2,3)
 SUM/SEP SUM
 Toggle OFF
 TNR
 Antenna ExEy
 Mode A-32
 Sweep ABCDE