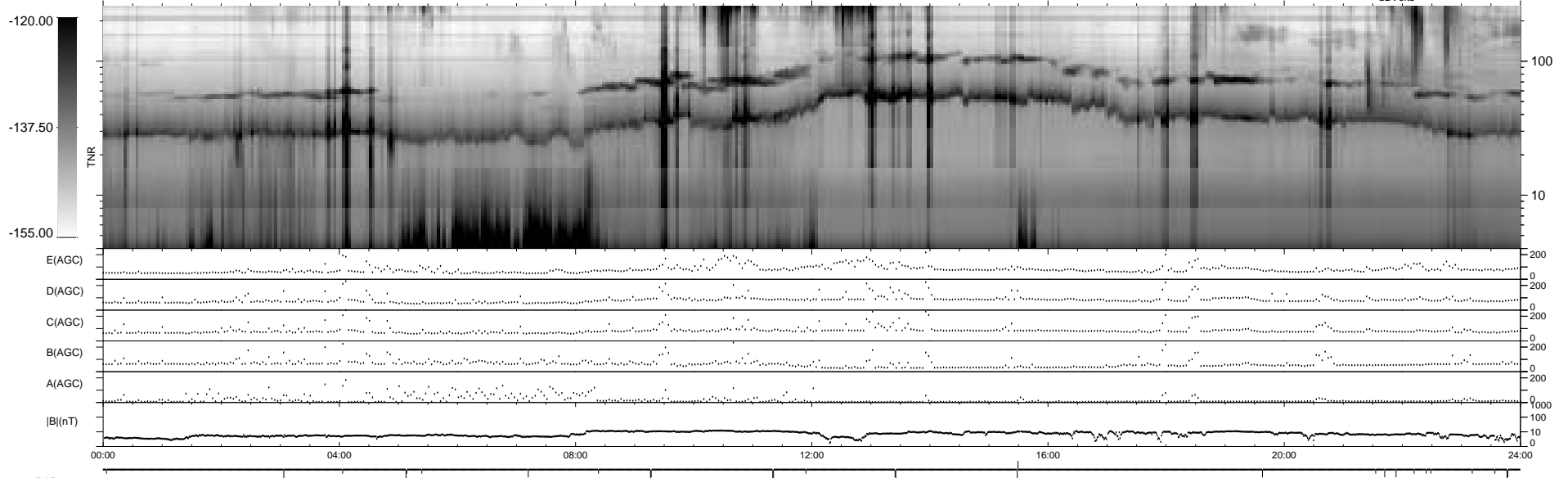
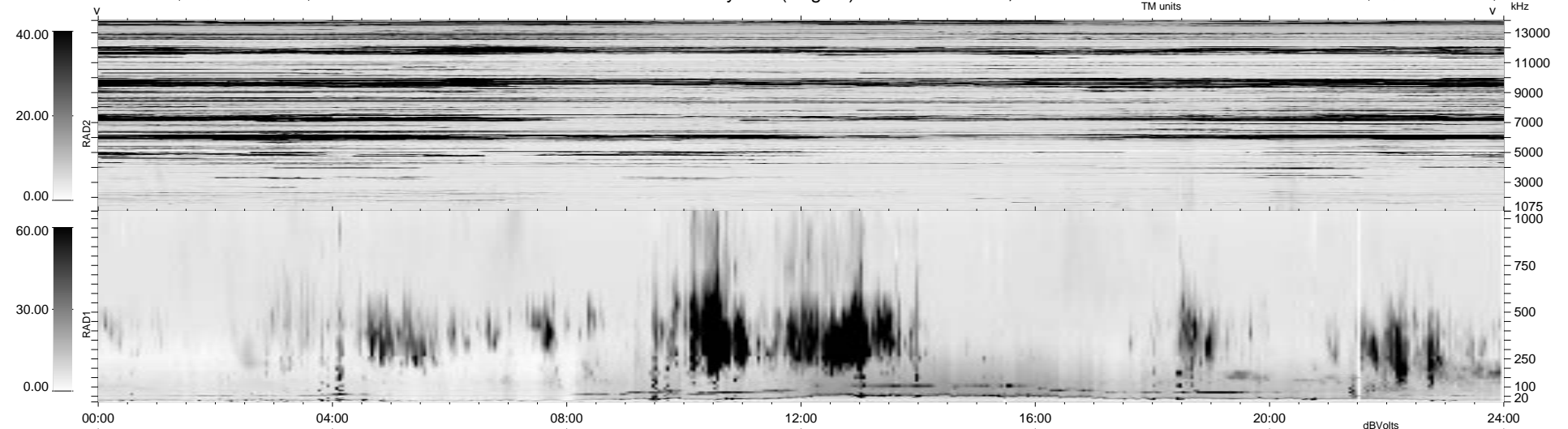


27 bad + 1850 good MF/1878MF projected (98%) - 1 missing MF
 Avg interval = 180 secs
 Re = 34.95 (-7.76, -33.80, -4.30 GSE)

1.7d VMS-SunOS LZ version = v01

WIND/WAVES Summary Plot (Page 1) for 23-OCT-1997, DOY = 296

DAILY Tue Sep 23, 2008
 Re = 46.98 (4.18, -46.57, -4.58 GSE)



RAD2
 Antenna Ey
 Mode LIN(1)
 SUM/SEP SUM
 Toggle OFF
 RAD1
 Antenna Ex
 Mode LIS(2,3)
 SUM/SEP SUM
 Toggle OFF
 TNR
 Antenna ExEy
 Mode A-32
 Sweep ABCDE