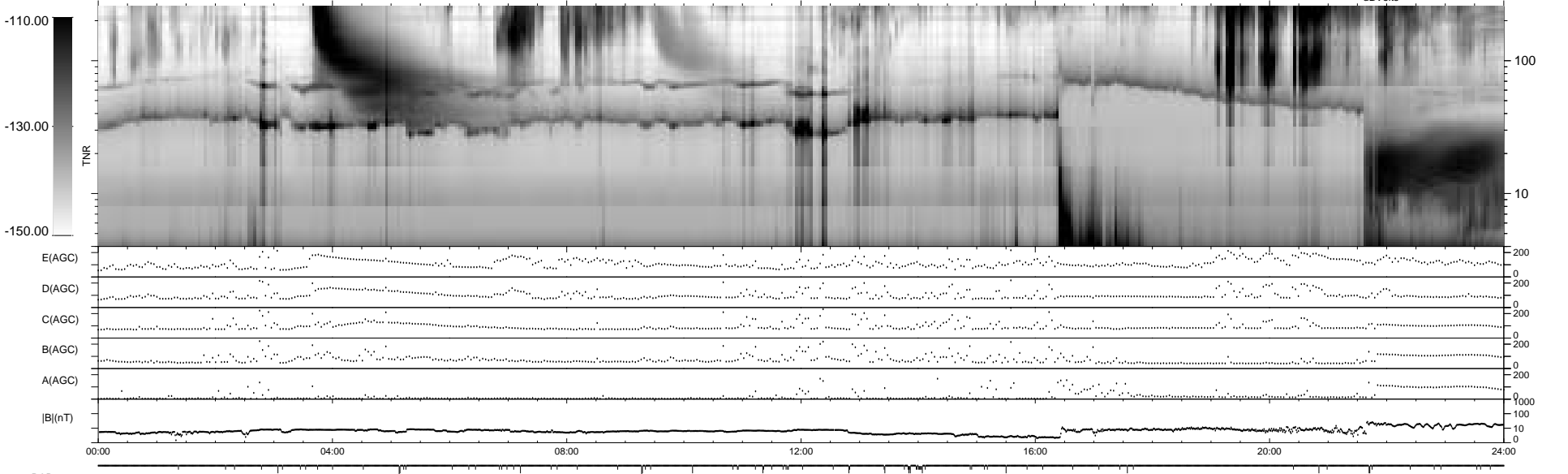
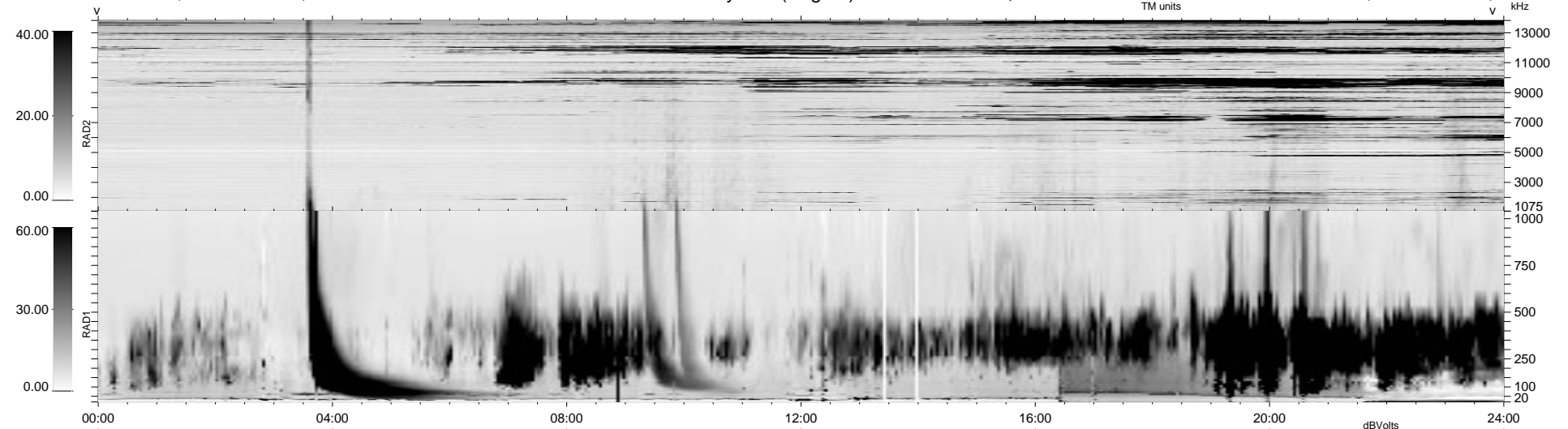


87 bad + 1792 good MF/1879MF projected (95%) - 0 missing MFs
 Avg interval = 180 secs
 Re = 30.40 (20.50, 22.07, 4.08 GSE)

1.7d VMS-SunOS LZ version = v01

WIND/WAVES Summary Plot (Page 1) for 20-OCT-1997, DOY = 293

DAILY Tue Sep 23, 2008
 Re = 17.39 (-5.22, 16.53, 1.41 GSE)



RAD2
 Antenna Ey
 Mode LIN(1)
 SUM/SEP SUM
 Toggle OFF
 RAD1
 Antenna Ex
 Mode LIS(2,3)
 SUM/SEP SUM
 Toggle OFF
 TNR
 Antenna ExEy
 Mode A-32
 Sweep ABCDE