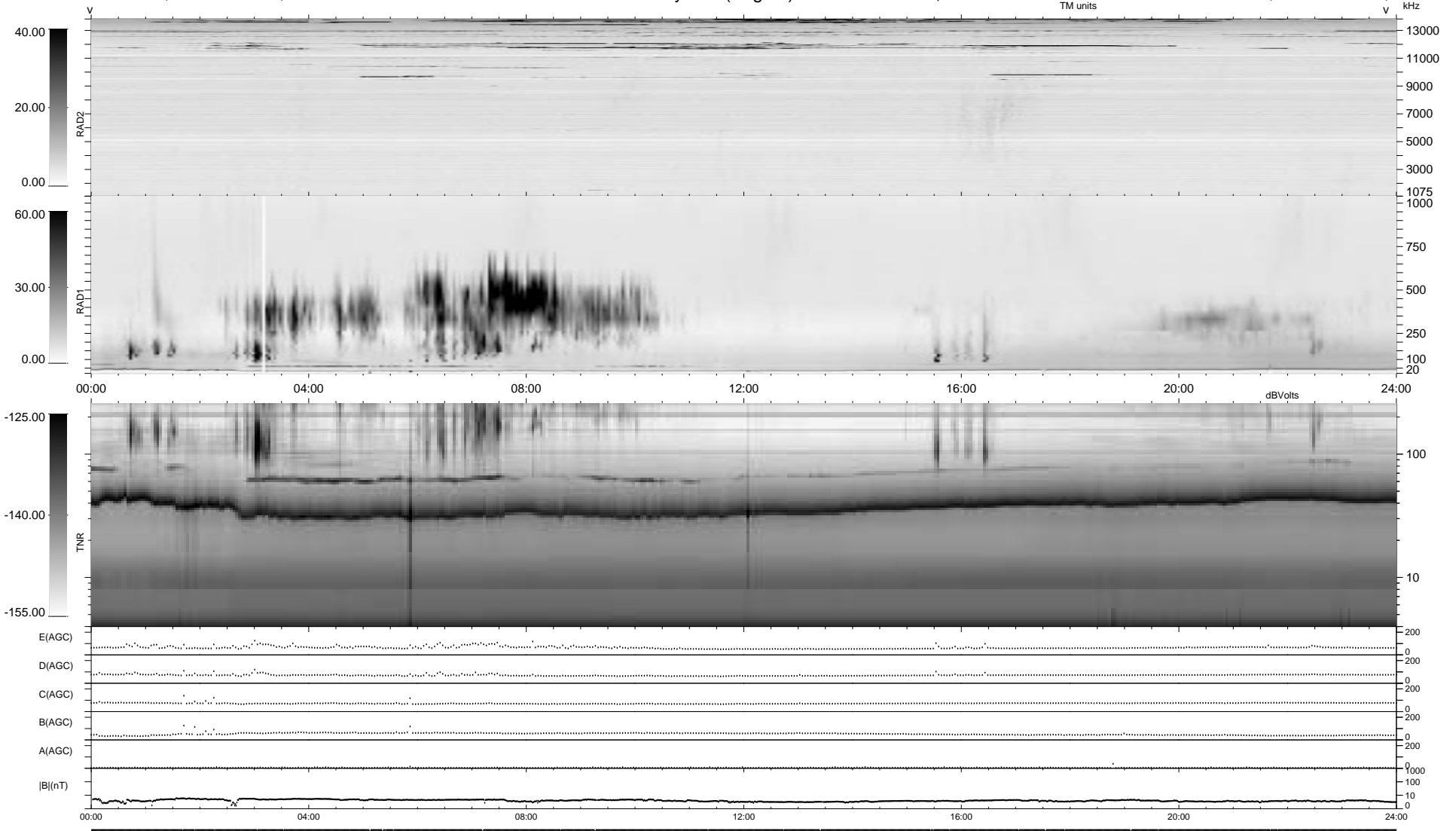


32 bad + 1846 good MF/1878MF projected (98%) - 0 missing MFs
 Avg interval = 180 secs
 Re = 53.62 (52.29, 10.73, 5.11 GSE)

1.7d VMS-SunOS LZ version = v01

WIND/WAVES Summary Plot (Page 1) for 18-OCT-1997, DOY = 291

DAILY Tue Sep 23, 2008
 Re = 43.23 (39.22, 17.50, 4.97 GSE)



RAD2
 Antenna Ey
 Mode LIN(1)
 SUM/SEP SUM
 Toggle OFF

RAD1
 Antenna Ex
 Mode LIS(2,3)
 SUM/SEP SUM
 Toggle OFF

TNR
 Antenna ExEy
 Mode A-32
 Sweep ABCDE