

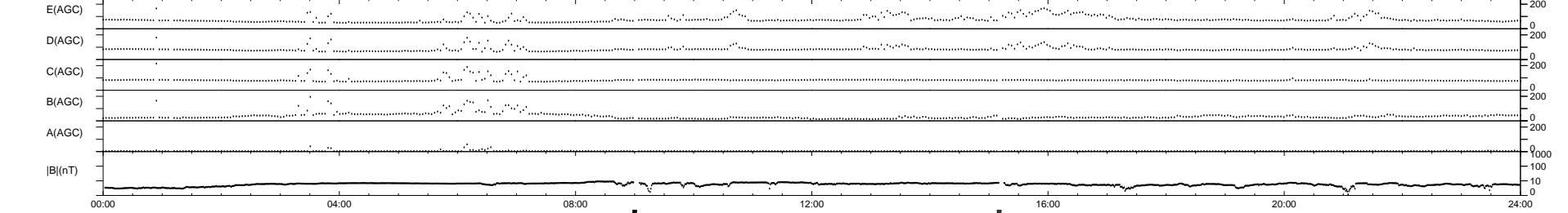
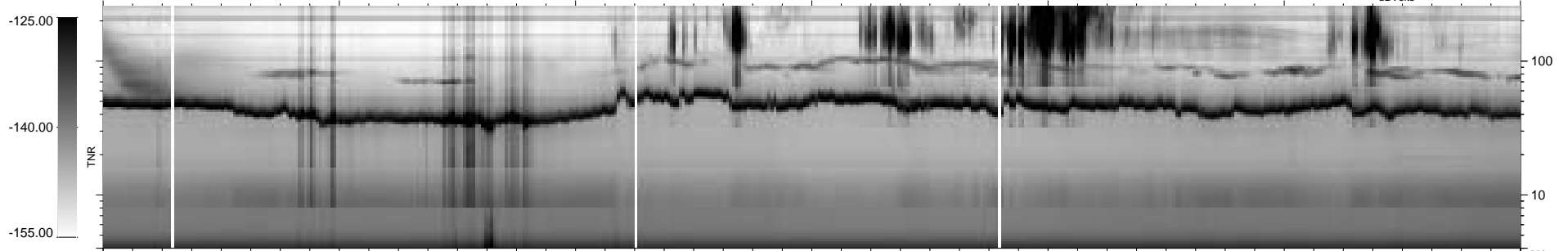
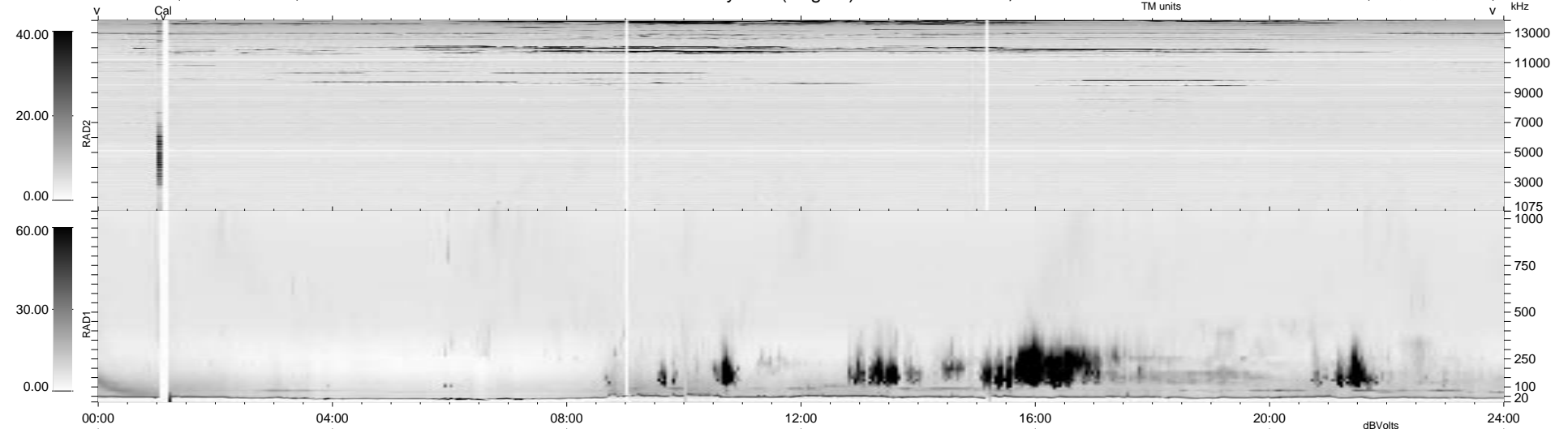
19 bad + 1847 good MF/1878MF projected (98%) - 12 missing MFs
 Avg interval = 180 secs
 Re = 62.12 (61.84, 3.44, 4.85 GSE)

1.7d VMS-SunOS LZ version = v01

DAILY Tue Sep 23, 2008

Re = 53.69 (52.37, 10.68, 5.10 GSE)

WIND/WAVES Summary Plot (Page 1) for 17-OCT-1997, DOY = 290



```

RAD2
Antenna Ey .....
Mode LIN(1) .....
SUM/SEP SUM .....
Toggle OFF .....

RAD1
Antenna Ex .....
Mode LIS(2,3) .....
SUM/SEP SUM .....
Toggle OFF .....

TNR
Antenna ExEy .....
Mode A-32 .....
Sweep ABCDE .....
  
```