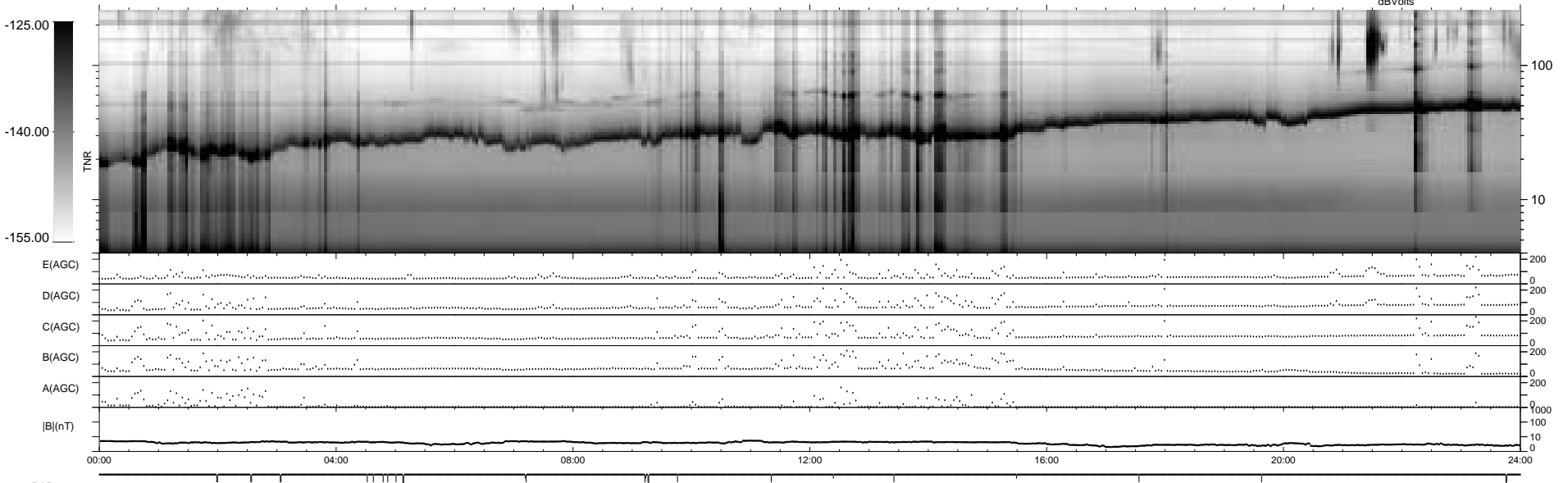
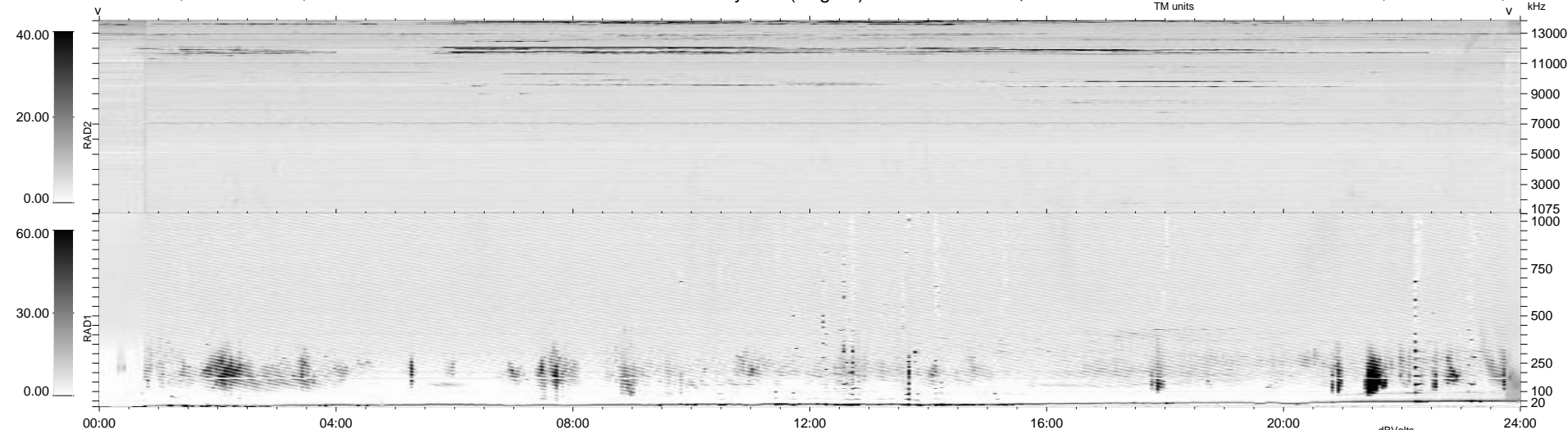


28 bad + 1851 good MF/1879MF projected (98%) - 0 missing MFs
 Avg interval = 180 secs
 Re = 68.98 (68.74, -3.75, 4.35 GSE)

1.7d VMS-SunOS LZ version = v01

WIND/WAVES Summary Plot (Page 1) for 16-OCT-1997, DOY = 289

DAILY Tue Sep 23, 2008
 Re = 62.18 (61.89, 3.39, 4.84 GSE)



RAD2
 Antenna Ey
 Mode LIN(1)
 SUM/SEP SUM
 Toggle OFF

RAD1
 Antenna Ex
 Mode LIS(2,8)
 SUM/SEP SUM
 Toggle OFF

TNR
 Antenna ExEy
 Mode A-32
 Sweep ABCDE