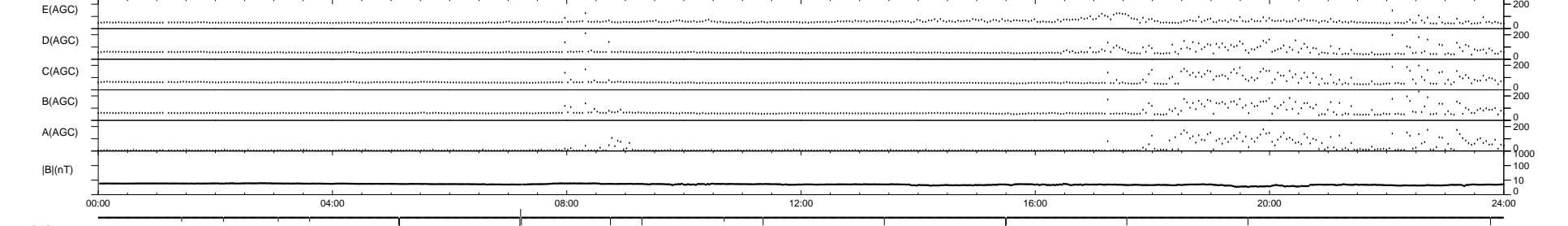
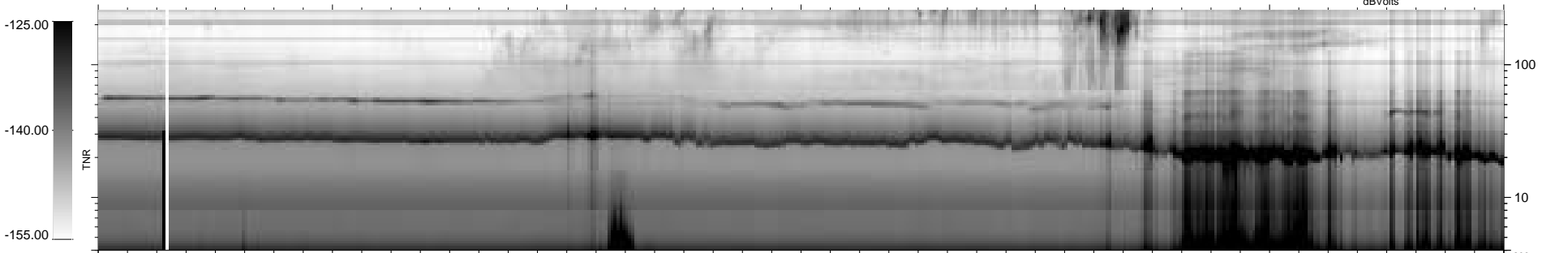
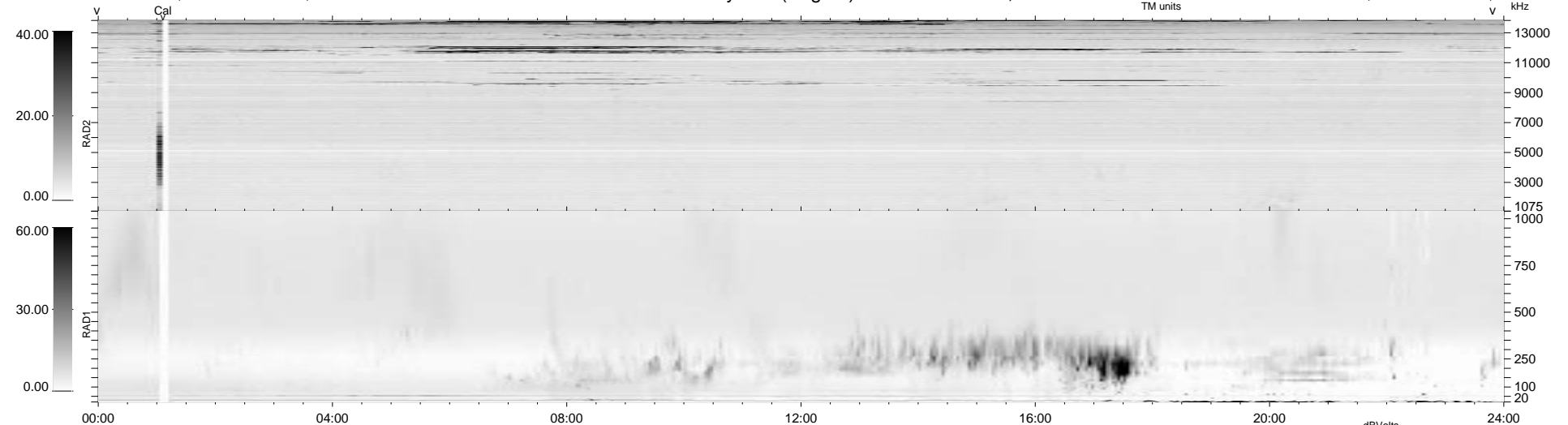


18 bad + 1859 good MF/1878MF projected (98%) - 1 missing MF
 Avg interval = 180 secs
 Re = 74.42 (73.56, -10.62, 3.70 GSE)

1.7d VMS-SunOS LZ version = v01

WIND/WAVES Summary Plot (Page 1) for 15-OCT-1997, DOY = 288

DAILY Tue Sep 23, 2008
 Re = 69.02 (68.78, -3.80, 4.35 GSE)



```

RAD2
Antenna Ey .....
Mode LIN(1) .....
SUM/SEP SUM .....
Toggle OFF .....

RAD1
Antenna Ex .....
Mode LIS(2,3) .....
SUM/SEP SUM .....
Toggle OFF .....

TNR
Antenna ExEy .....
Mode A-32 .....
Sweep ABCDE .....
  
```