

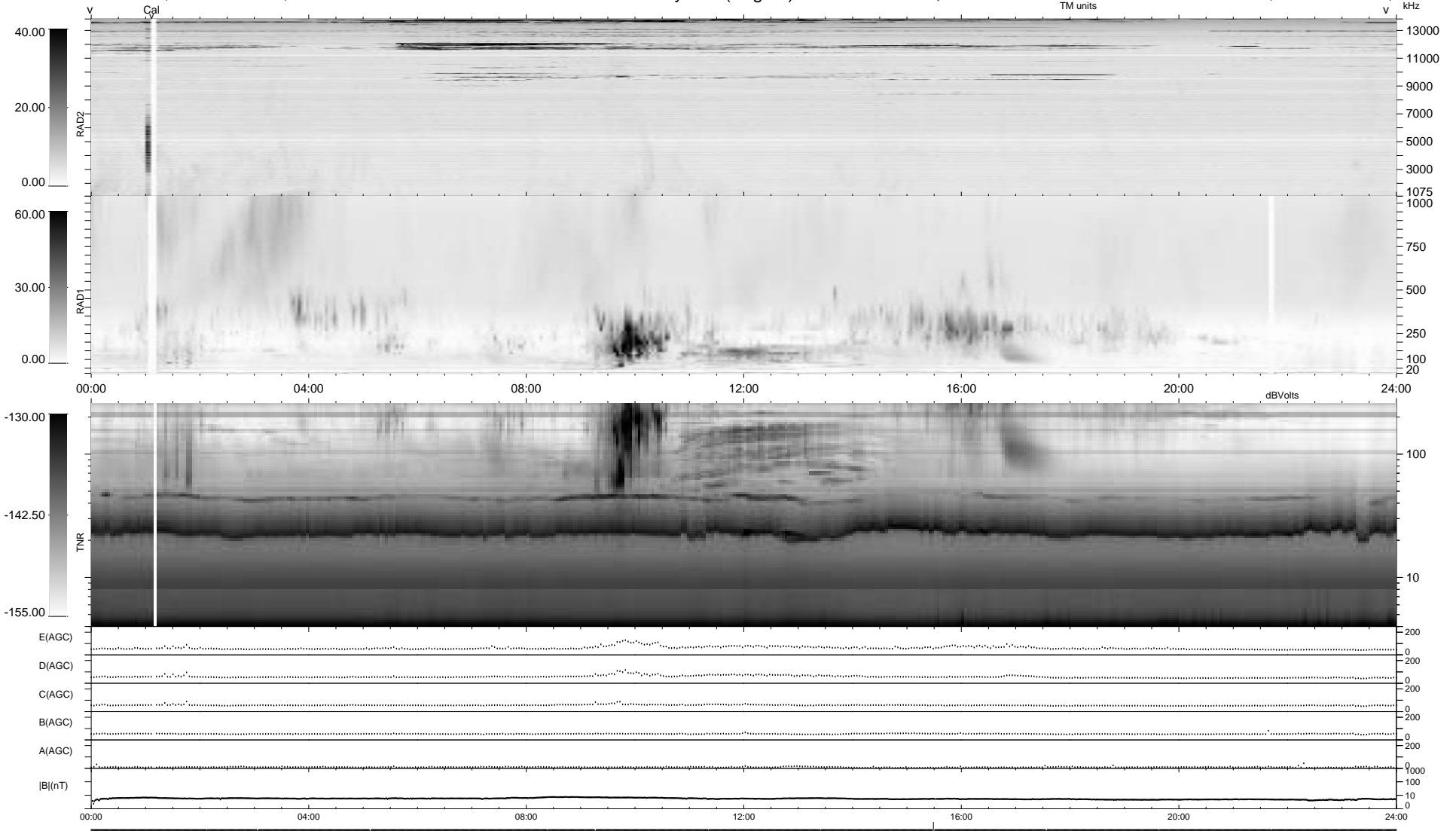
17 bad + 1861 good MF/1879MF projected (99%) - 1 missing MF
 Avg interval = 180 secs
 Re = 81.61 (78.25, -23.07, 2.13 GSE)

1.7d VMS-SunOS

LZ version = v01

WIND/WAVES Summary Plot (Page 1) for 13-OCT-1997, DOY = 286

DAILY Tue Sep 23, 2008
 Re = 78.62 (76.67, -17.12, 2.95 GSE)



RAD2
 Antenna Ey
 Mode LIN(1)
 SUM/SEP SUM
 Toggle OFF
 RAD1
 Antenna Ex
 Mode LIS(2,3)
 SUM/SEP SUM
 Toggle OFF
 TNR
 Antenna ExEy
 Mode A-32
 Sweep ABCDE