

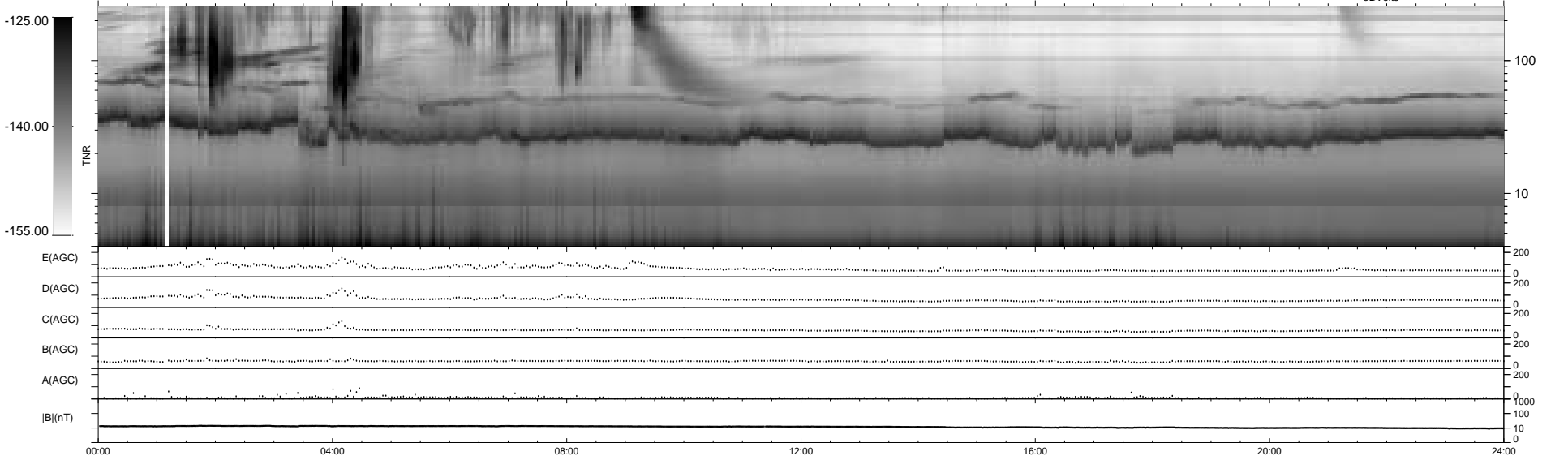
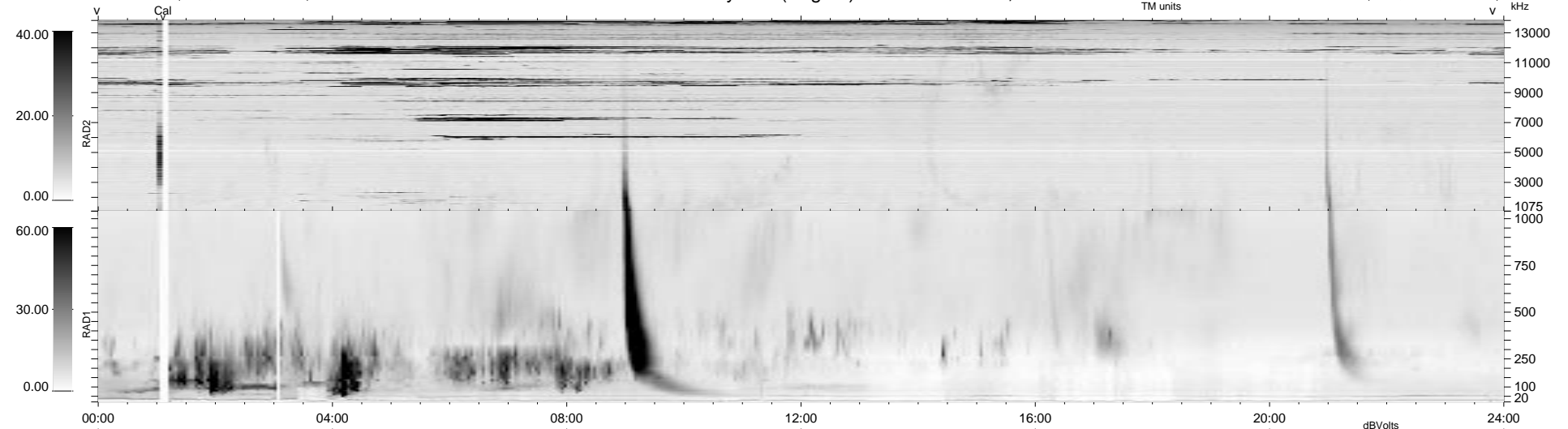
18 bad + 1860 good MF/1878MF projected (99%) - 0 missing MFs
 Avg interval = 180 secs
 Re = 84.39 (77.43, -33.56, 0.36 GSE)

1.7d VMS-SunOS

LZ version = v01

WIND/WAVES Summary Plot (Page 1) for 11-OCT-1997, DOY = 284

DAILY Tue Sep 23, 2008
 Re = 83.54 (78.48, -28.61, 1.25 GSE)



RAD2
 Antenna Ey
 Mode LIN(1)
 SUM/SEP SUM
 Toggle OFF
 RAD1
 Antenna Ex
 Mode LIS(2,3)
 SUM/SEP SUM
 Toggle OFF
 TNR
 Antenna ExEy
 Mode A-32
 Sweep ABCDE