

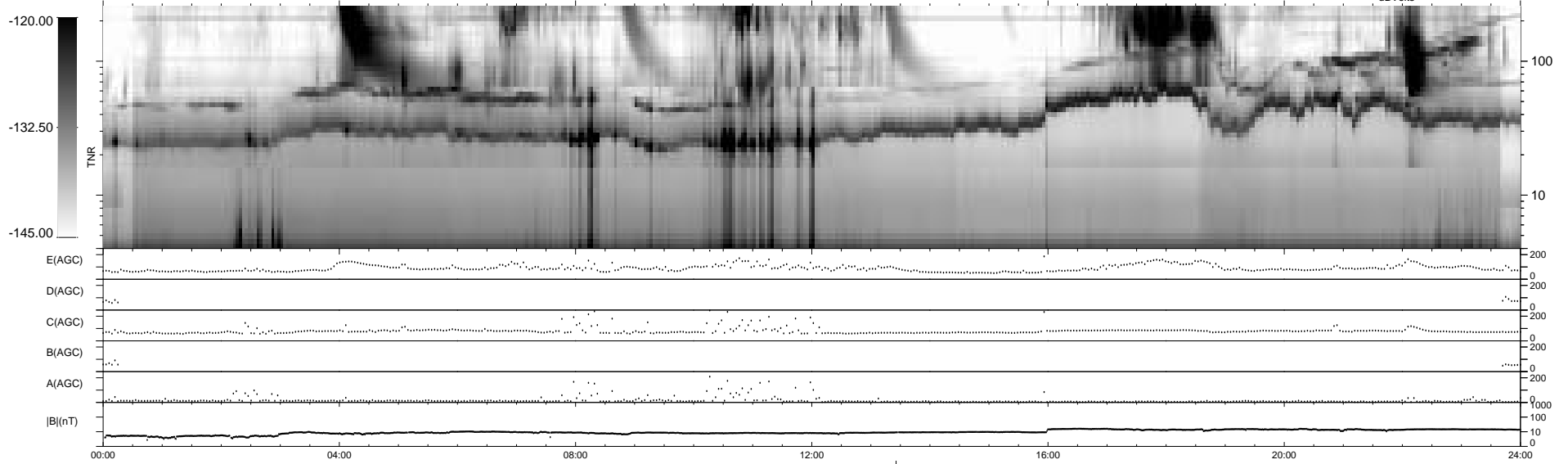
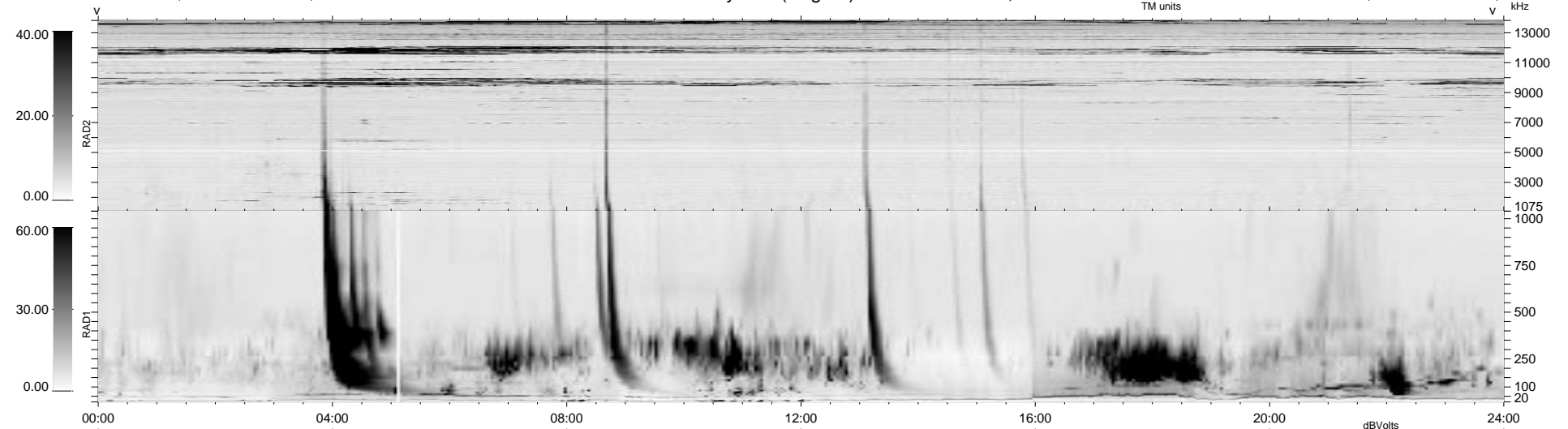
17 bad + 1860 good MF/1878MF projected (99%) - 1 missing MF
 Avg interval = 180 secs
 Re = 84.21 (75.14, -38.00, -0.55 GSE)

1.7d VMS-SunOS

LZ version = v01

WIND/WAVES Summary Plot (Page 1) for 10-OCT-1997, DOY = 283

DAILY Tue Sep 23, 2008
 Re = 84.40 (77.42, -33.59, 0.35 GSE)



RAD2
 Antenna Ey
 Mode LIN(1)
 SUM/SEP SUM
 Toggle OFF

RAD1
 Antenna Ex
 Mode LIS(2,3)
 SUM/SEP SUM
 Toggle OFF

TNR
 Antenna ExEy
 Mode A-32 A-16
 Sweep ABCDE ACE