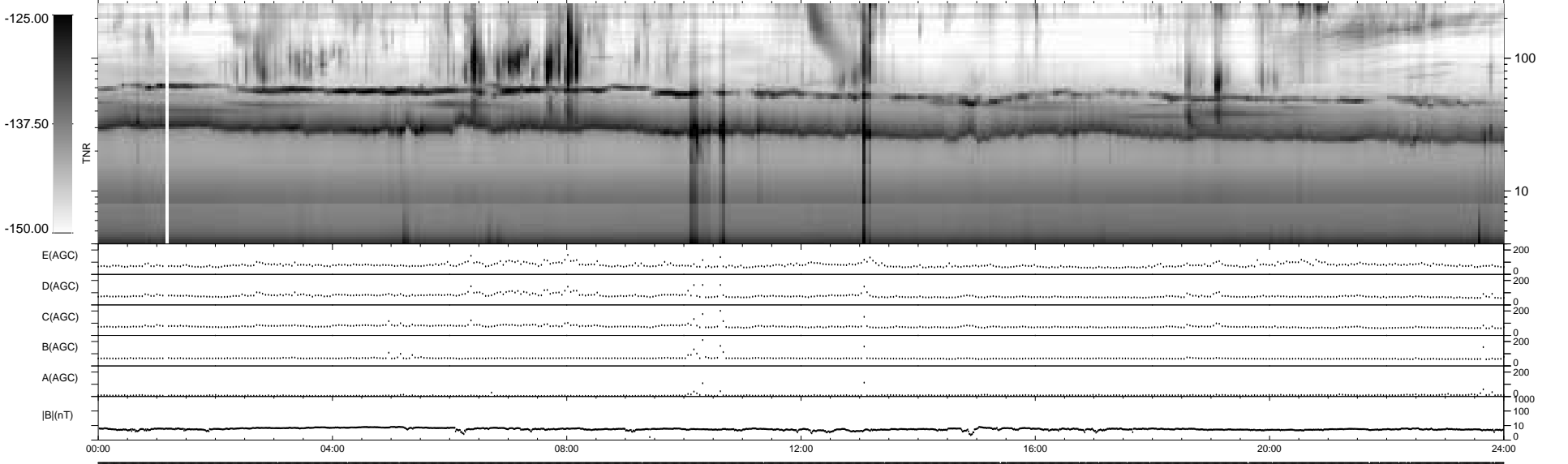
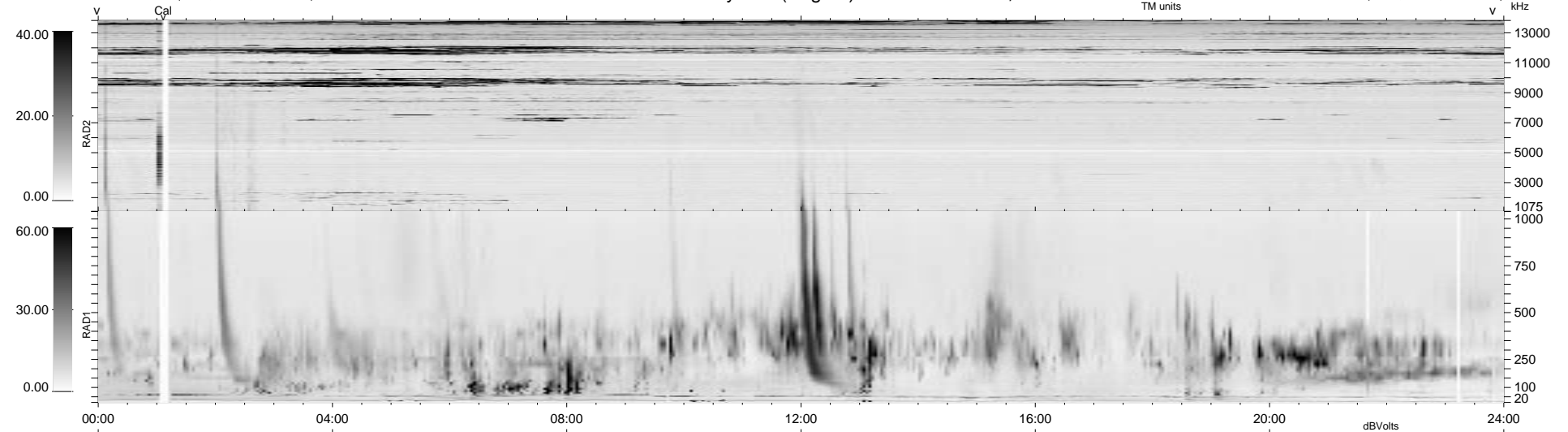


26 bad + 1853 good MF/1879MF projected (98%) - 0 missing MFs  
 Avg interval = 180 secs  
 Re = 82.95 (71.62, -41.83, -1.45 GSE)

1.7d VMS-SunOS LZ version = v01

WIND/WAVES Summary Plot (Page 1) for 09-OCT-1997, DOY = 282

DAILY Tue Sep 23, 2008  
 Re = 84.20 (75.12, -38.02, -0.56 GSE)



```

RAD2
Antenna Ey .....
Mode LIN(1) .....
SUM/SEP SUM .....
Toggle OFF .....

RAD1
Antenna Ex .....
Mode LIS(2,3) .....
SUM/SEP SUM .....
Toggle OFF .....

TNR
Antenna ExEy .....
Mode A-32 .....
Sweep ABCDE .....
  
```