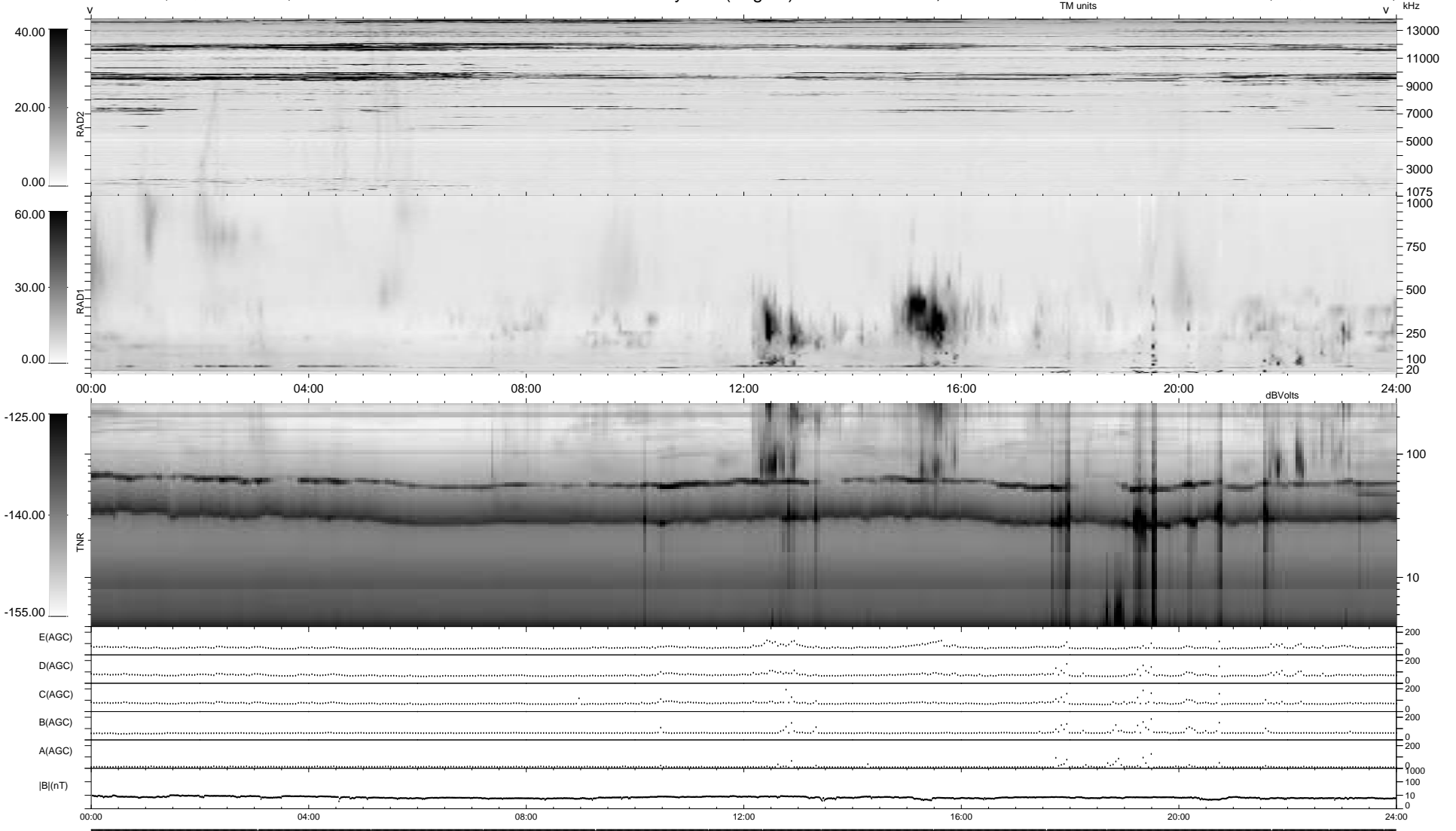


18 bad + 1860 good MF/1878MF projected (99%) - 0 missing MFs
 Avg interval = 180 secs
 Re = 80.60 (66.82, -45.01, -2.33 GSE)

1.7d VMS-SunOS LZ version = v01
 DAILY Tue Sep 23, 2008
 Re = 82.94 (71.59, -41.86, -1.46 GSE)

WIND/WAVES Summary Plot (Page 1) for 08-OCT-1997, DOY = 281



```

RAD2
Antenna Ey .....
Mode LIN(1) .....
SUM/SEP SUM .....
Toggle OFF .....
RAD1
Antenna Ex .....
Mode LIS(2,3) .....
SUM/SEP SUM .....
Toggle OFF .....
TNR
Antenna ExEy .....
Mode A-32 .....
Sweep ABCDE .....
  
```