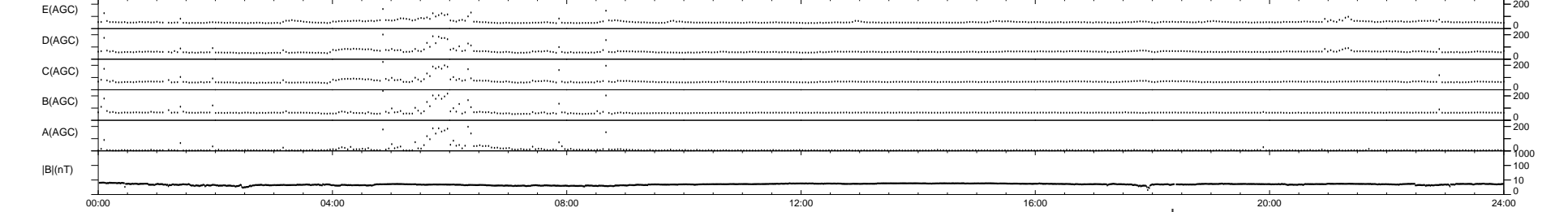
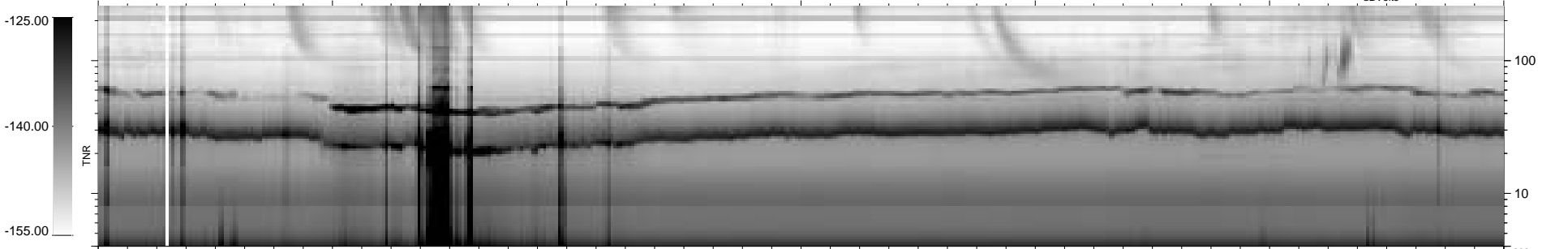
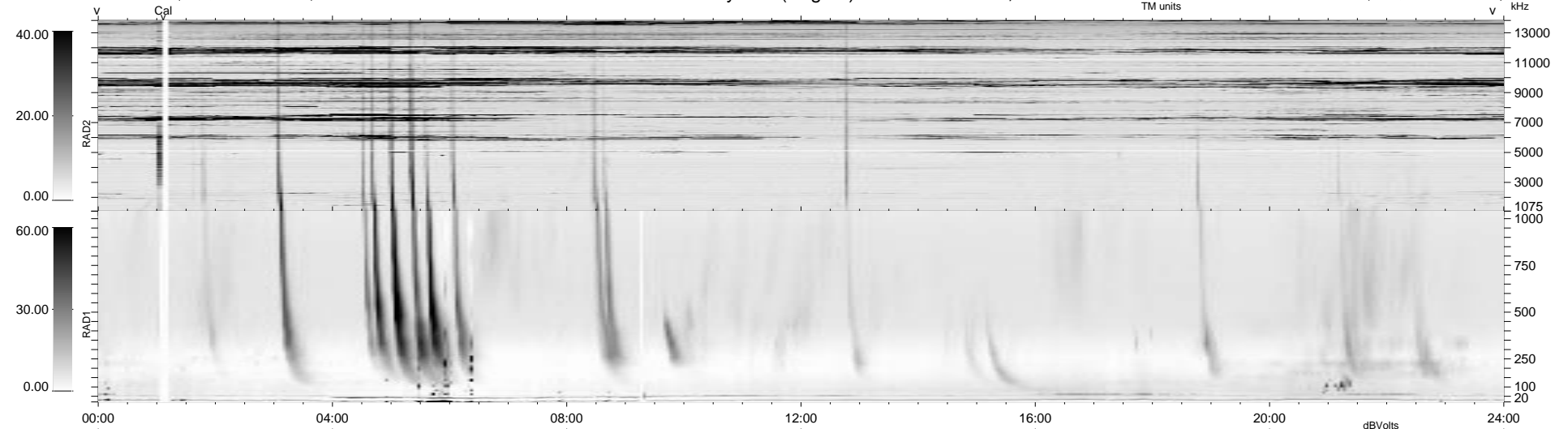


23 bad + 1854 good MF/1879MF projected (98%) - 2 missing MFs
 Avg interval = 180 secs
 Re = 66.13 (44.05, -49.11, -4.52 GSE)

1.7d VMS-SunOS LZ version = v01
 DAILY Tue Sep 23, 2008
 Re = 72.27 (53.10, -48.86, -3.90 GSE)

WIND/WAVES Summary Plot (Page 1) for 05-OCT-1997, DOY = 278



```

RAD2
Antenna Ey
Mode LIN(1)
SUM/SEP SUM
Toggle OFF

RAD1
Antenna Ex
Mode LIS(2,3)
SUM/SEP SUM
Toggle OFF

TNR
Antenna ExEy
Mode A-32
Sweep ABCDE
  
```