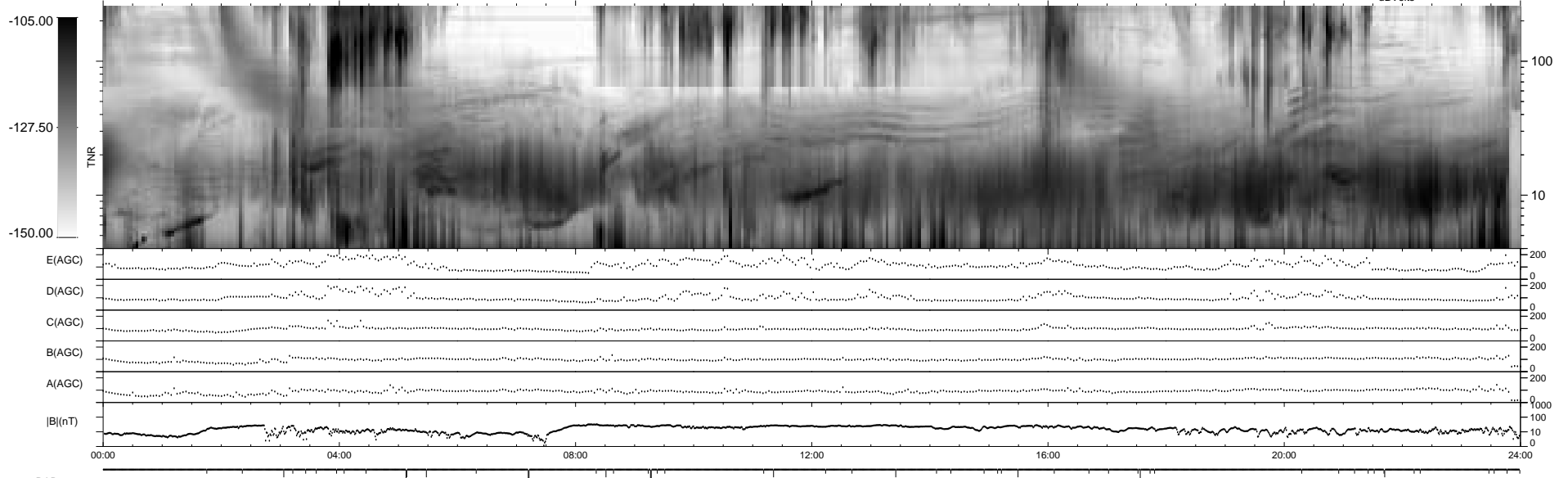
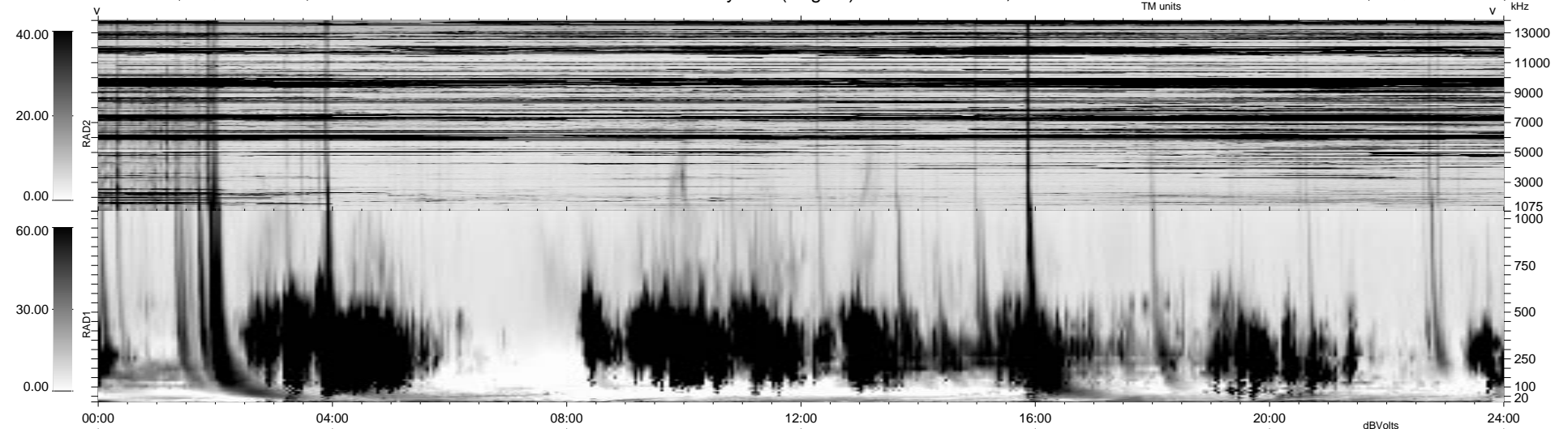


54 bad + 1824 good MF/1878MF projected (97%) - 0 missing MFs  
 Avg interval = 180 secs  
 Re = -16.28 (-12.06, 10.87, 1.07 GSE)

1.7d VMS-SunOS LZ version = v01  
 DAILY Tue Sep 23, 2008  
 Re = 22.63 (-10.78, -19.66, -3.11 GSE)

WIND/WAVES Summary Plot (Page 1) for 30-SEP-1997, DOY = 273



RAD2  
 Antenna Ey  
 Mode LIN(1)  
 SUM/SEP SUM  
 Toggle OFF

RAD1  
 Antenna Ex  
 Mode LIS(2,3)  
 SUM/SEP SUM  
 Toggle OFF

TNR  
 Antenna ExEy  
 Mode A-32  
 Sweep ABCDE