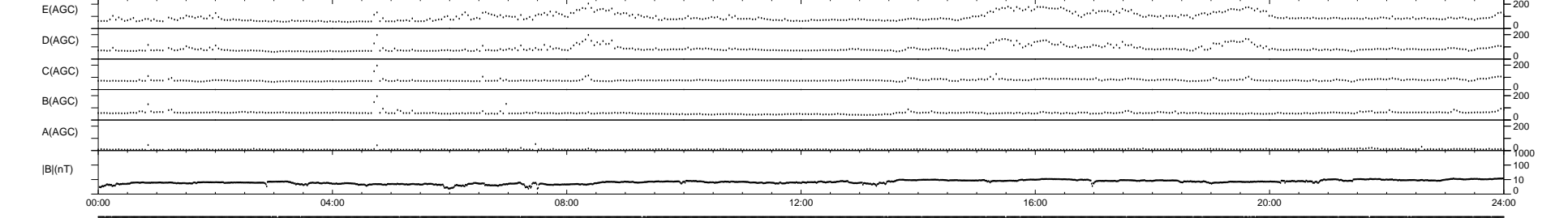
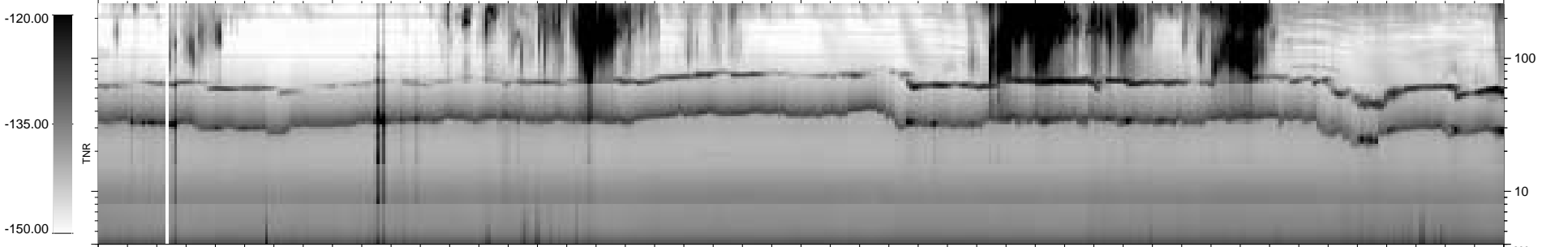
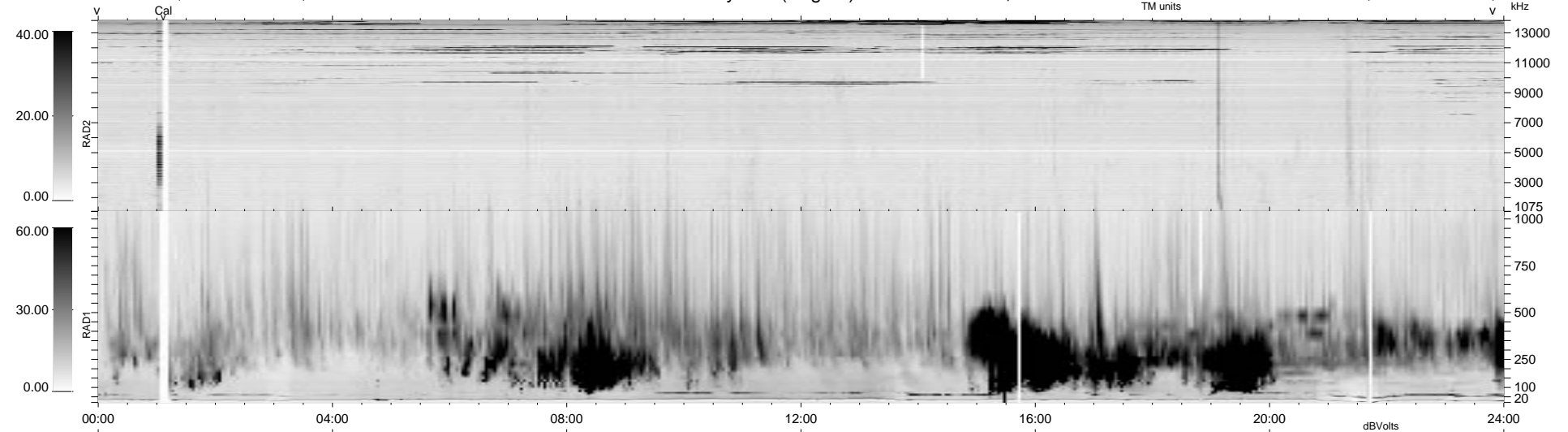


34 bad + 1845 good MF/1879MF projected (98%) - 0 missing MFs
 Avg interval = 180 secs
 Re = 53.25 (45.35, 27.44, 5.11 GSE)

1.7d VMS-SunOS LZ version = v01

WIND/WAVES Summary Plot (Page 1) for 27-SEP-1997, DOY = 270

DAILY Tue Sep 23, 2008
 Re = 42.43 (30.34, 29.24, 5.00 GSE)



```

RAD2
Antenna Ey .....
Mode LIN(1) .....
SUM/SEP SUM .....
Toggle OFF .....

RAD1
Antenna Ex .....
Mode LIS(2,3) .....
SUM/SEP SUM .....
Toggle OFF .....

TNR
Antenna ExEy .....
Mode A-32 .....
Sweep ABCDE .....
  
```