

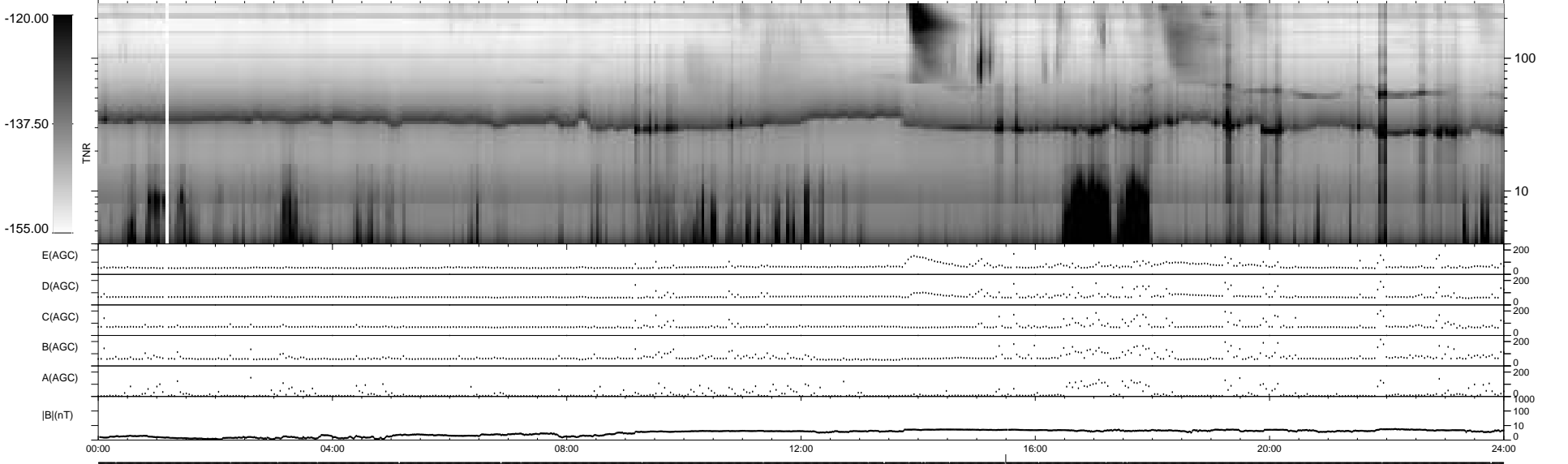
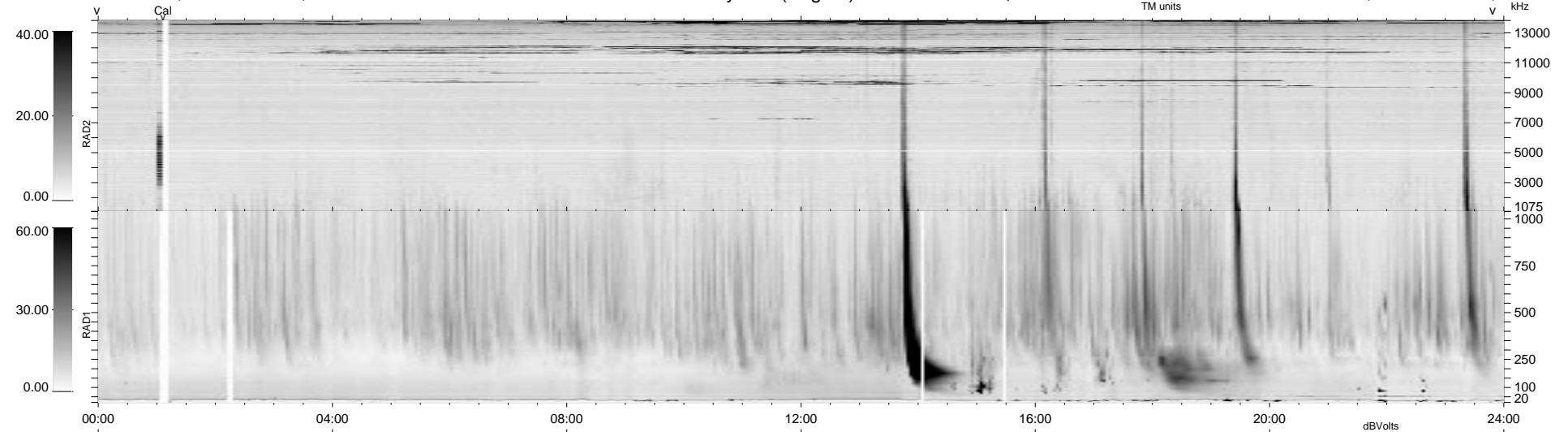
26 bad + 1851 good MF/1878MF projected (98%) - 1 missing MF
 Avg interval = 180 secs
 Re = 69.23 (66.26, 19.58, 4.30 GSE)

1.7d VMS-SunOS

LZ version = v01

WIND/WAVES Summary Plot (Page 1) for 25-SEP-1997, DOY = 268

DAILY Tue Sep 23, 2008
 Re = 62.15 (57.17, 23.89, 4.82 GSE)



RAD2
 Antenna Ey
 Mode LIN(1)
 SUM/SEP SUM
 Toggle OFF
 RAD1
 Antenna Ex
 Mode LIS(2,3)
 SUM/SEP SUM
 Toggle OFF
 TNR
 Antenna ExEy
 Mode A-32
 Sweep ABCDE