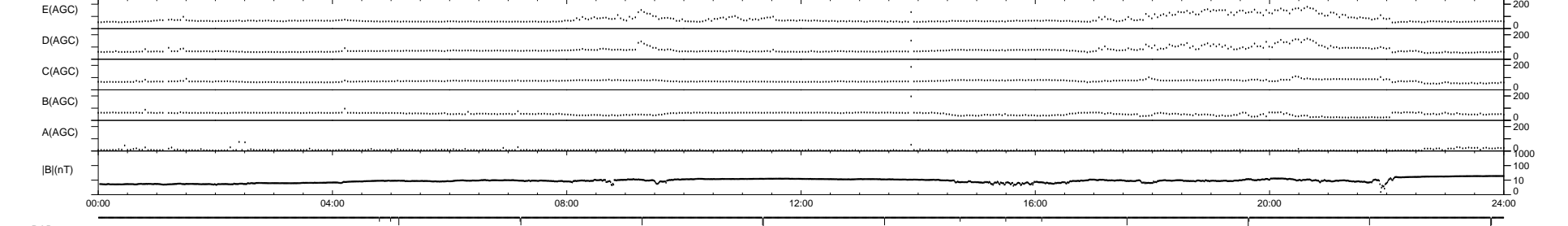
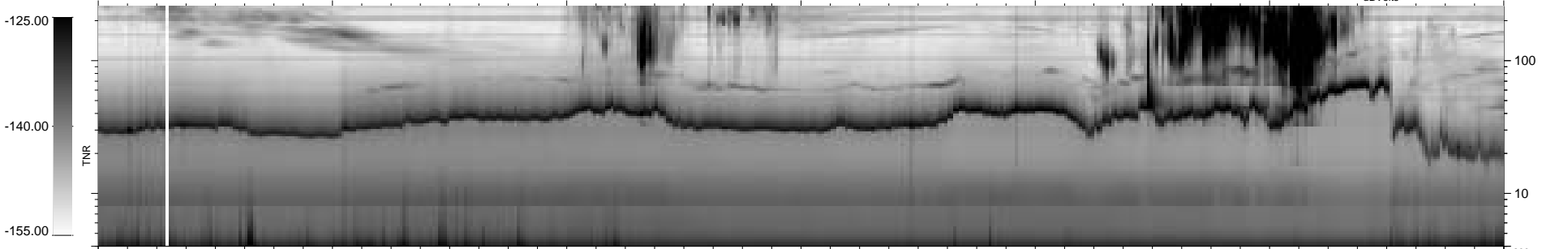
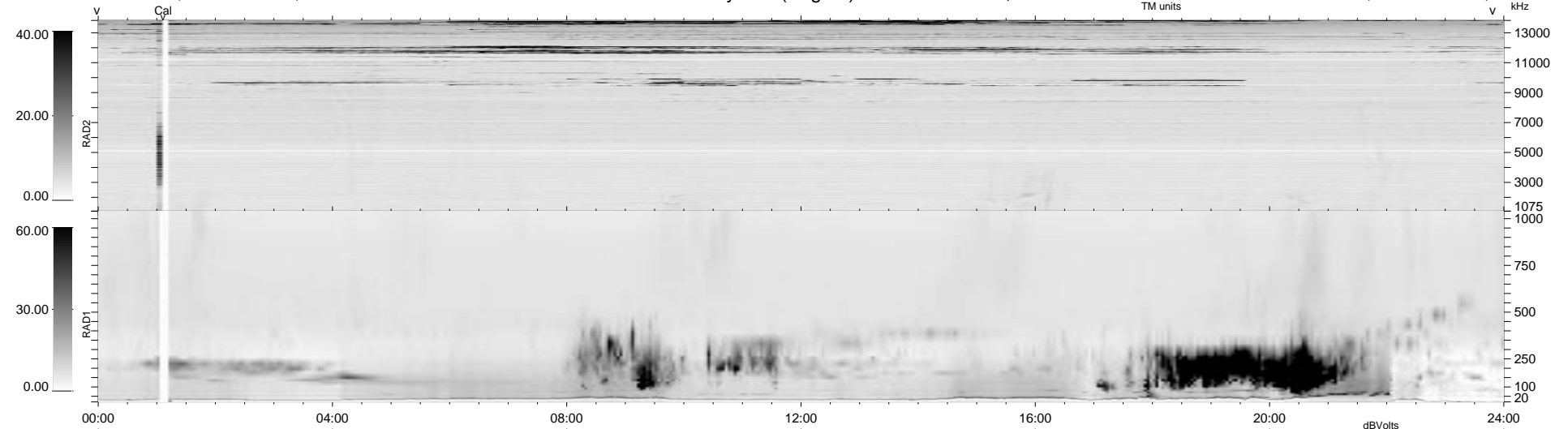


18 bad + 1860 good MF/1878MF projected (99%) - 0 missing MFs
 Avg interval = 180 secs
 Re = 84.50 (84.49, 0.03, 1.13 GSE)

1.7d VMS-SunOS LZ version = v01

WIND/WAVES Summary Plot (Page 1) for 21-SEP-1997, DOY = 264

DAILY Tue Sep 23, 2008
 Re = 82.45 (82.28, 4.93, 2.00 GSE)



RAD2
 Antenna Ey
 Mode LIN(1)
 SUM/SEP SUM
 Toggle OFF
 RAD1
 Antenna Ex
 Mode LIS(2,3)
 SUM/SEP SUM
 Toggle OFF
 TNR
 Antenna ExEy
 Mode A-32
 Sweep ABCDE