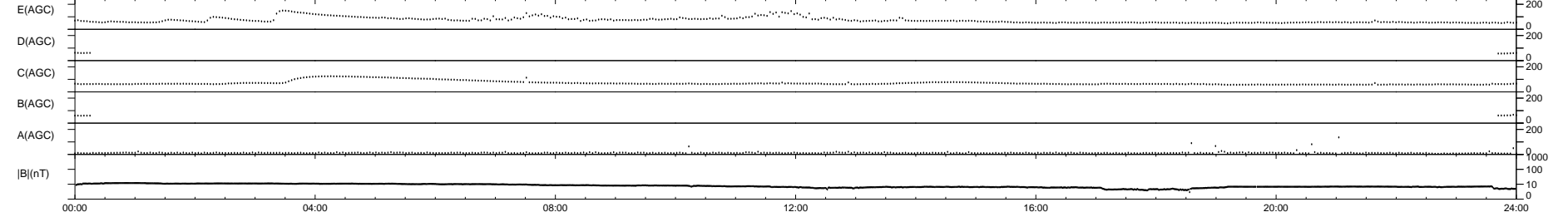
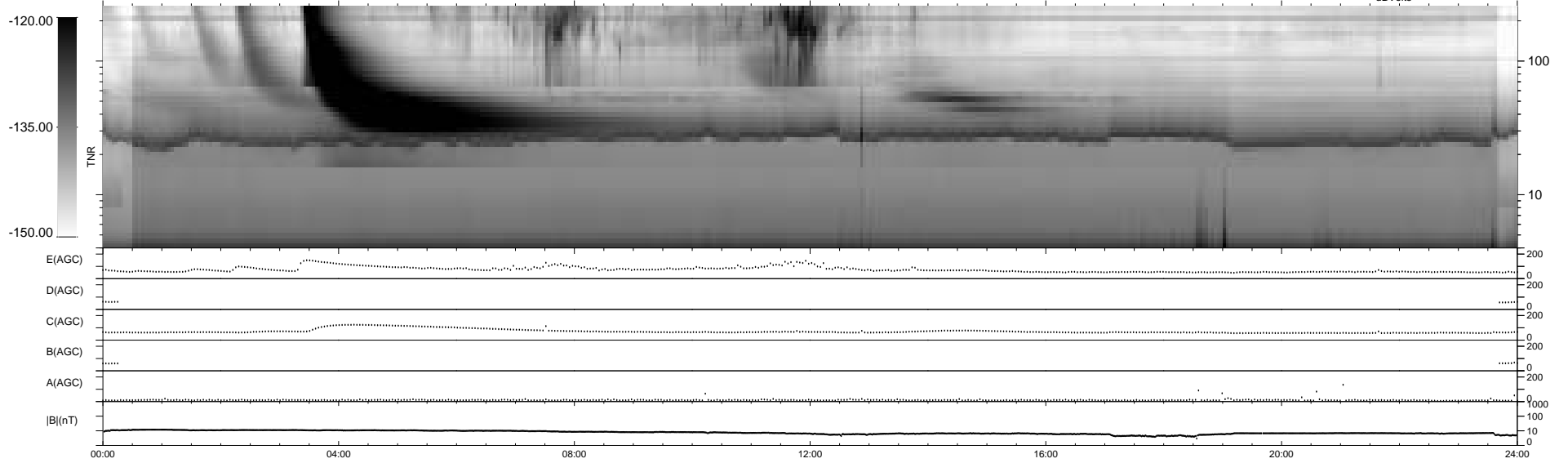
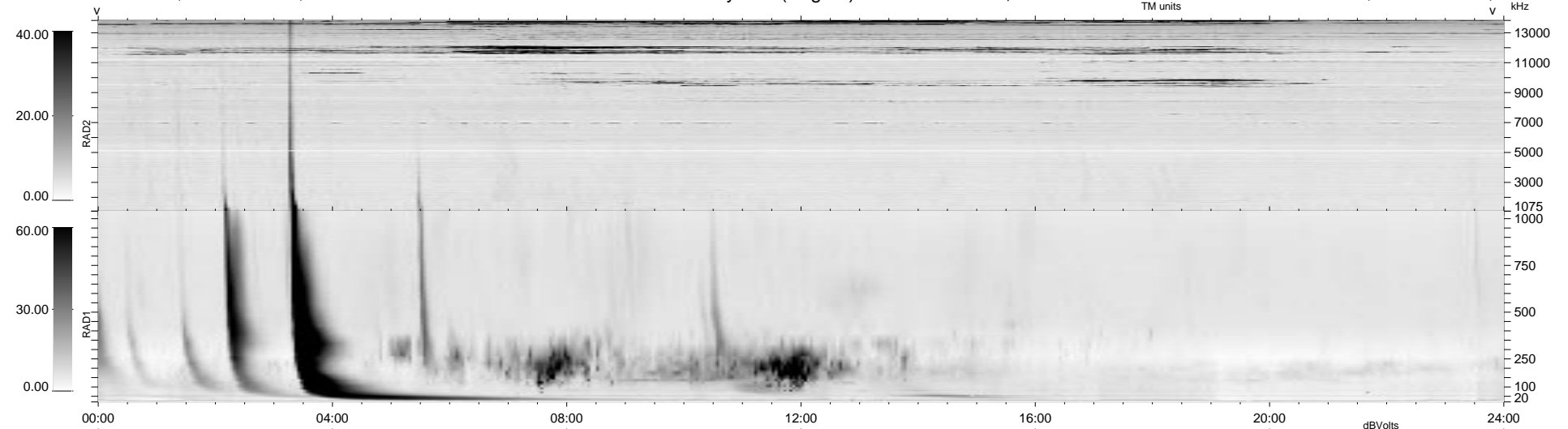


25 bad + 1854 good MF/1879MF projected (98%) - 0 missing MFs
 Avg interval = 180 secs
 Re = 85.51 (85.38, -4.82, 0.23 GSE)

1.7d VMS-SunOS LZ version = v01

WIND/WAVES Summary Plot (Page 1) for 20-SEP-1997, DOY = 263

DAILY Tue Sep 23, 2008
 Re = 84.51 (84.51, -0.00, 1.12 GSE)



RAD2 Antenna Ey
 Mode LIN(1)
 SUM/SEP SUM
 Toggle OFF

RAD1 Antenna Ex
 Mode LIS(2,3)
 SUM/SEP SUM
 Toggle OFF

TNR Antenna ExEy
 Mode A-32 A-16
 Sweep ABCDE ACE

Right Y-axis labels: A-32, A-32, ABCDE