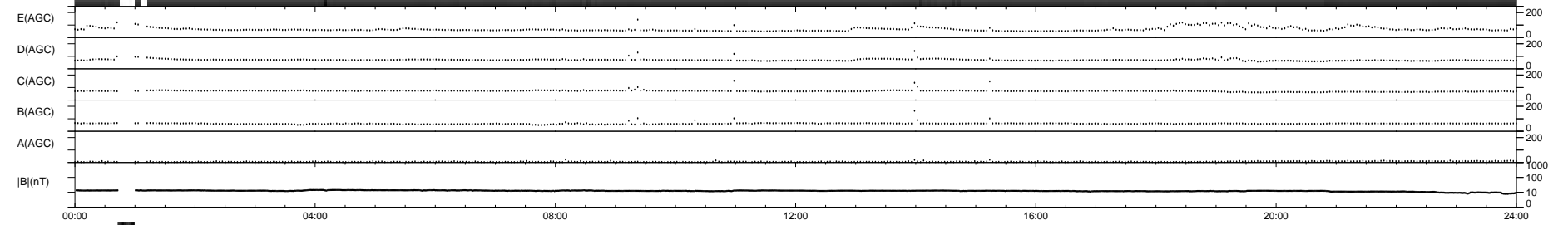
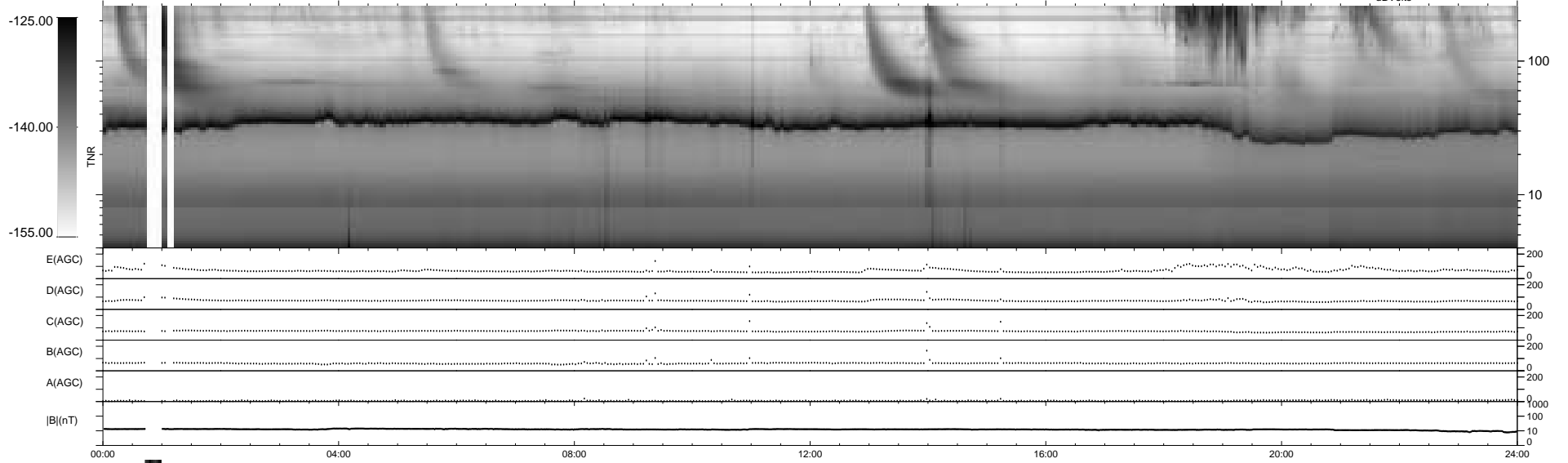
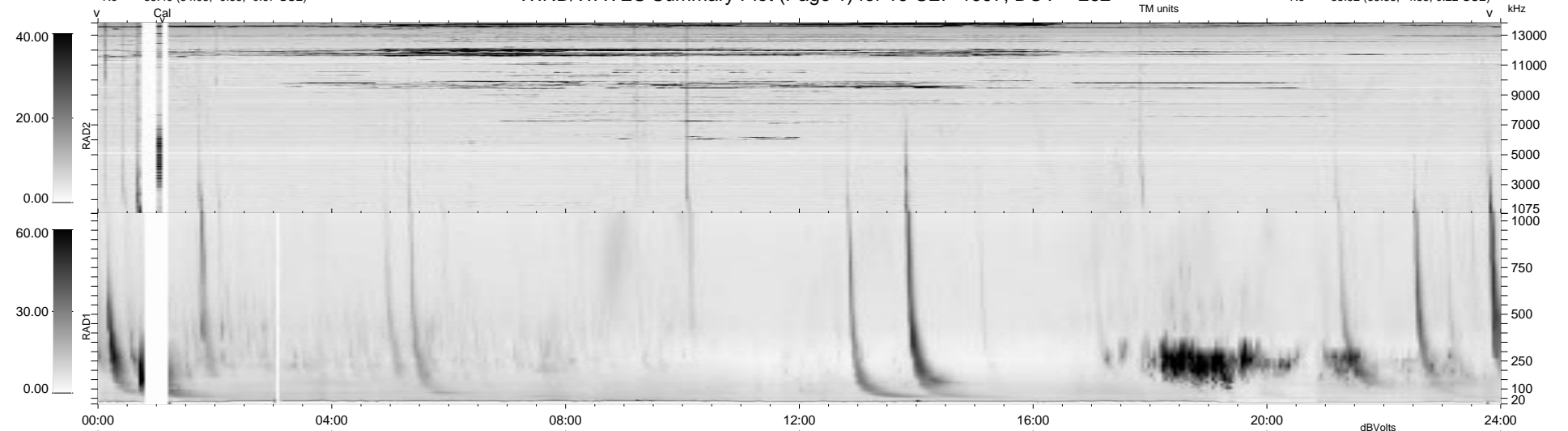


20 bad + 1836 good MF/1878MF projected (97%) - 22 missing MFs
 Avg interval = 180 secs
 Re = 85.49 (84.95, -9.55, -0.67 GSE)

1.7d VMS-SunOS LZ version = v01

WIND/WAVES Summary Plot (Page 1) for 19-SEP-1997, DOY = 262

DAILY Tue Sep 23, 2008
 Re = 85.52 (85.38, -4.85, 0.22 GSE)



```

RAD2
Antenna Ey .....
Mode LIN(1) .....
SUM/SEP SUM .....
Toggle OFF .....

RAD1
Antenna Ex .....
Mode LIS(2,3) .....
SUM/SEP SUM .....
Toggle OFF .....

TNR
Antenna ExEy .....
Mode A-32 .....
Sweep ABCDE .....
  
```