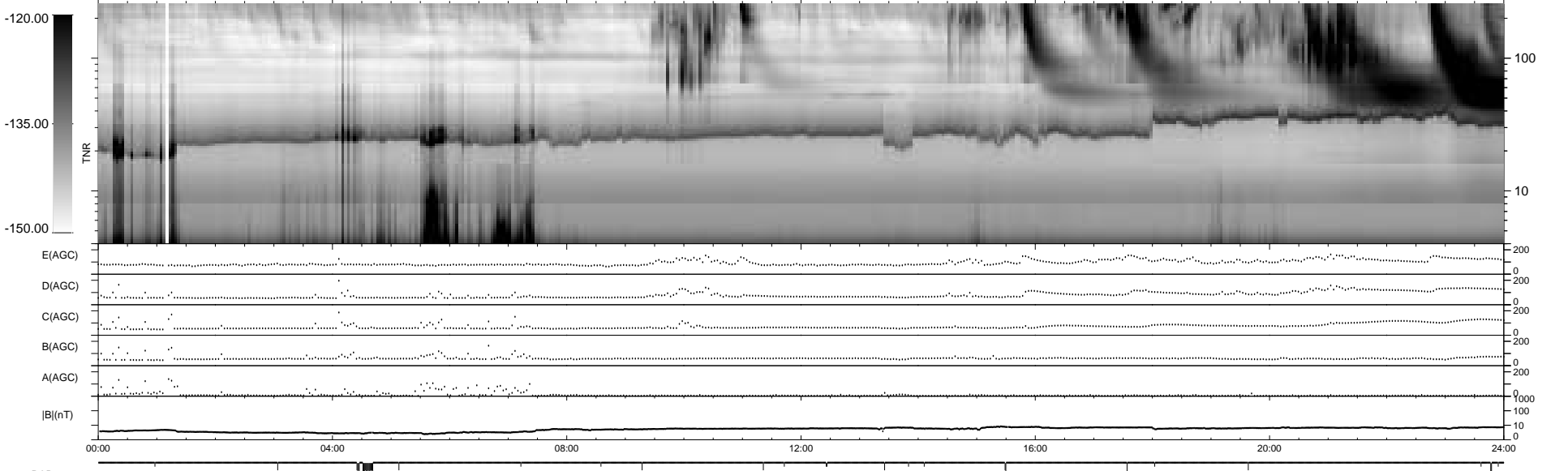
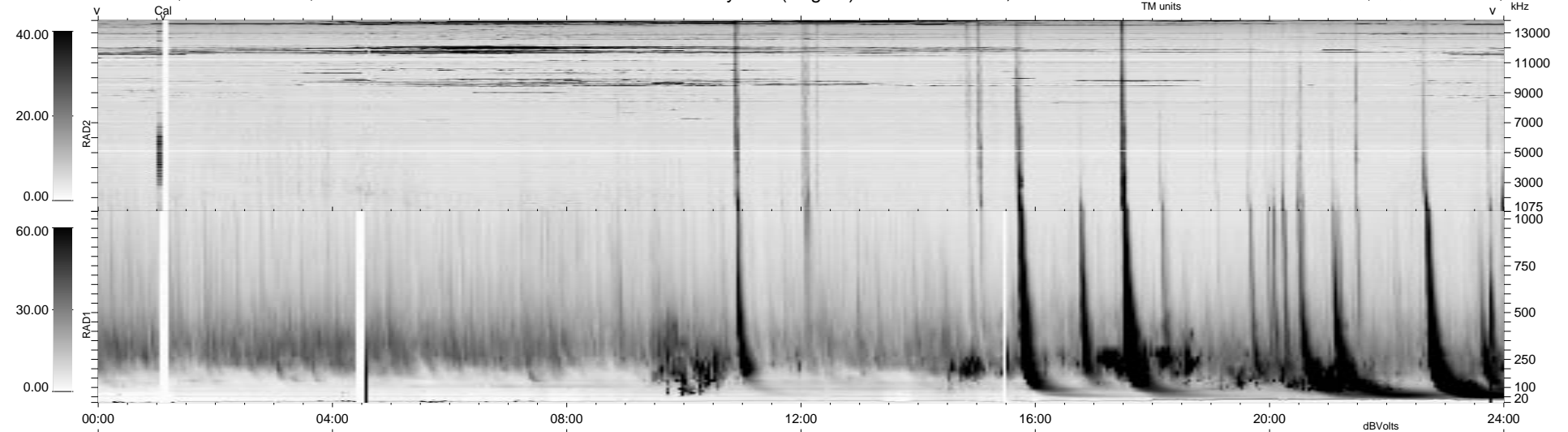


40 bad + 1838 good MF/1878MF projected (97%) - 0 missing MFs  
 Avg interval = 180 secs  
 Re = 82.32 (80.18, -18.49, -2.41 GSE)

1.7d VMS-SunOS LZ version = v01

WIND/WAVES Summary Plot (Page 1) for 17-SEP-1997, DOY = 260

DAILY Tue Sep 23, 2008  
 Re = 84.42 (83.21, -14.15, -1.56 GSE)



RAD2  
 Antenna Ey .....  
 Mode LIN(1) .....  
 SUM/SEP SUM .....  
 Toggle OFF .....  
 RAD1  
 Antenna Ex .....  
 Mode LIS(2,3) .....  
 SUM/SEP SUM .....  
 Toggle OFF .....  
 TNR  
 Antenna ExEy .....  
 Mode A-32 .....  
 Sweep ABCDE .....