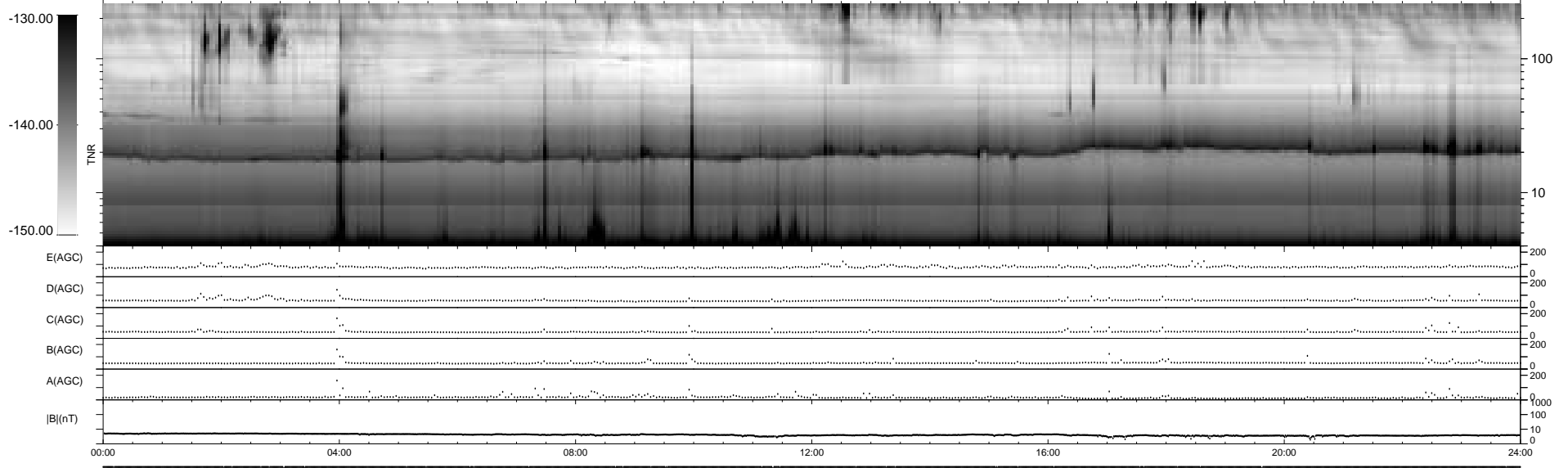
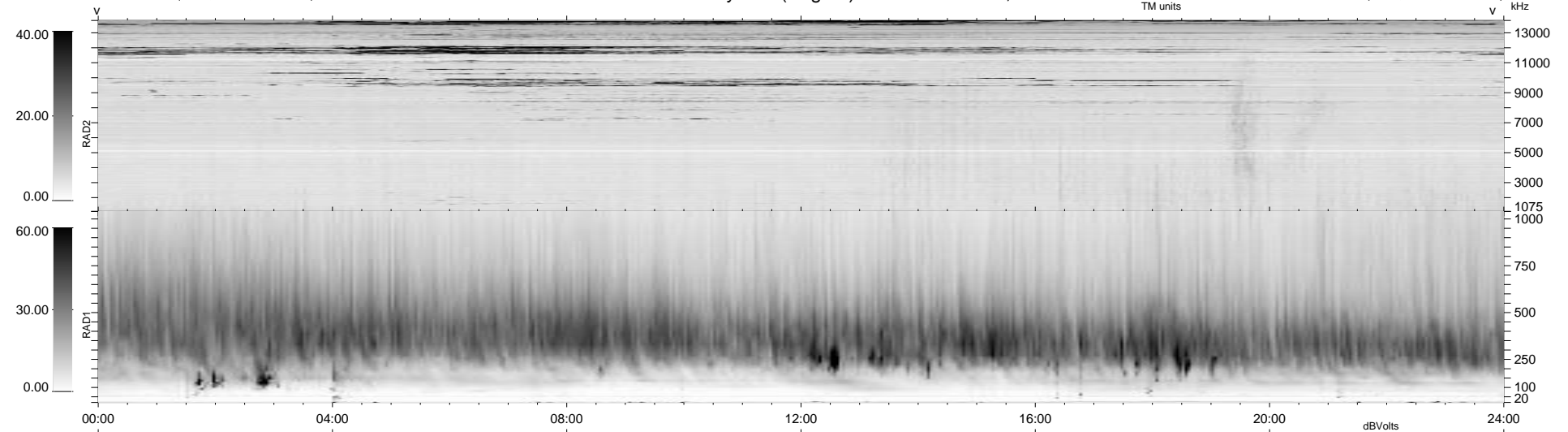


36 bad + 1843 good MF/1879MF projected (98%) - 0 missing MFs  
 Avg interval = 180 secs  
 Re = 79.09 (75.72, -22.60, -3.21 GSE)

1.7d VMS-SunOS LZ version = v01  
 DAILY Tue Sep 23, 2008  
 Re = 82.30 (80.15, -18.52, -2.41 GSE)

### WIND/WAVES Summary Plot (Page 1) for 16-SEP-1997, DOY = 259



RAD2  
 Antenna Ey  
 Mode LIN(1)  
 SUM/SEP SUM  
 Toggle OFF

RAD1  
 Antenna Ex  
 Mode LIS(2,3)  
 SUM/SEP SUM  
 Toggle OFF

TNR  
 Antenna ExEy  
 Mode A-32  
 Sweep ABCDE