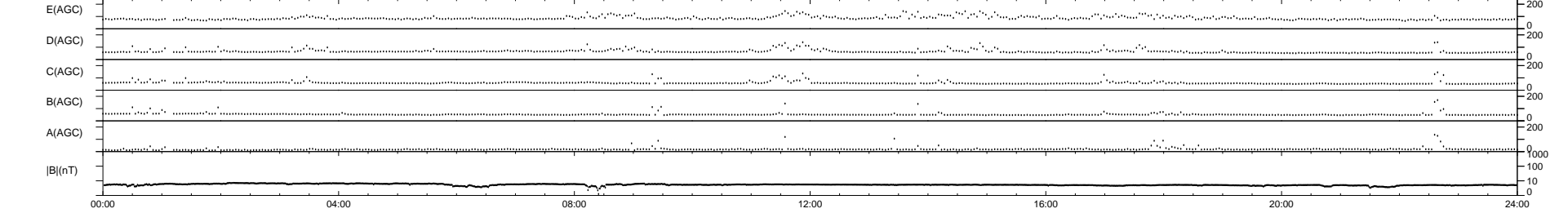
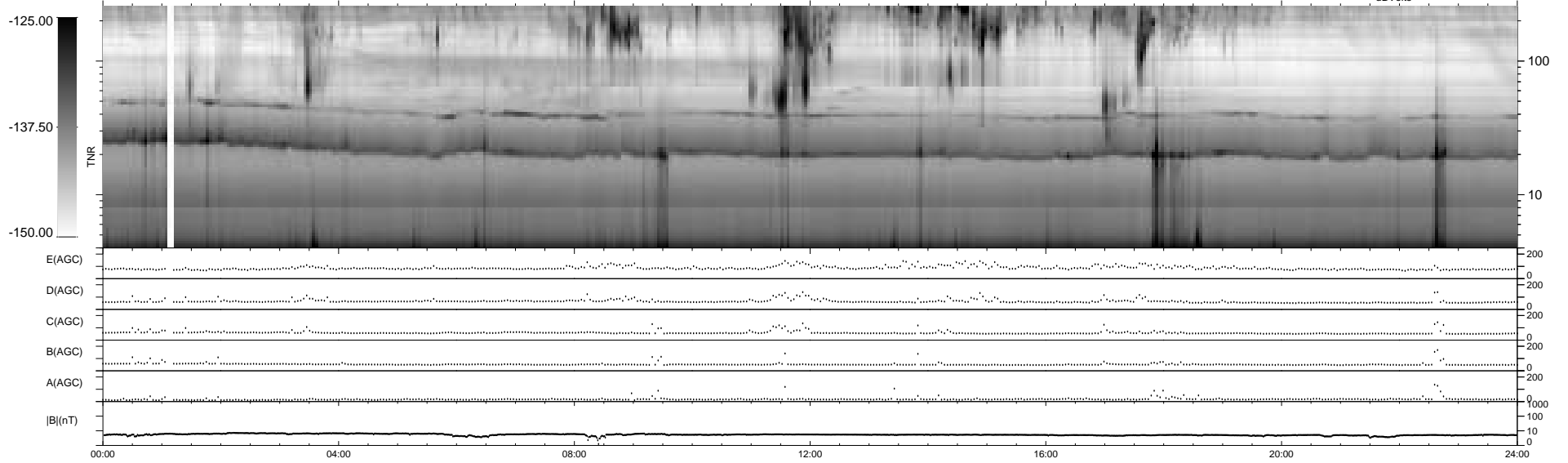
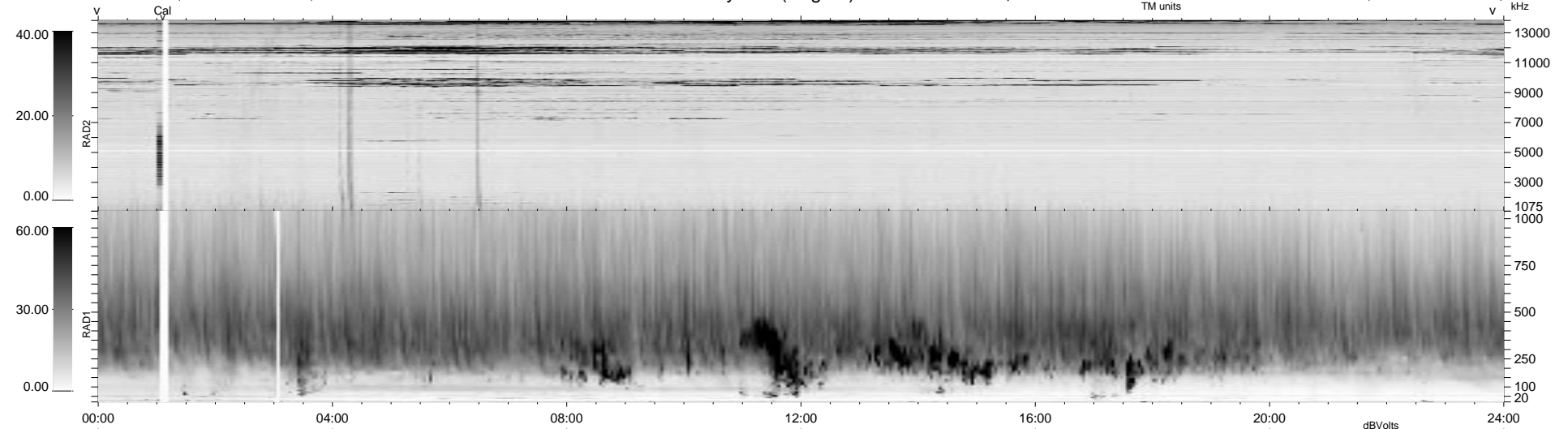


21 bad + 1857 good MF/1878MF projected (98%) - 0 missing MFs  
 Avg interval = 180 secs  
 Re = 74.67 (69.75, -26.37, -3.94 GSE)

1.7d VMS-SunOS LZ version = v01

### WIND/WAVES Summary Plot (Page 1) for 15-SEP-1997, DOY = 258

DAILY Tue Sep 23, 2008  
 Re = 79.06 (75.69, -22.63, -3.22 GSE)



```

RAD2
Antenna Ey
Mode LIN(1)
SUM/SEP SUM
Toggle OFF

RAD1
Antenna Ex
Mode LIS(2,4)
SUM/SEP SUM
Toggle OFF

TNR
Antenna ExEy
Mode A-32
Sweep ABCDE
  
```