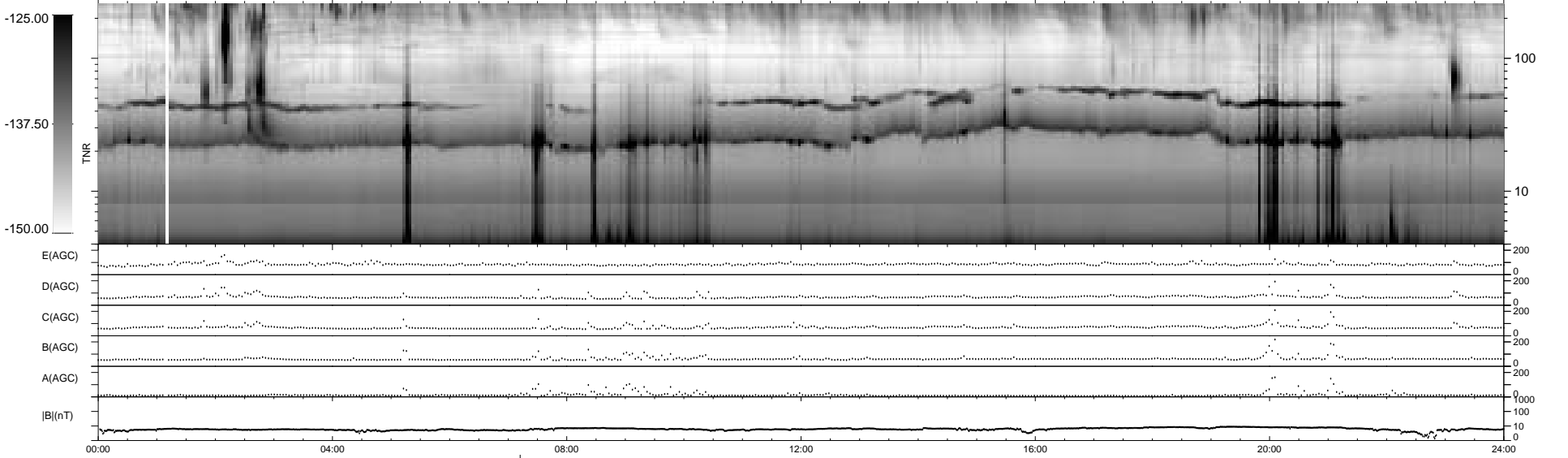
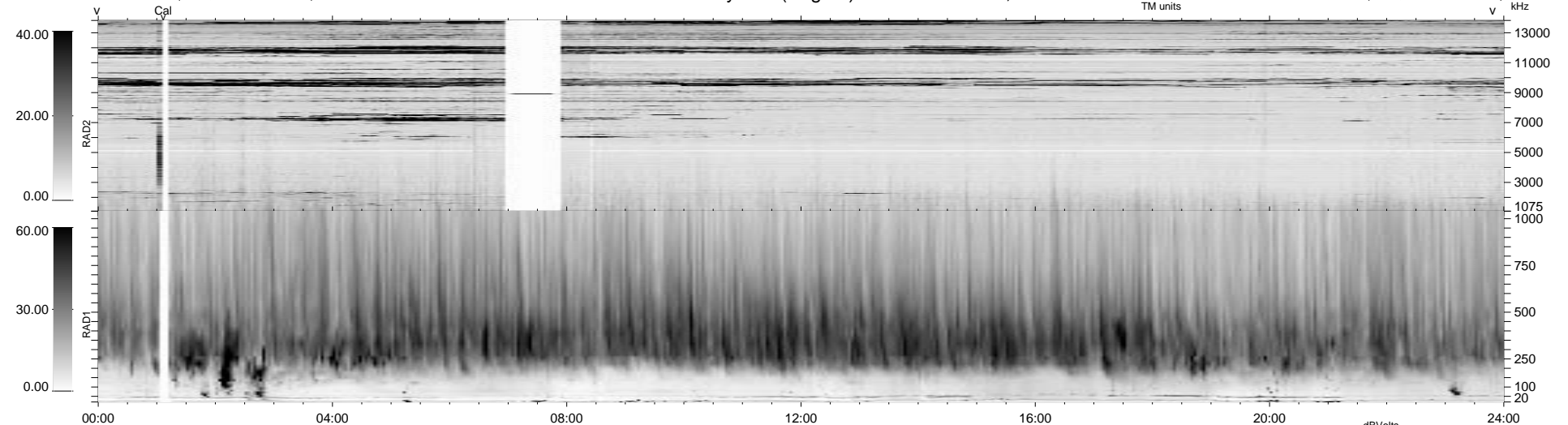


23 bad + 1854 good MF/1878MF projected (98%) - 1 missing MF
 Avg interval = 180 secs
 Re = 61.66 (52.35, -32.19, -5.01 GSE)

1.7d VMS-SunOS LZ version = v01
 DAILY Tue Sep 23, 2008
 Re = 68.88 (61.99, -29.67, -4.56 GSE)

WIND/WAVES Summary Plot (Page 1) for 13-SEP-1997, DOY = 256



```

RAD2
Antenna Ey .....
Mode LIN(1) .....
SUM/SEP SUM ..... SEP ..... FIX(15Z) ..... LIN(1) ..... SUM .....
Toggle OFF .....

RAD1
Antenna Ex .....
Mode LIS(2,3) .....
SUM/SEP SUM .....
Toggle OFF .....

TNR
Antenna ExEy .....
Mode A-32 .....
Sweep ABCDE .....
  
```