

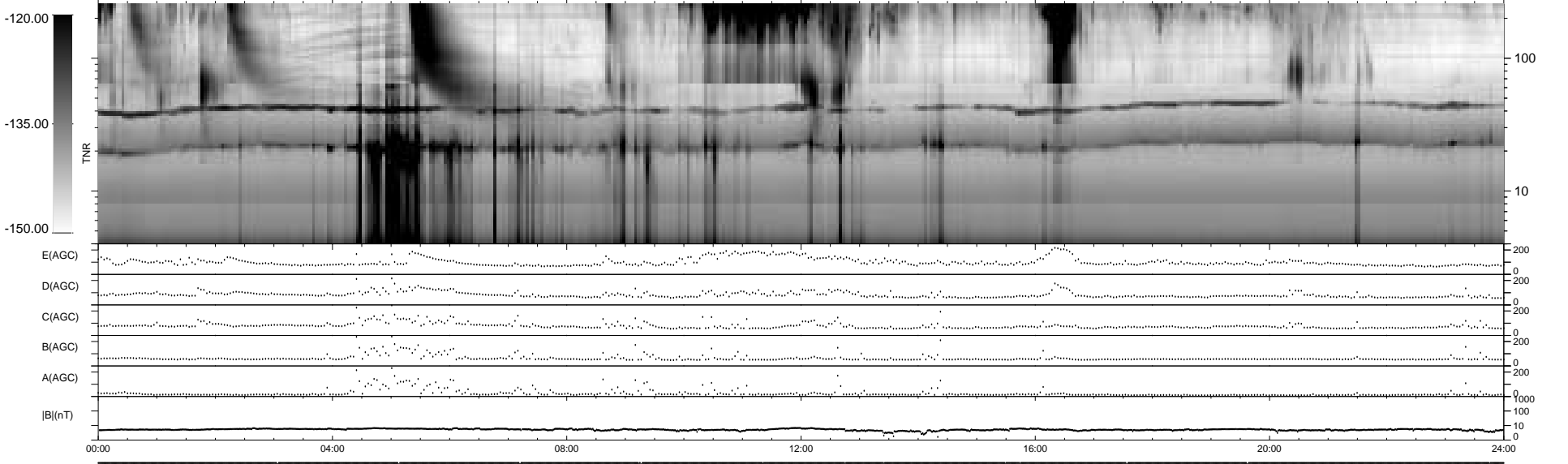
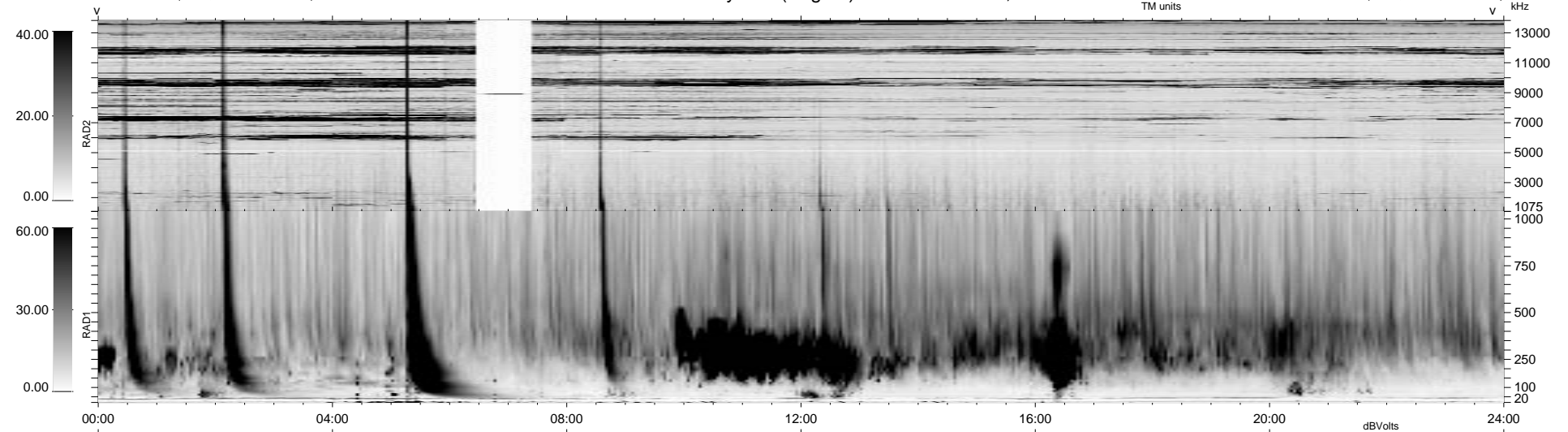
19 bad + 1860 good MF/1879MF projected (98%) - 0 missing MFs
 Avg interval = 180 secs
 Re = 52.60 (40.21, -33.51, -5.21 GSE)

1.7d VMS-SunOS

LZ version = v01

WIND/WAVES Summary Plot (Page 1) for 12-SEP-1997, DOY = 255

DAILY Tue Sep 23, 2008
 Re = 61.61 (52.28, -32.20, -5.01 GSE)



E(AGC) 0 200
 D(AGC) 0 200
 C(AGC) 0 200
 B(AGC) 0 200
 A(AGC) 0 200
 |B|(nT) 0 1000
 0 10
 0

```

RAD2
Antenna Ey .....
Mode LIN(1) ..... FIX(157) LIN(1) .....
SUM/SEP SUM ..... SEP ..... SUM .....
Toggle OFF .....

RAD1
Antenna Ex .....
Mode LIS(2,3) .....
SUM/SEP SUM .....
Toggle OFF .....

TNR
Antenna ExEy .....
Mode A-32 .....
Sweep ABCDE .....
  
```