

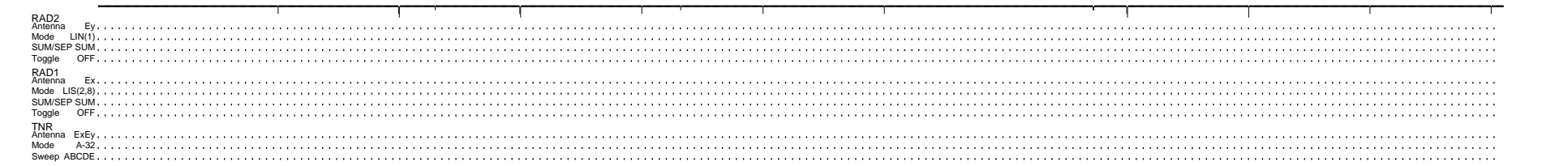
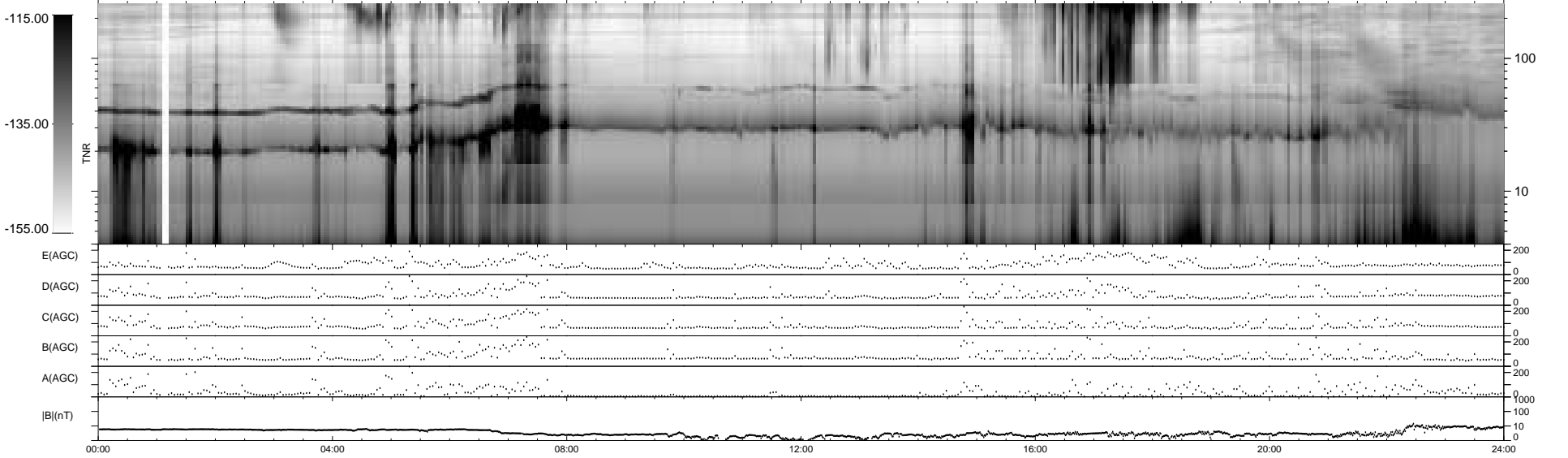
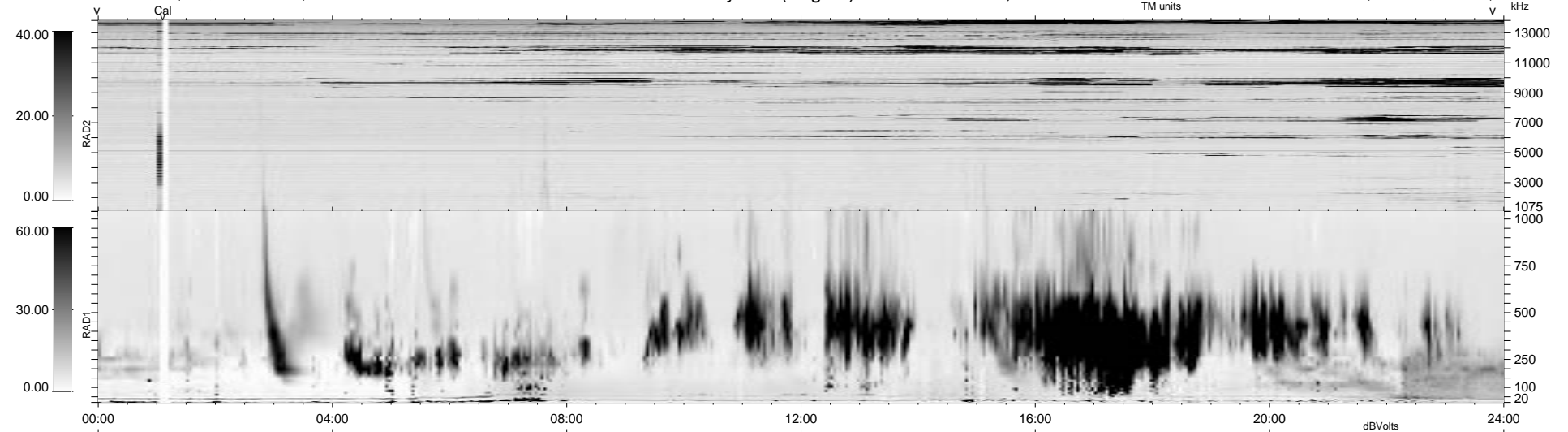
17 bad + 1861 good MF/1878MF projected (99%) - 0 missing MFs
 Avg interval = 180 secs
 Re = 38.90 (18.10, 34.14, 4.49 GSE)

1.7d VMS-SunOS

LZ version = v01

WIND/WAVES Summary Plot (Page 1) for 07-SEP-1997, DOY = 250

DAILY Tue Sep 23, 2008
 Re = 24.44 (-1.00, 24.17, 3.48 GSE)



RAD2
 Antenna Ey
 Mode LIN(1)
 SUM/SEP SUM
 Toggle OFF
 RAD1
 Antenna Ex
 Mode LIS(2,3)
 SUM/SEP SUM
 Toggle OFF
 TNR
 Antenna ExEy
 Mode A-32
 Sweep ABCDE