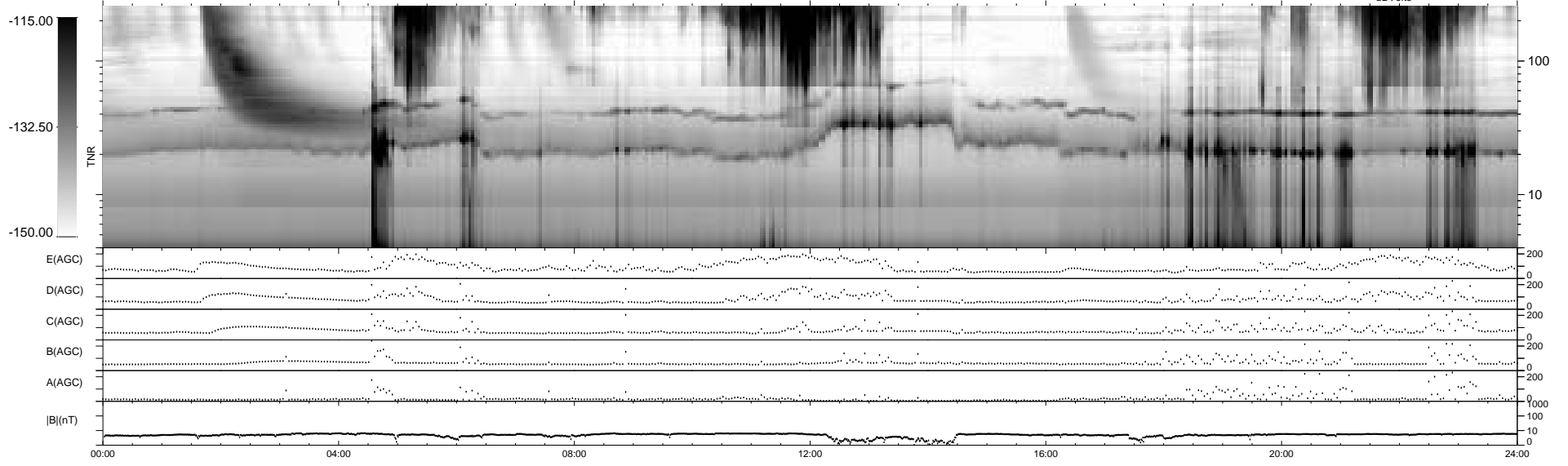
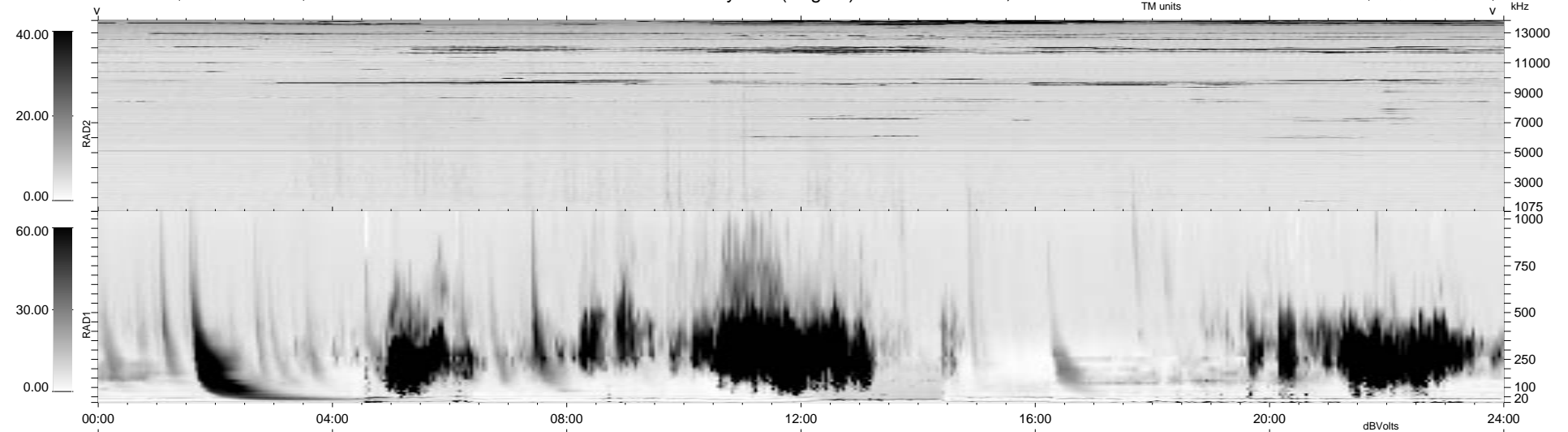


24 bad + 1854 good MF/1878MF projected (98%) - 0 missing MFs
 Avg interval = 180 secs
 Re = 50.96 (34.04, 37.65, 4.52 GSE)

1.7d VMS-SunOS LZ version = v01

WIND/WAVES Summary Plot (Page 1) for 06-SEP-1997, DOY = 249

DAILY Tue Sep 23, 2008
 Re = 38.99 (18.22, 34.18, 4.49 GSE)



RAD2
 Antenna Ey
 Mode LIN(1)
 SUM/SEP SUM
 Toggle OFF
 RAD1
 Antenna Ex
 Mode LIS(2,3)
 SUM/SEP SUM
 Toggle OFF
 TNR
 Antenna ExEy
 Mode A-32
 Sweep ABCDE