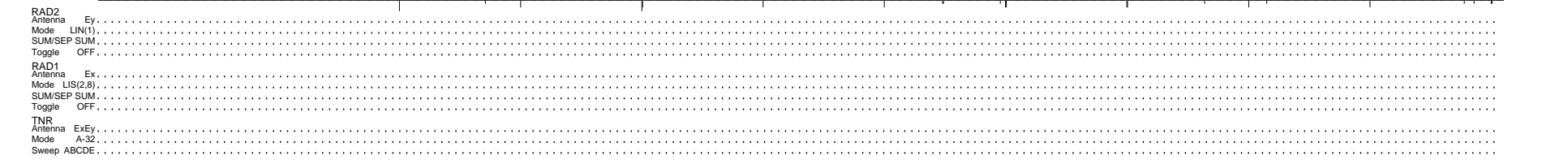
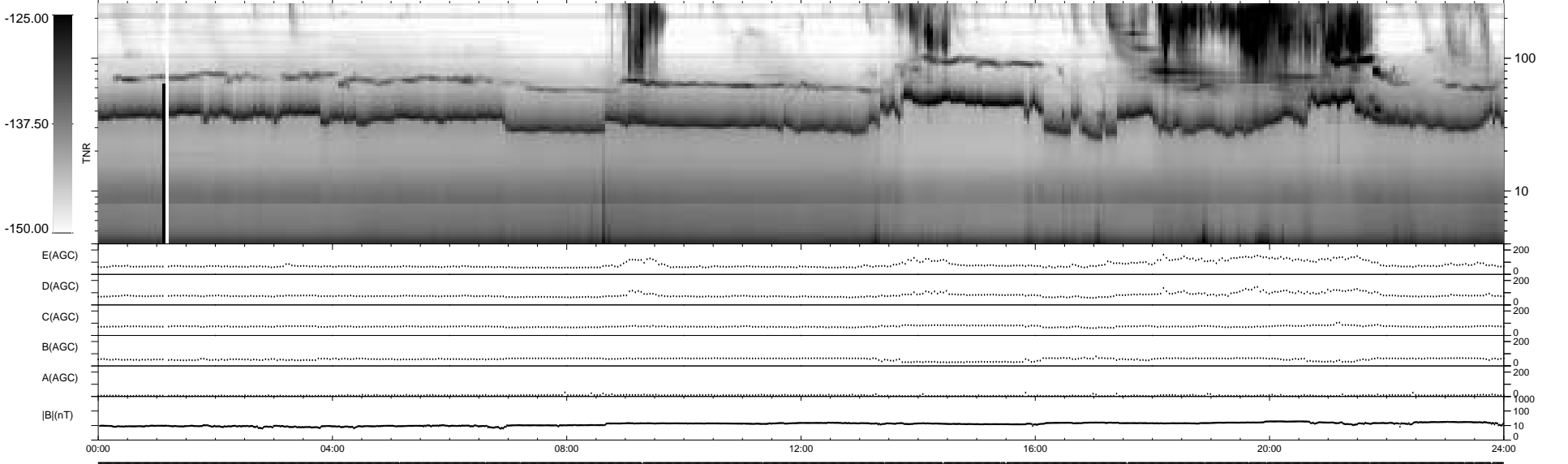
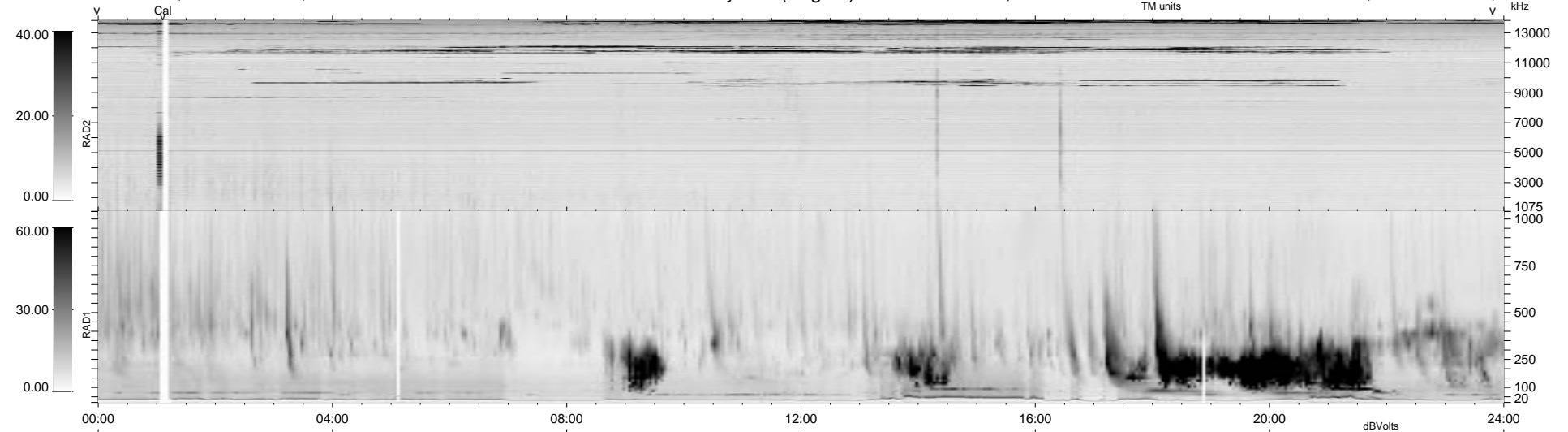


22 bad + 1856 good MF/1878MF projected (98%) - 0 missing MFs  
 Avg interval = 180 secs  
 Re = 79.33 (72.07, 33.12, 1.61 GSE)

1.7d VMS-SunOS LZ version = v01

WIND/WAVES Summary Plot (Page 1) for 03-SEP-1997, DOY = 246

DAILY Tue Sep 23, 2008  
 Re = 71.17 (60.95, 36.61, 2.93 GSE)



```

RAD2
Antenna Ey .....
Mode LIN(1) .....
SUM/SEP SUM .....
Toggle OFF .....

RAD1
Antenna Ex .....
Mode LIS(2,3) .....
SUM/SEP SUM .....
Toggle OFF .....

TNR
Antenna ExEy .....
Mode A-32 .....
Sweep ABCDE .....
  
```