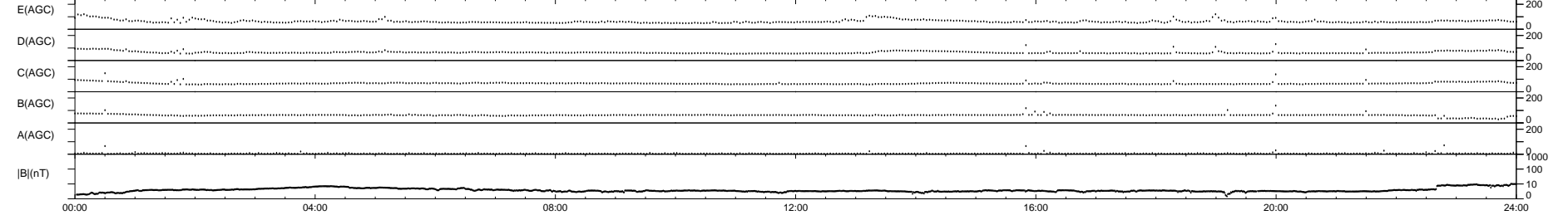
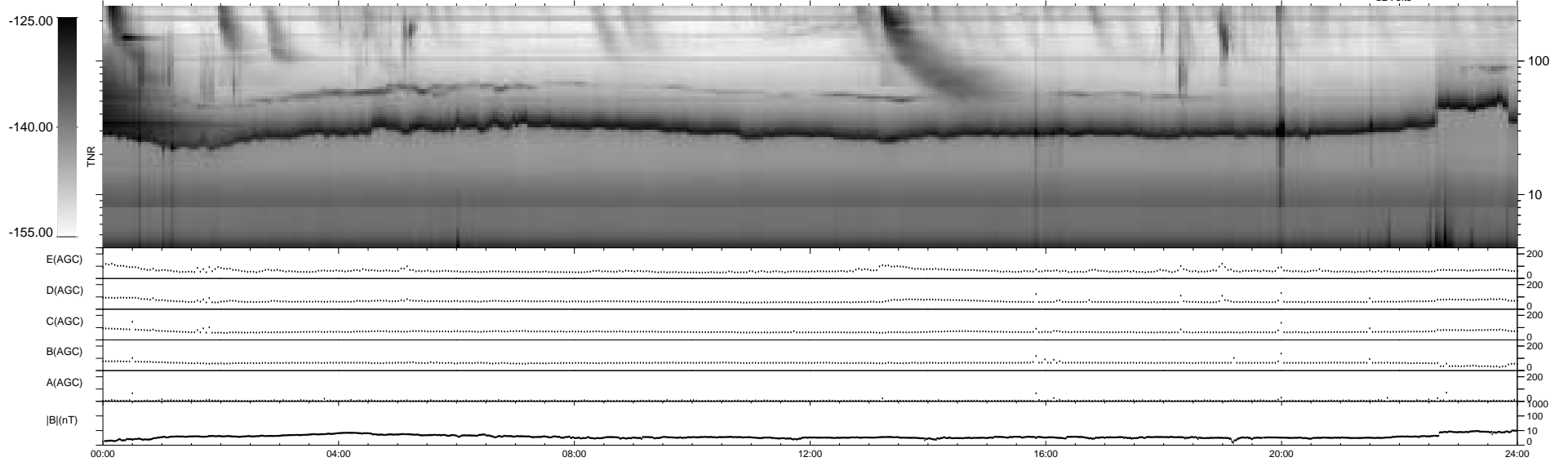
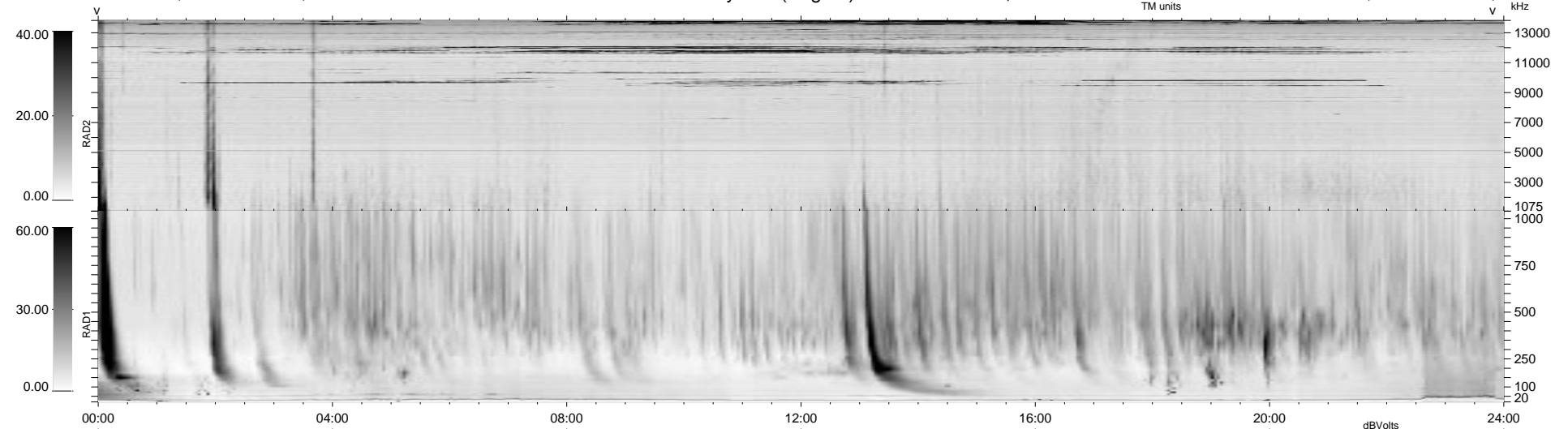


25 bad + 1853 good MF/1878MF projected (98%) - 0 missing MFs  
 Avg interval = 180 secs  
 Re = 86.63 (81.66, 28.92, 0.22 GSE)

1.7d VMS-SunOS LZ version = v01

WIND/WAVES Summary Plot (Page 1) for 02-SEP-1997, DOY = 245

DAILY Tue Sep 23, 2008  
 Re = 79.39 (72.14, 33.10, 1.60 GSE)



RAD2  
 Antenna Ey  
 Mode LIN(1)  
 SUM/SEP SUM  
 Toggle OFF

RAD1  
 Antenna Ex  
 Mode LIS(2,3)  
 SUM/SEP SUM  
 Toggle OFF

TNR  
 Antenna ExEy  
 Mode A-32  
 Sweep ABCDE