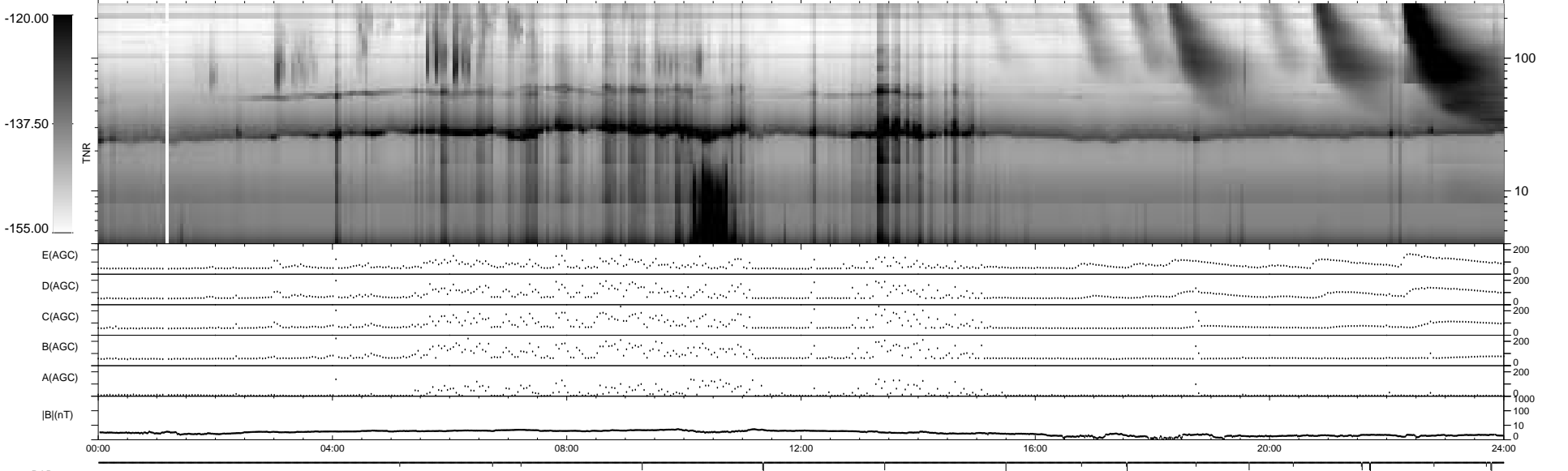
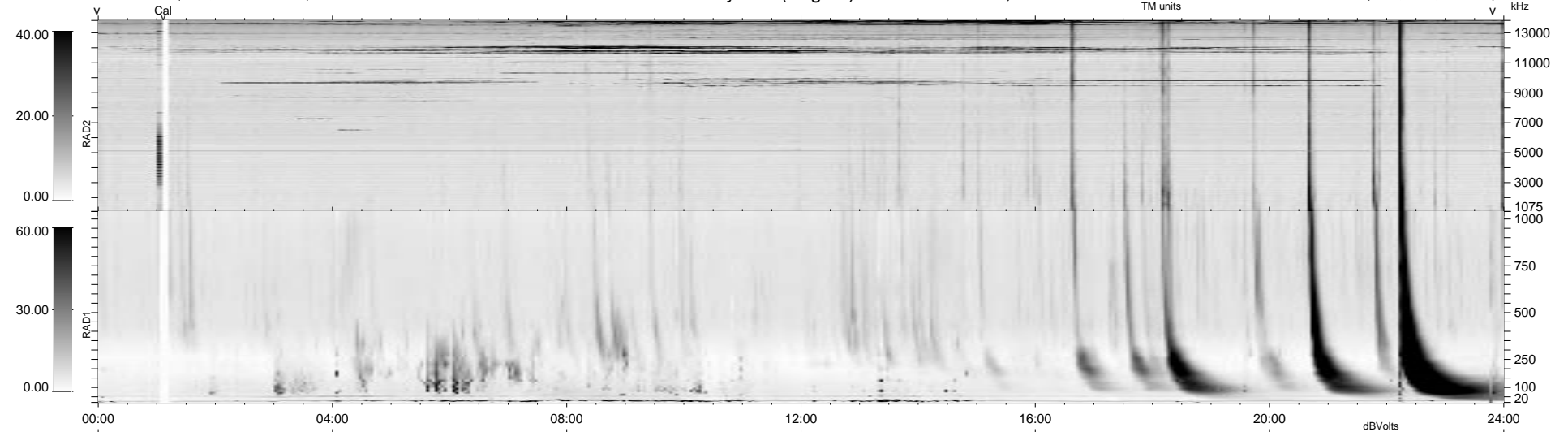


22 bad + 1856 good MF/1878MF projected (98%) - 0 missing MFs
 Avg interval = 180 secs
 Re = 93.18 (89.93, 24.38, -1.17 GSE)

1.7d VMS-SunOS LZ version = v01

WIND/WAVES Summary Plot (Page 1) for 01-SEP-1997, DOY = 244

DAILY Tue Sep 23, 2008
 Re = 86.68 (81.72, 28.89, 0.21 GSE)



```

RAD2
Antenna Ey .....
Mode LIN(1) .....
SUM/SEP SUM .....
Toggle OFF .....

RAD1
Antenna Ex .....
Mode LIS(2,3) .....
SUM/SEP SUM .....
Toggle OFF .....

TNR
Antenna ExEy .....
Mode A-32 .....
Sweep ABCDE .....
  
```