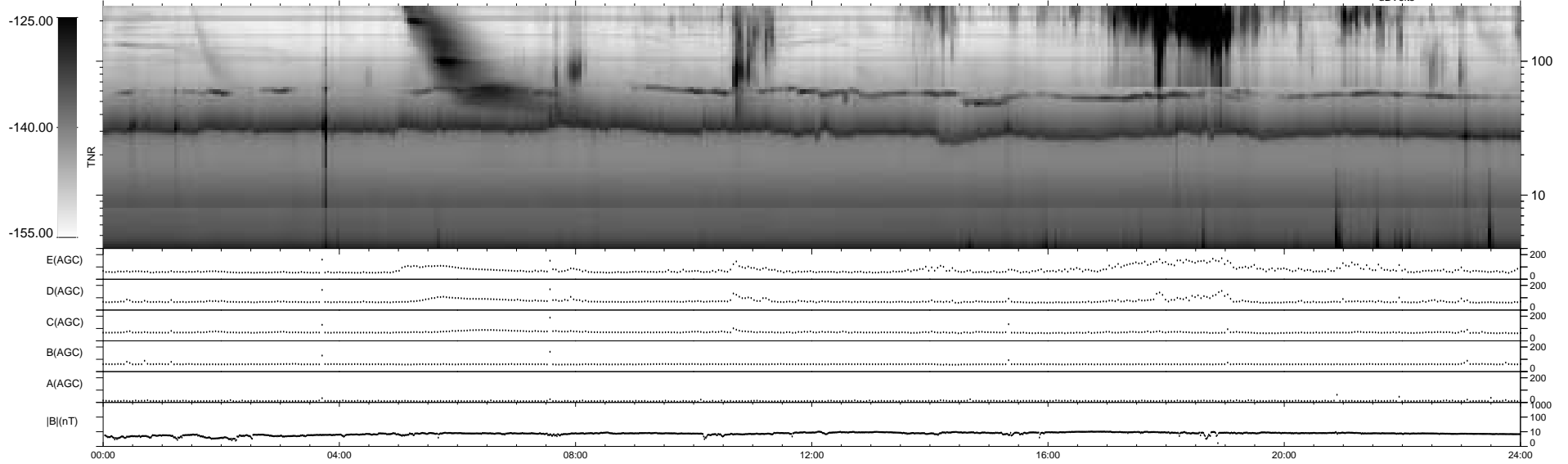
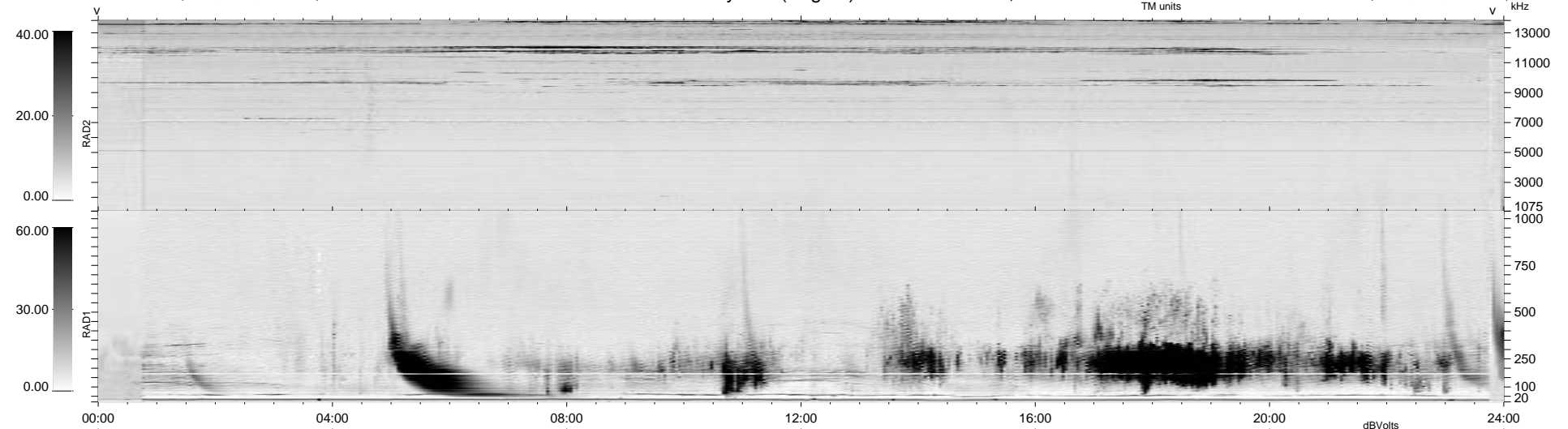


22 bad + 1856 good MF/1878MF projected (98%) - 0 missing MFs  
 Avg interval = 180 secs  
 Re = 109.21 (108.60, 10.34, -5.21 GSE)

1.7d VMS-SunOS LZ version = v01  
 DAILY Tue Sep 23, 2008  
 Re = 104.45 (103.30, 14.97, -3.91 GSE)

### WIND/WAVES Summary Plot (Page 1) for 29-AUG-1997, DOY = 241



```

RAD2
Antenna Ey .....
Mode LIN(1) .....
SUM/SEP SUM .....SUM
Toggle OFF .....

RAD1
Antenna Ex .....
Mode LIS(2,3) .....LIS(2,8)
SUM/SEP SUM .....SUM
Toggle OFF .....

TNR
Antenna ExEy .....
Mode A-32 .....
Sweep ABCDE .....
  
```