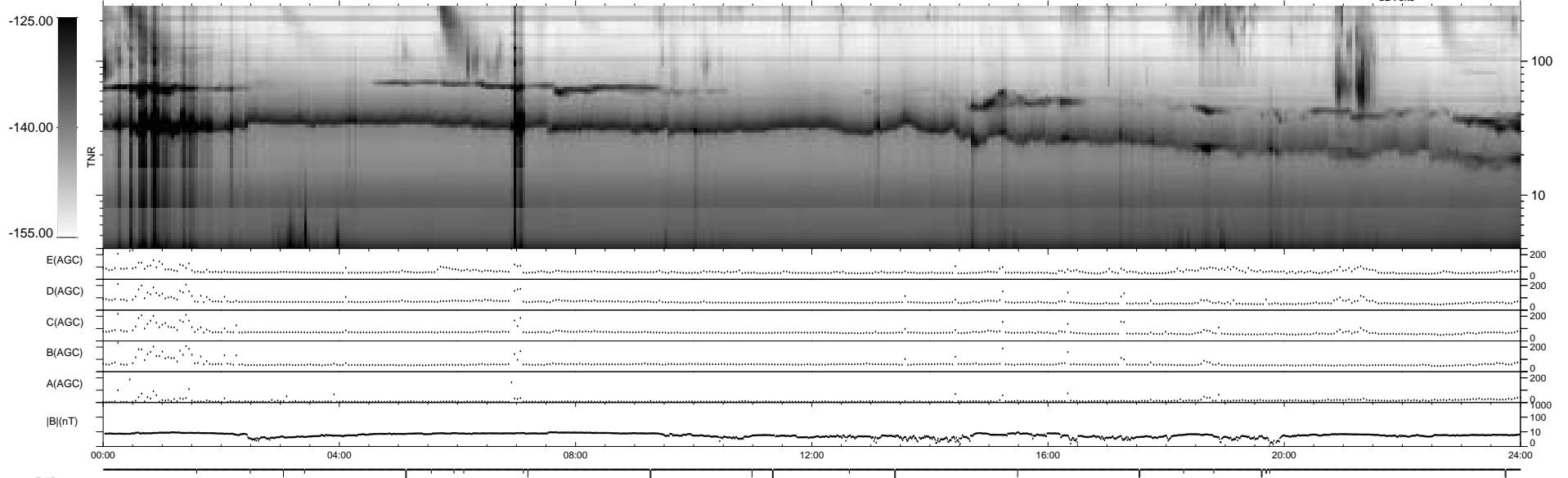
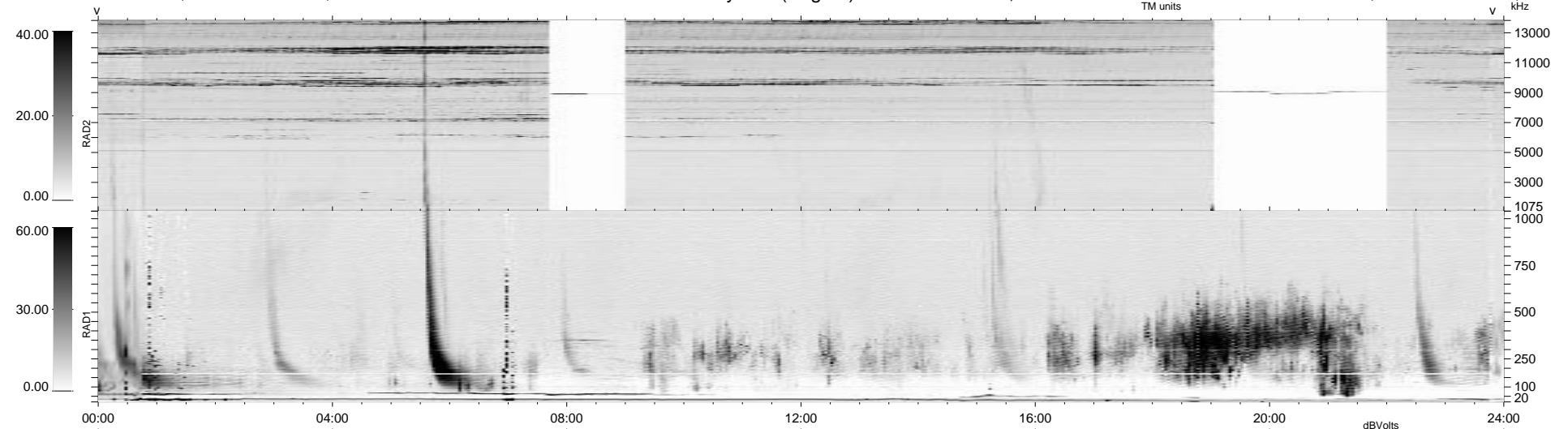


31 bad + 1847 good MF/1878MF projected (98%) - 0 missing MFs
 Avg interval = 180 secs
 Re = -132.71 (123.55, -45.25, -17.32 GSE)

1.7d VMS-SunOS LZ version = v01
 DAILY Tue Sep 23, 2008
 Re = 133.77 (125.59, -42.81, -17.03 GSE)

WIND/WAVES Summary Plot (Page 1) for 13-AUG-1997, DOY = 225



RAD2
 Antenna Ey
 Mode LIN(1) FIX(157) LIN(1)
 SUM/SEP SUM SEP
 Toggle OFF

RAD1
 Antenna Ex
 Mode LIS(2,8) LIS(2,8)
 SUM/SEP SUM SEP
 Toggle OFF

TNR
 Antenna ExEy
 Mode A-32
 Sweep ABCDE