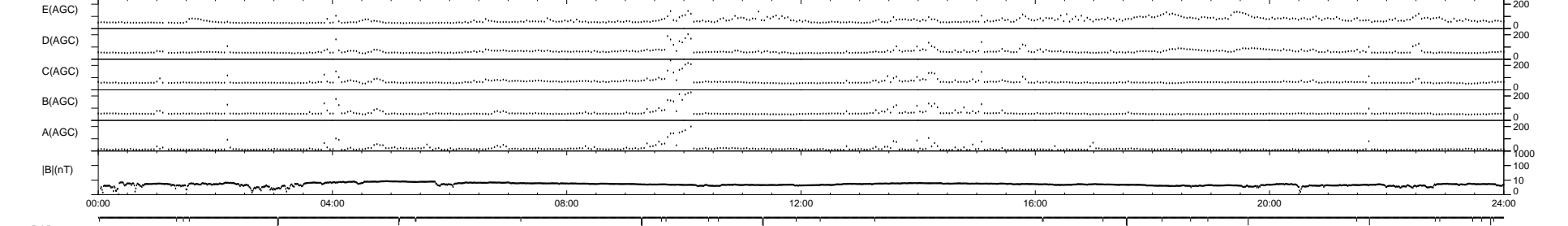
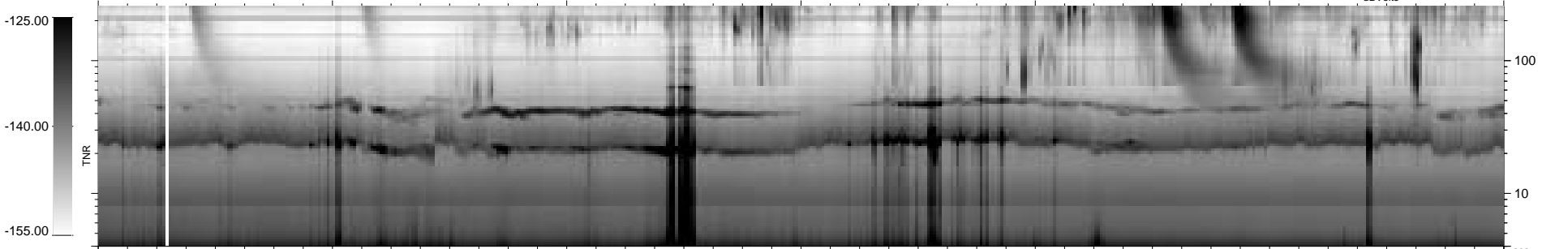
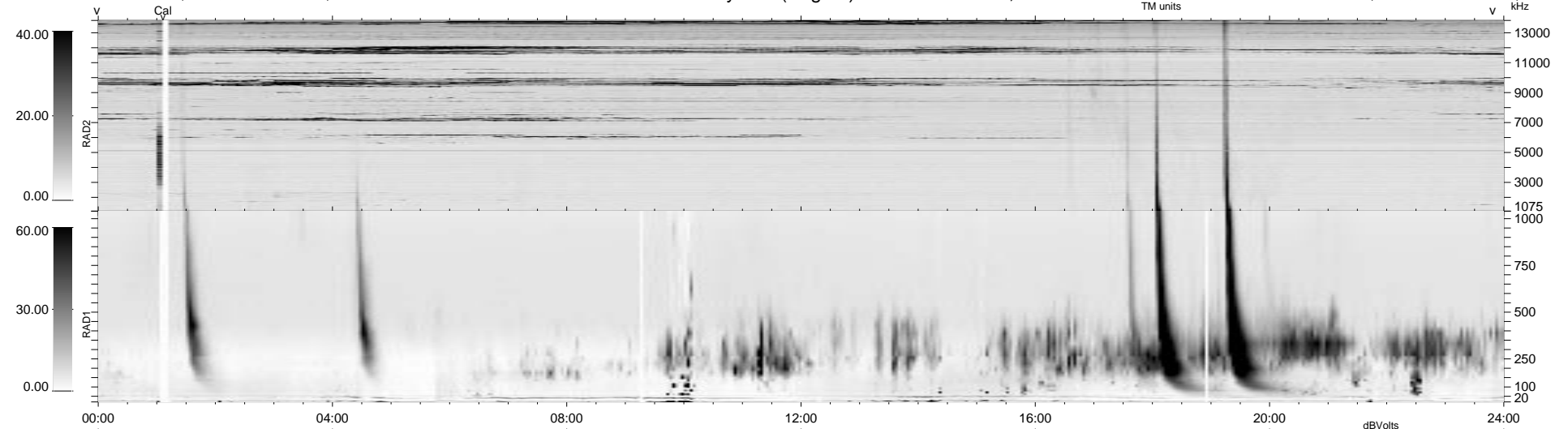


39 bad + 1839 good MF/1878MF projected (97%) - 0 missing MFs
 Avg interval = 180 secs
 Re = - 127.08 (114.81, -51.95, -16.40 GSE)

1.7d VMS-SunOS LZ version = v01
 DAILY Tue Sep 23, 2008
 Re = 129.34 (118.15, -49.85, -16.80 GSE)

WIND/WAVES Summary Plot (Page 1) for 10-AUG-1997, DOY = 222



RAD2 Antenna Ey
 Mode LIN(1)
 SUM/SEP SUM
 Toggle OFF
 RAD1 Antenna Ex
 Mode LIS(2,3)
 SUM/SEP SUM
 Toggle OFF
 TNR Antenna ExEy
 Mode A-32
 Sweep ABCDE