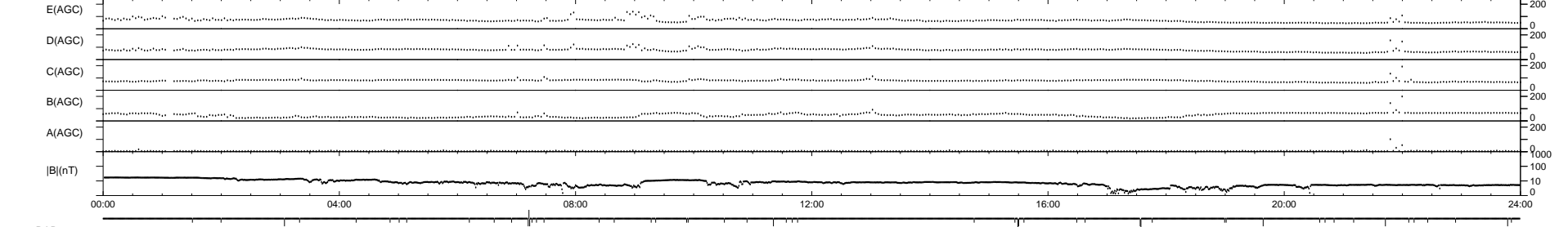
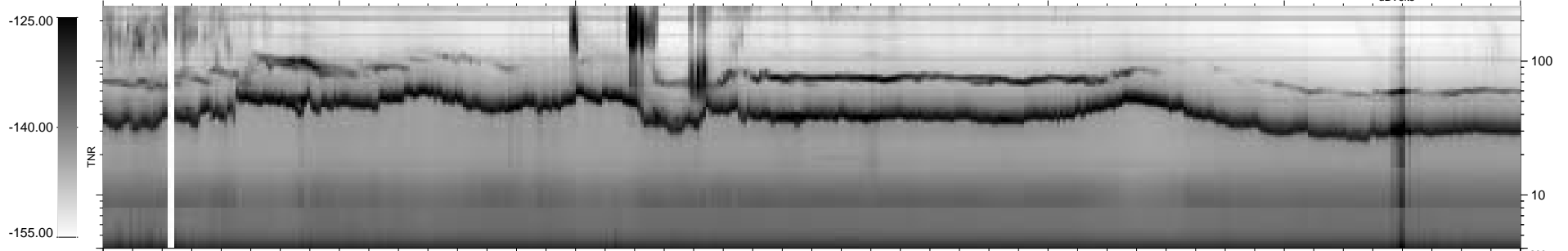
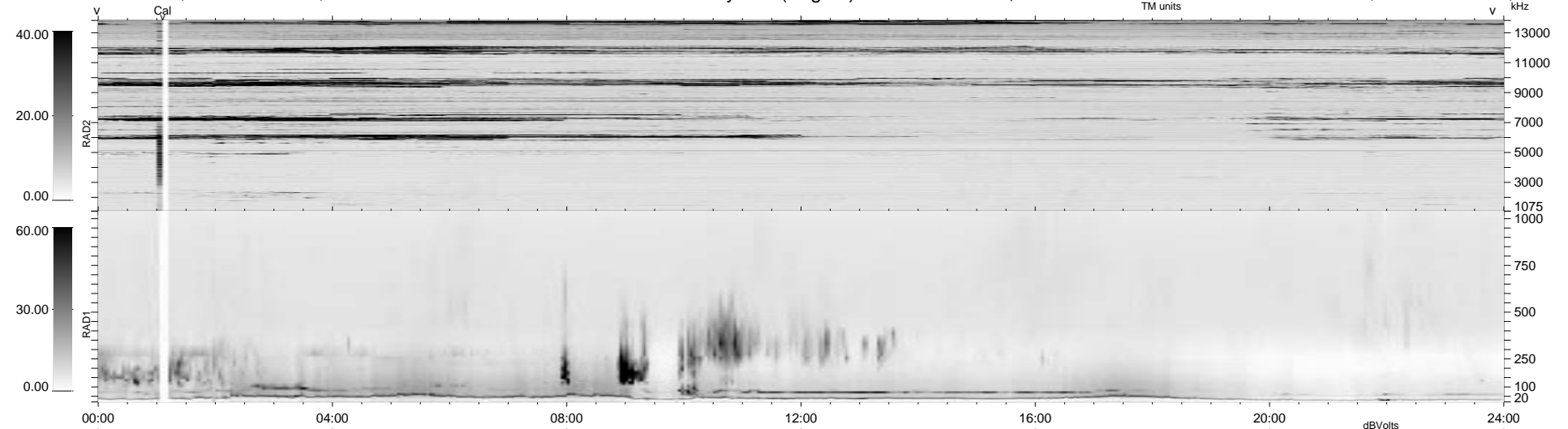


52 bad + 1825 good MF/1878MF projected (97%) - 1 missing MF
 Avg interval = 180 secs
 Re = 103.42 (82.88, -60.73, -11.85 GSE)

1.7d VMS-SunOS LZ version = v01
 DAILY Tue Sep 23, 2008
 Re = 108.71 (89.79, -59.91, -12.89 GSE)

WIND/WAVES Summary Plot (Page 1) for 04-AUG-1997, DOY = 216



```

RAD2
Antenna Ey .....
Mode LIN(1) .....
SUM/SEP SUM .....
Toggle OFF .....

RAD1
Antenna Ex .....
Mode LIS(2,3) .....
SUM/SEP SUM .....
Toggle OFF .....

TNR
Antenna ExEy .....
Mode A-32 .....
Sweep ABCDE .....
  
```