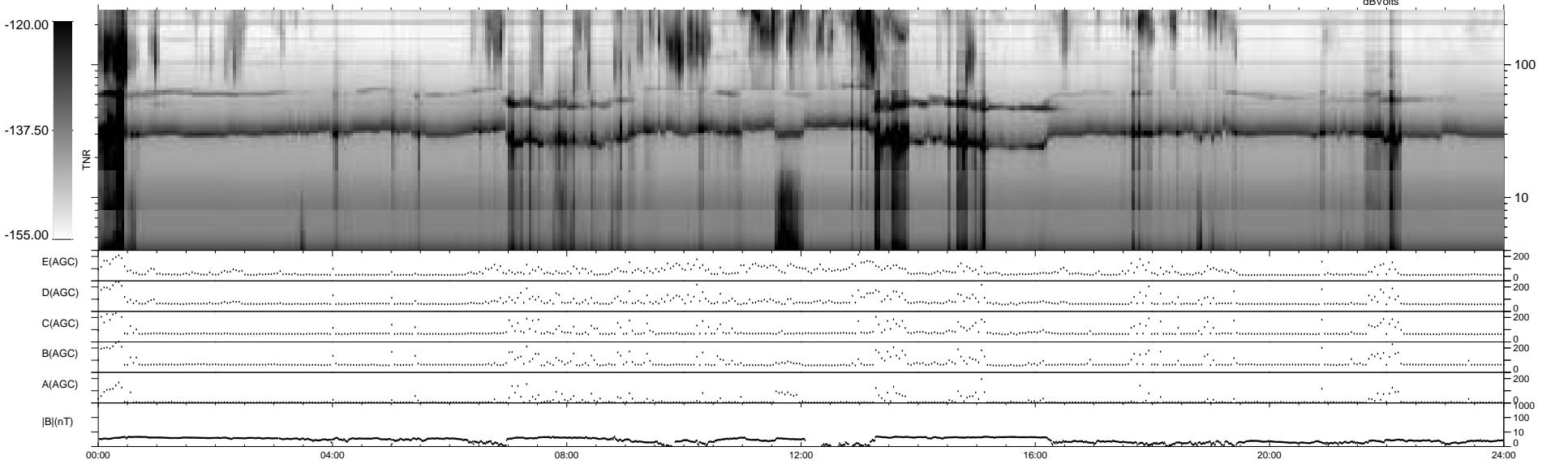
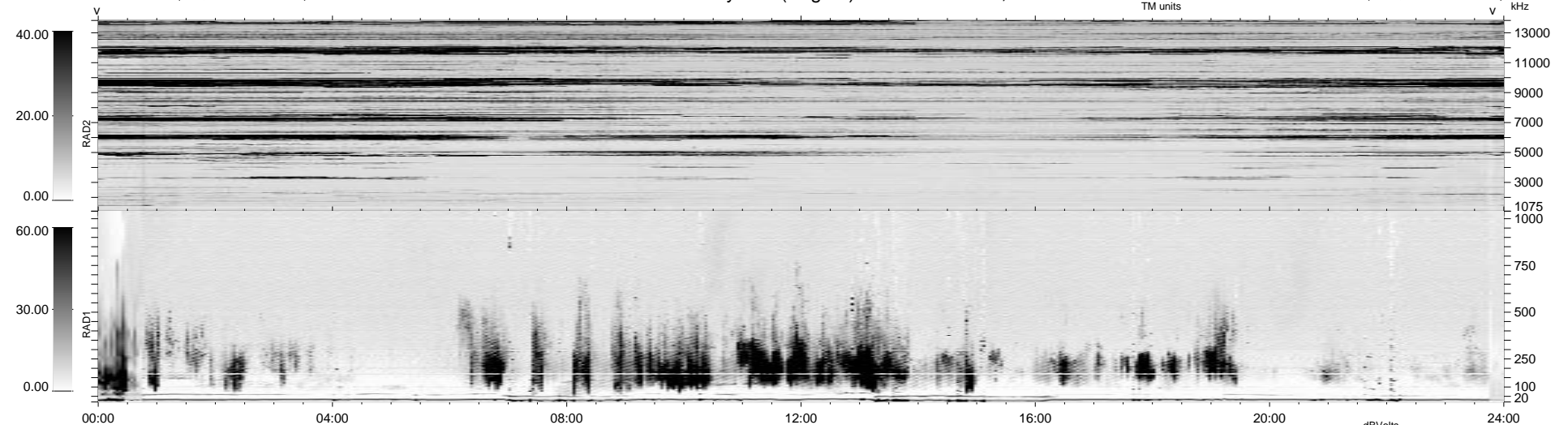


19 bad + 1860 good MF/1879MF projected (98%) - 0 missing MFs
 Avg interval = 180 secs
 Re = 39.61 (7.90, -38.80, -1.17 GSE)

1.7d VMS-SunOS LZ version = v01
 DAILY Tue Sep 23, 2008
 Re = 52.72 (20.92, -48.32, -2.65 GSE)

WIND/WAVES Summary Plot (Page 1) for 28-JUL-1997, DOY = 209



RAD2
 Antenna Ey
 Mode LIN(1)
 SUM/SEP SUM
 Toggle OFF

RAD1
 Antenna Ex
 Mode LIS(2,3)
 SUM/SEP SUM
 Toggle OFF

TNR
 Antenna ExEy
 Mode A-32
 Sweep ABCDE