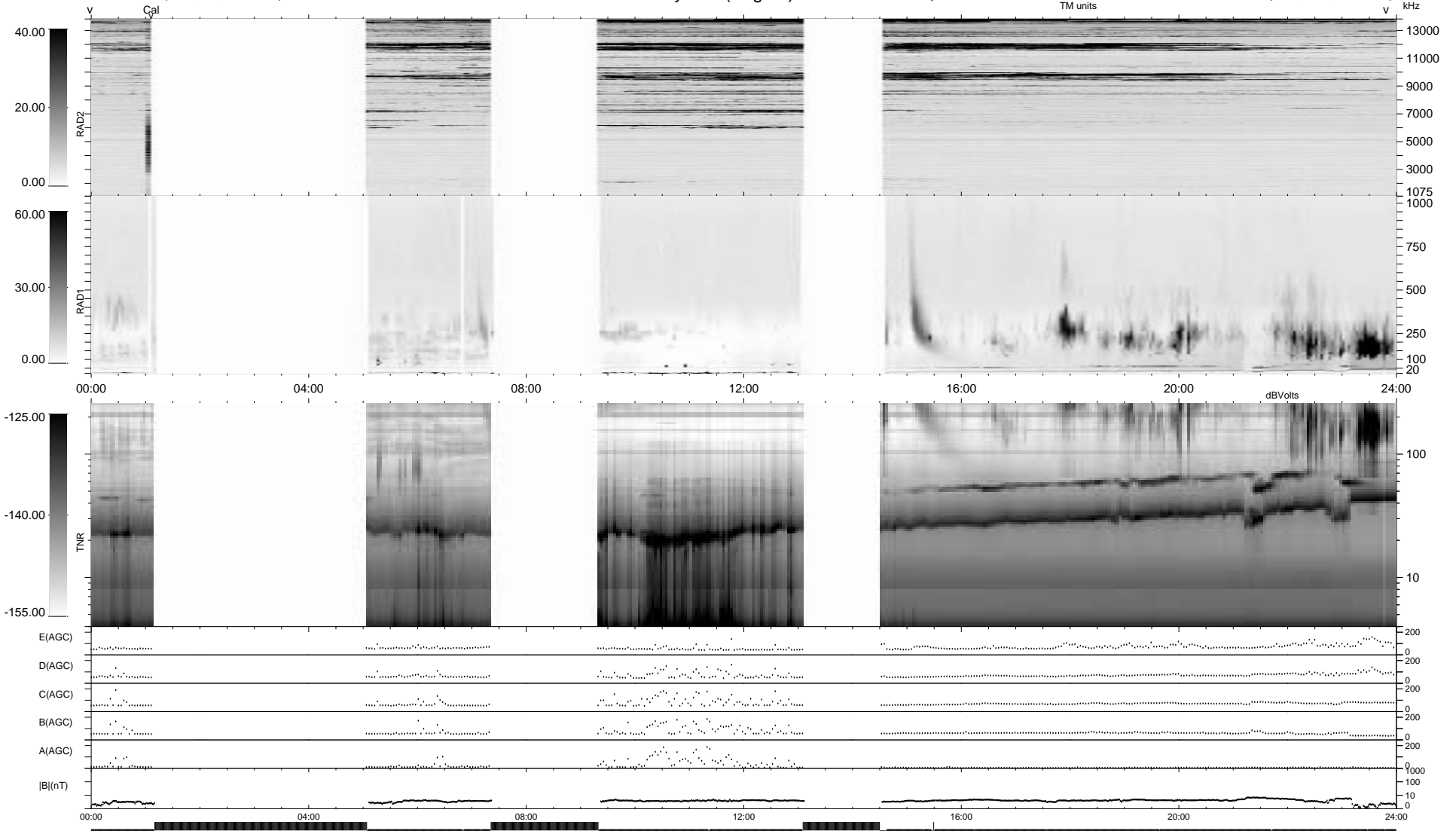


32 bad + 1273 good MF/1878MF projected (67%) - 573 missing MFs  
 Avg interval = 180 secs  
 Re = 56.53 (55.62, 8.63, -5.30 GSE)

1.7d VMS-SunOS LZ version = v01  
 DAILY Tue Sep 23, 2008  
 Re = 44.94 (42.47, 14.13, -4.01 GSE)

WIND/WAVES Summary Plot (Page 1) for 23-JUL-1997, DOY = 204



RAD2 Antenna Ey .....  
 Mode LIN(1) .....  
 SUM/SEP SUM .....  
 Toggle OFF .....  
 RAD1 Antenna Ex .....  
 Mode LIS(2,3) .....  
 SUM/SEP SUM .....  
 Toggle OFF .....  
 TNR Antenna ExEy .....  
 Mode A-32 .....  
 Sweep ABCDE .....