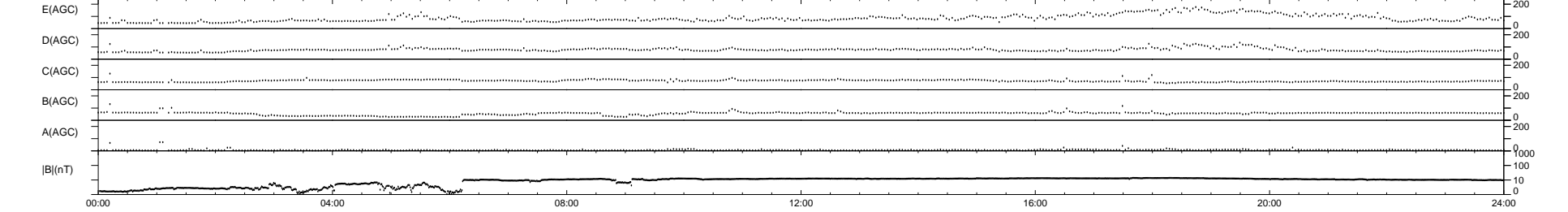
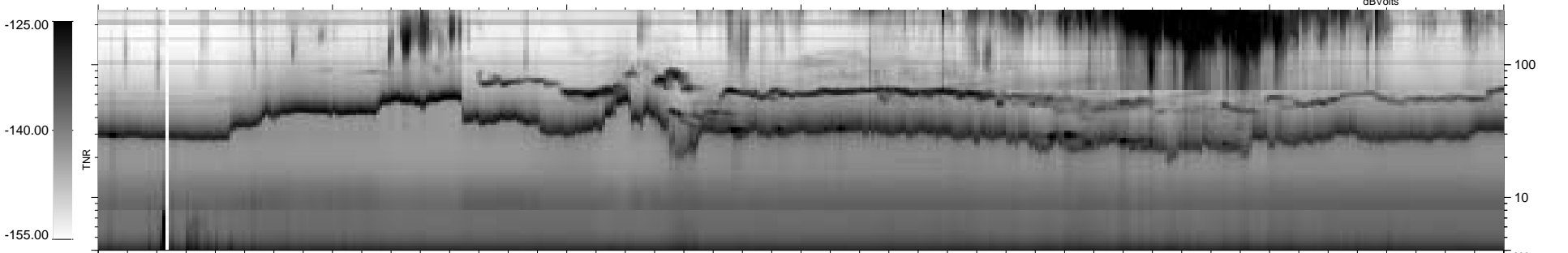
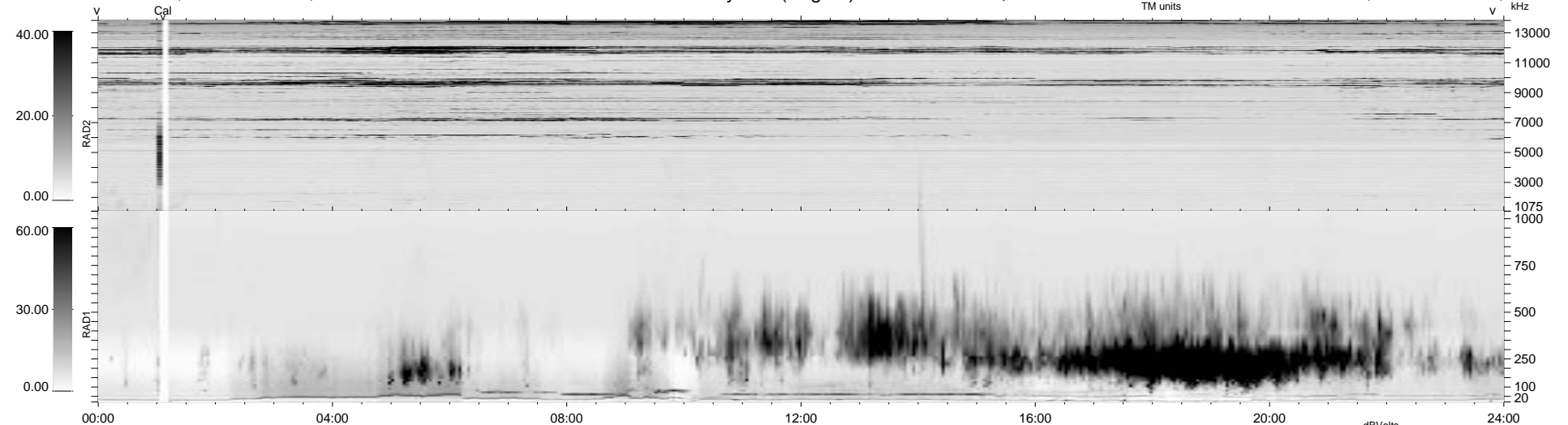


23 bad + 1855 good MF/1878MF projected (98%) - 0 missing MFs
 Avg interval = 180 secs
 Re = 92.08 (87.03, -29.06, -7.74 GSE)

1.7d VMS-SunOS LZ version = v01

WIND/WAVES Summary Plot (Page 1) for 15-JUL-1997, DOY = 196

DAILY Tue Sep 23, 2008
 Re = 91.66 (87.67, -25.56, -7.94 GSE)



```

RAD2
Antenna Ey .....
Mode LIN(1) .....
SUM/SEP SUM .....
Toggle OFF .....

RAD1
Antenna Ex .....
Mode LIS(2,3) .....
SUM/SEP SUM .....
Toggle OFF .....

TNR
Antenna ExEy .....
Mode A-32 .....
Sweep ABCDE .....
  
```