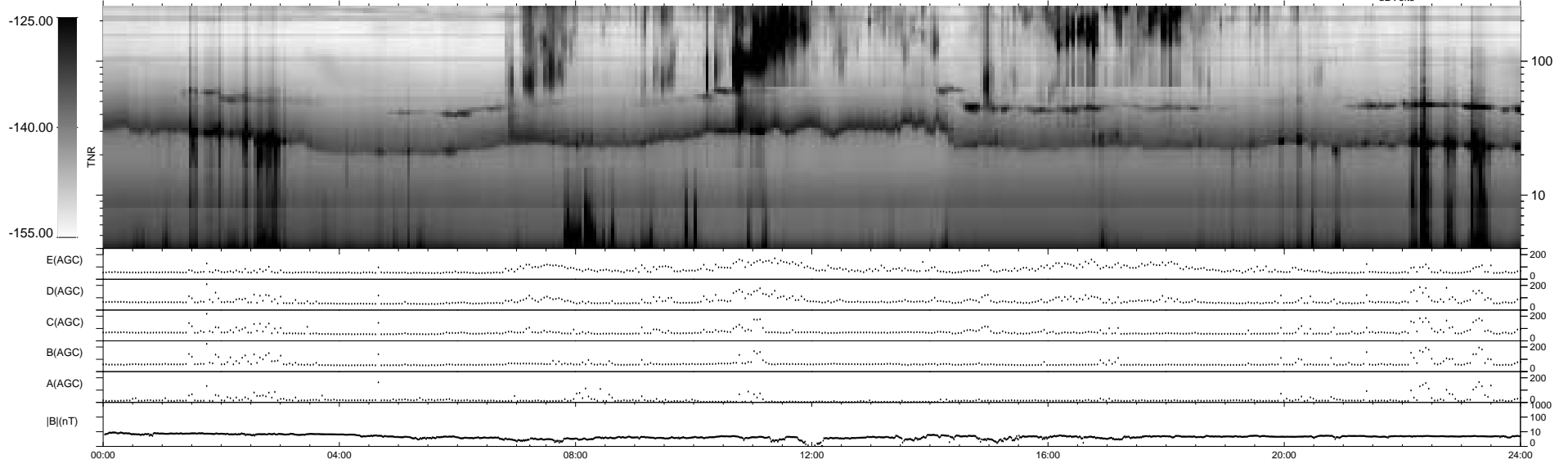
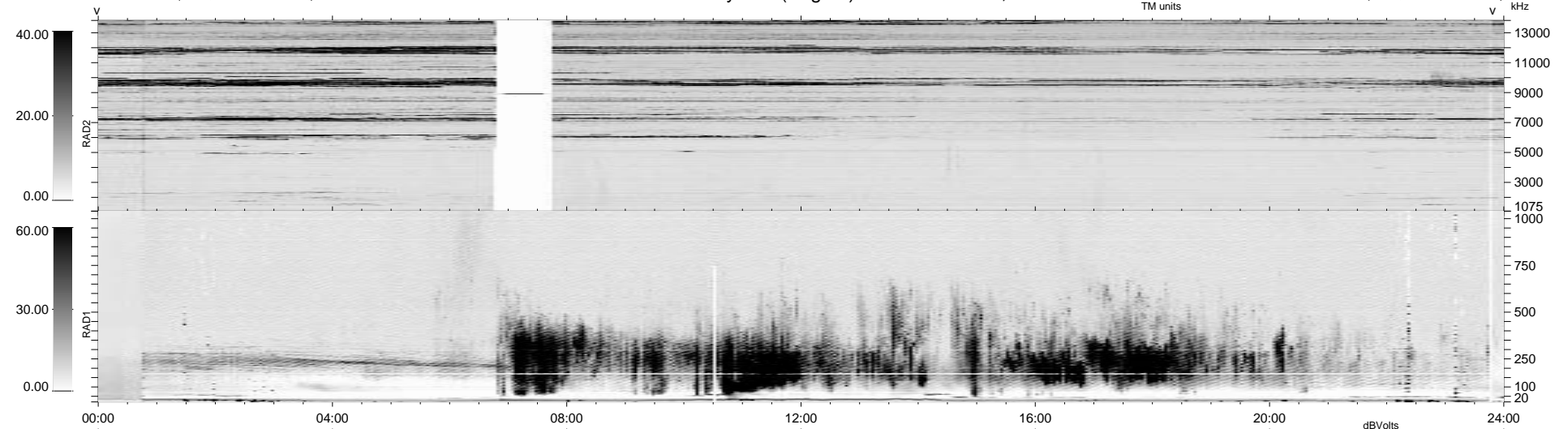


42 bad + 1836 good MF/1878MF projected (97%) - 0 missing MFs
 Avg interval = 180 secs
 Re = 78.25 (66.67, -40.65, -5.05 GSE)

1.7d VMS-SunOS LZ version = v01
 DAILY Tue Sep 23, 2008
 Re = 83.31 (73.21, -39.32, -5.81 GSE)

WIND/WAVES Summary Plot (Page 1) for 10-JUL-1997, DOY = 191



```

RAD2
Antenna Ey ..... Fix(357) LIN(1) .....
Mode LIN(1) .....
SUM/SEP SUM .....
Toggle OFF .....

RAD1
Antenna Ex .....
Mode LIS(2,3) ..... LIN(1) .....
SUM/SEP SUM .....
Toggle OFF .....

TNR
Antenna ExEy .....
Mode A-32 .....
Sweep ABCDE .....
  
```