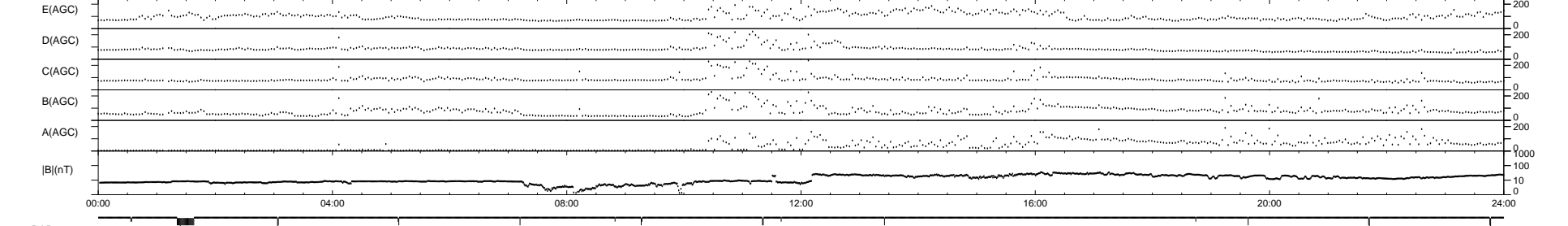
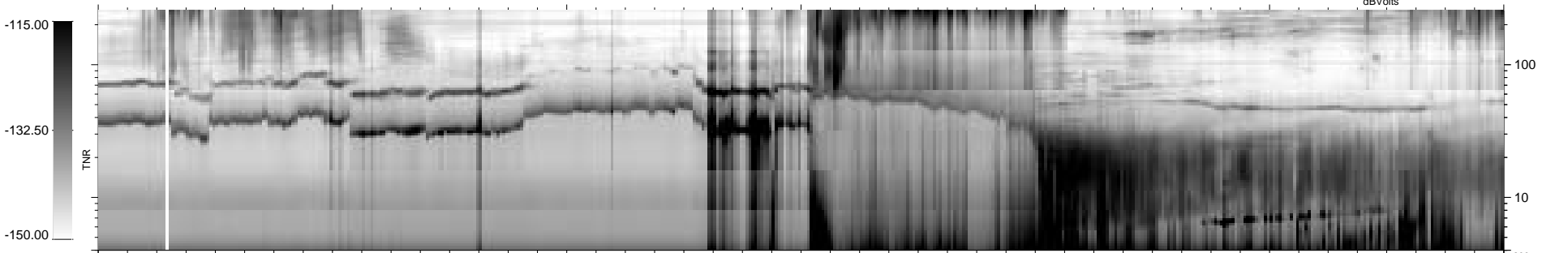
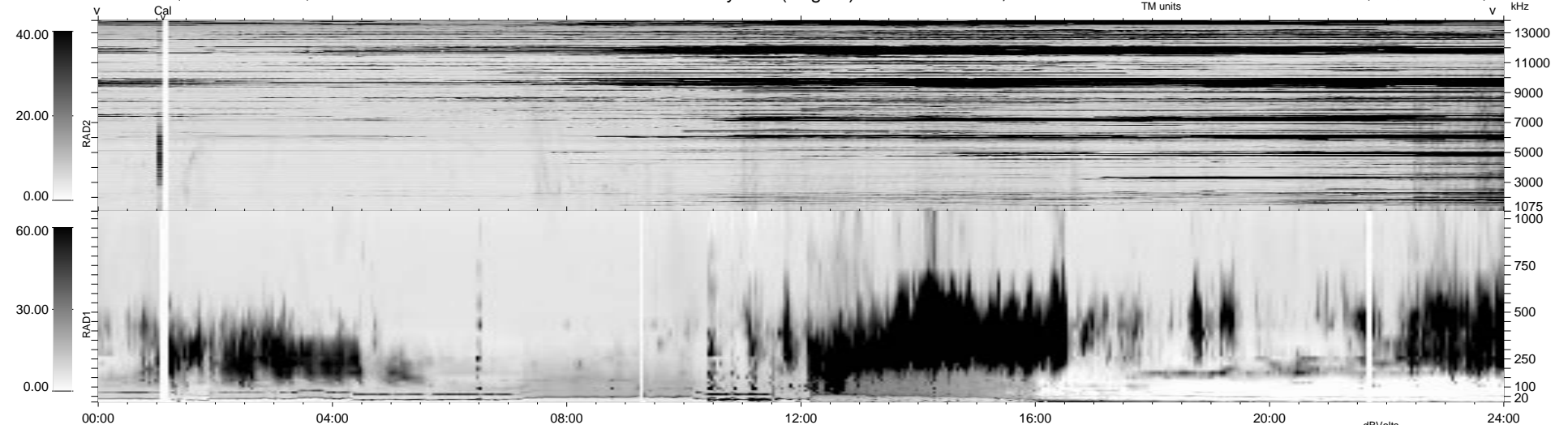


43 bad + 1835 good MF/1878MF projected (97%) - 0 missing MFs
 Avg interval = 180 secs
 Re = 29.42 (16.41, 24.28, -2.58 GSE)

1.7d VMS-SunOS LZ version = v01

WIND/WAVES Summary Plot (Page 1) for 03-JUL-1997, DOY = 184

DAILY Tue Sep 23, 2008
 Re = 11.42 (-8.34, 7.79, 0.44 GSE)



```

RAD2
Antenna Ey .....
Mode LIN(1) .....
SUM/SEP SUM .....
Toggle OFF .....

RAD1
Antenna Ex .....
Mode LIS(2,3) .....
SUM/SEP SUM .....
Toggle OFF .....

TNR
Antenna ExEy .....
Mode A-32 .....
Sweep ABCDE .....
  
```