

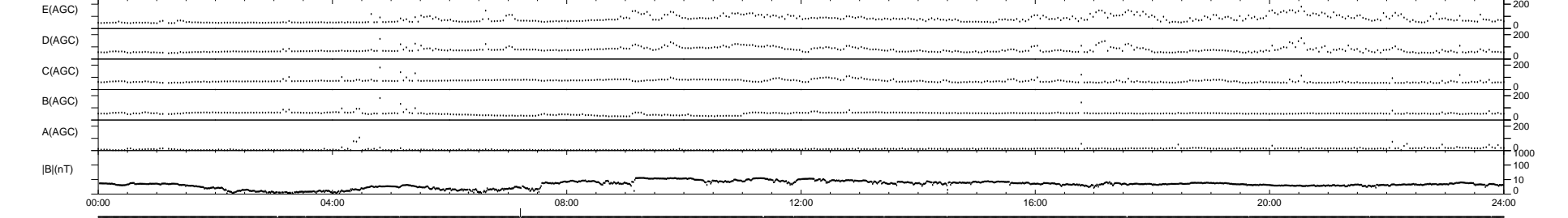
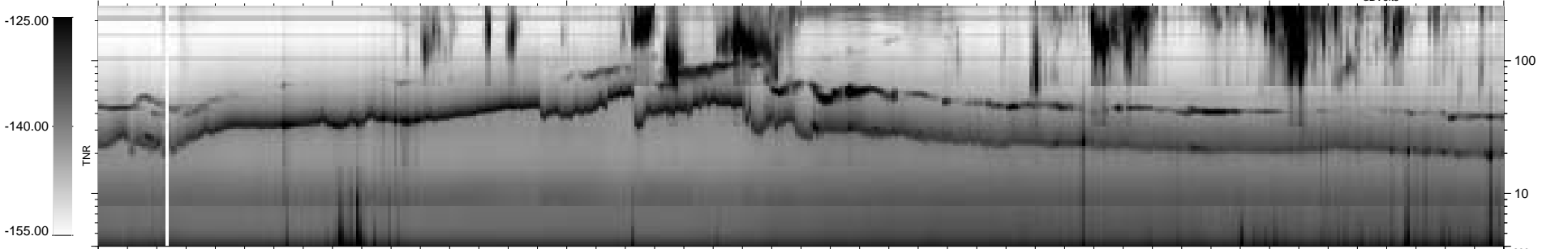
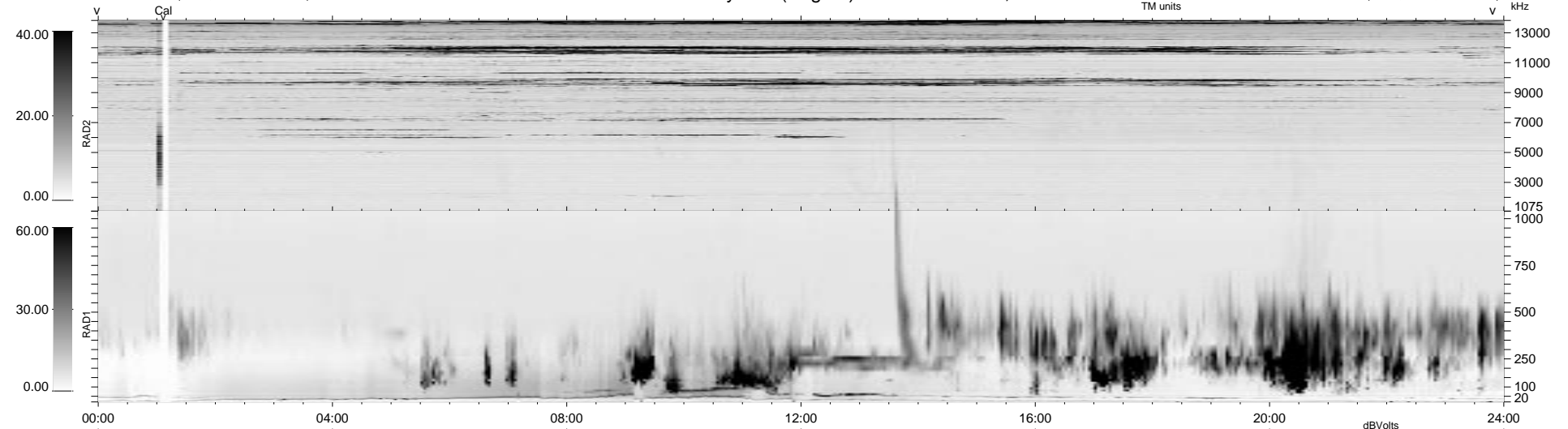
17 bad + 1861 good MF/1879MF projected (99%) - 1 missing MF
 Avg interval = 180 secs
 Re = - 84.77 (83.07, 14.90, -7.94 GSE)

1.7d VMS-SunOS

LZ version = v01

WIND/WAVES Summary Plot (Page 1) for 27-JUN-1997, DOY = 178

DAILY Tue Sep 23, 2008
 Re = 80.03 (77.59, 18.08, -7.70 GSE)



```

RAD2
Antenna Ey .....
Mode LIN(1) .....
SUM/SEP SUM .....
Toggle OFF .....

RAD1
Antenna Ex .....
Mode LIS(2,3) .....
SUM/SEP SUM .....
Toggle OFF .....

TNR
Antenna ExEy .....
Mode A-32 .....
Sweep ABCDE .....
  
```