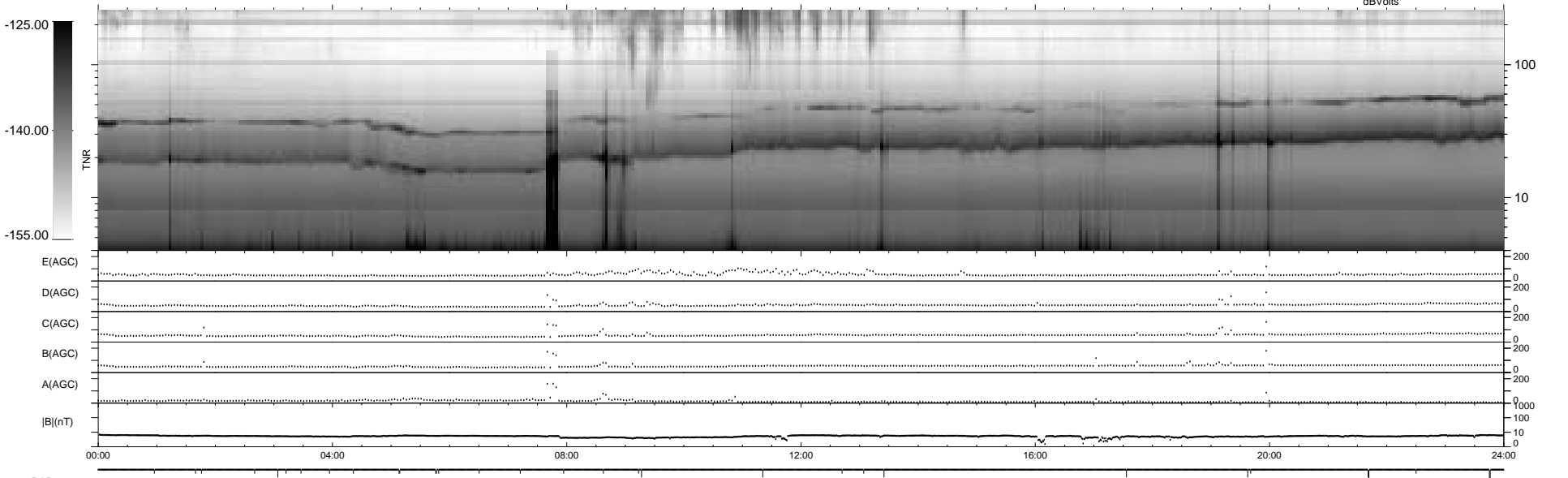
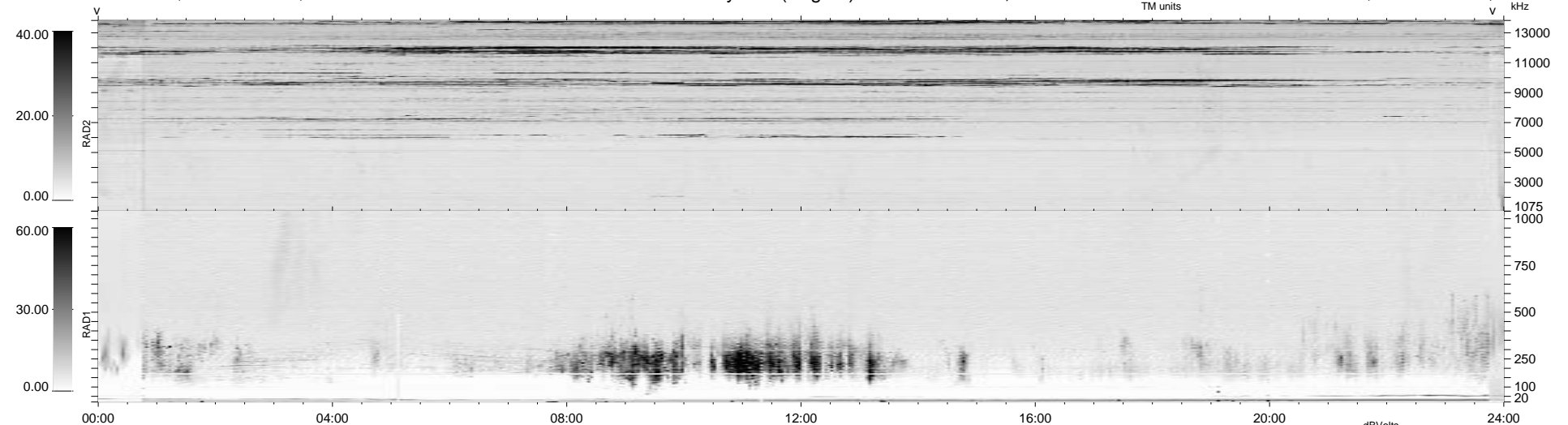


32 bad + 1847 good MF/1879MF projected (98%) - 0 missing MFs
 Avg interval = 180 secs
 Re = 92.23 (91.76, 4.91, -7.81 GSE)

1.7d VMS-SunOS LZ version = v01
 DAILY Tue Sep 23, 2008
 Re = 90.82 (90.09, 8.24, -7.98 GSE)

WIND/WAVES Summary Plot (Page 1) for 24-JUN-1997, DOY = 175



```

RAD2
Antenna Ey
Mode LIN(1)
SUM/SEP SUM
Toggle OFF

RAD1
Antenna Ex
Mode LIS(2,3)
SUM/SEP SUM
Toggle OFF

TNR
Antenna ExEy
Mode A-32
Sweep ABCDE
  
```