

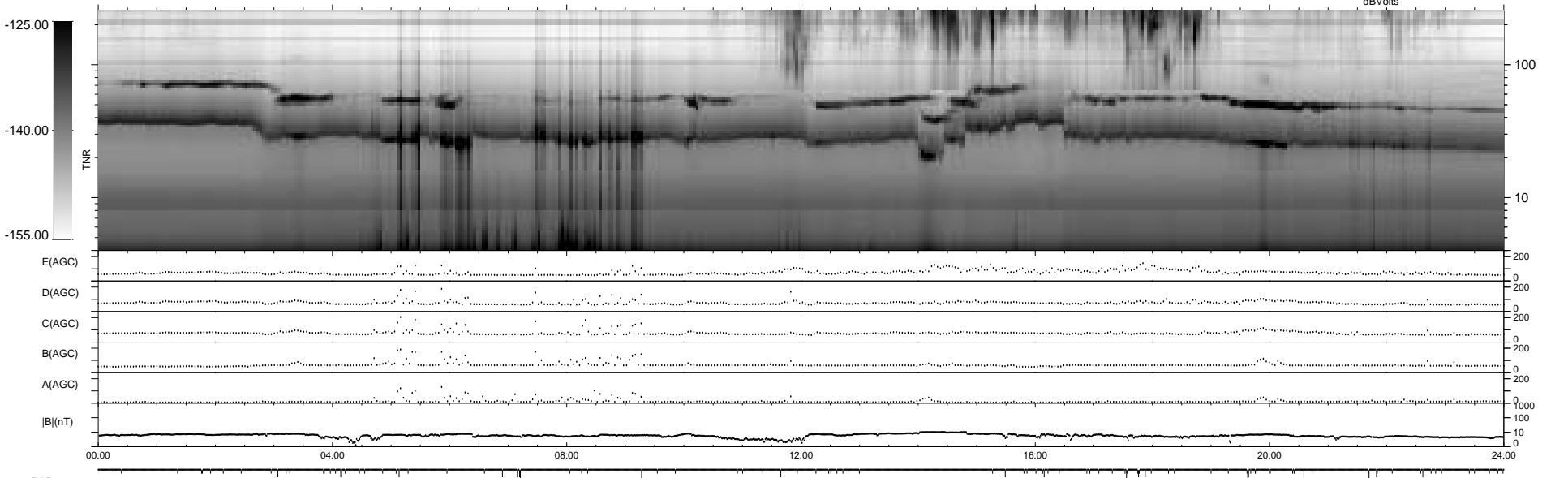
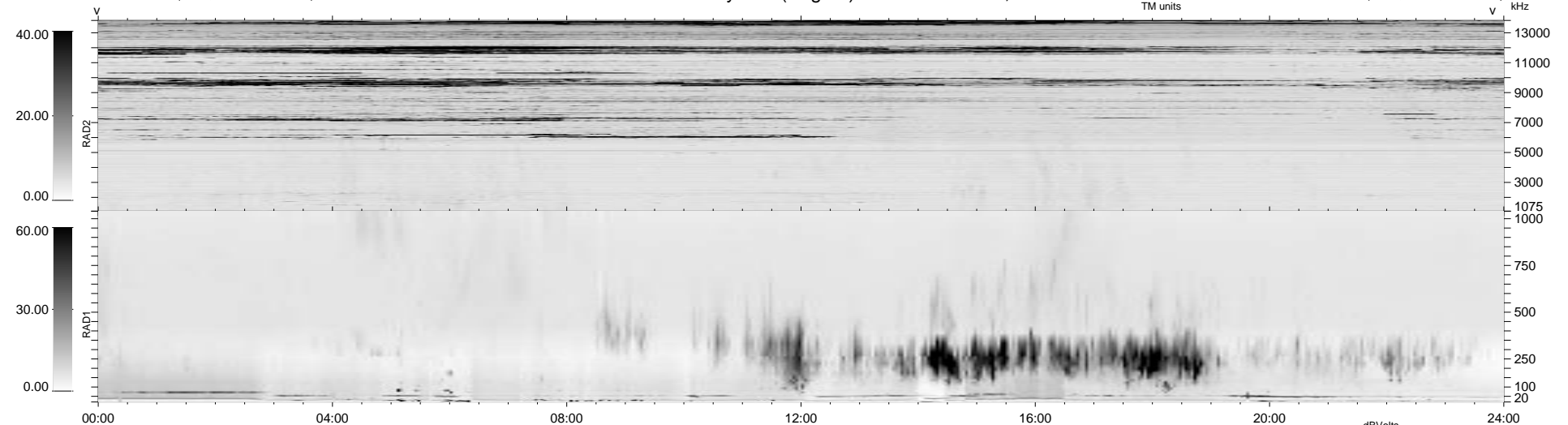
101 bad + 1778 good MF/1879MF projected (94%) - 0 missing MFs
 Avg interval = 180 secs
 Re = 65.06 (61.46, -21.18, -2.61 GSE)

1.7d VMS-SunOS

LZ version = v01

WIND/WAVES Summary Plot (Page 1) for 16-JUN-1997, DOY = 167

DAILY Tue Sep 23, 2008
 Re = 72.87 (70.44, -18.32, -3.61 GSE)



RAD2
 Antenna Ey
 Mode LIN(1)
 SUM/SEP SUM
 Toggle OFF

RAD1
 Antenna Ex
 Mode LIS(2,3)
 SUM/SEP SUM
 Toggle OFF

TNR
 Antenna ExEy
 Mode A-32
 Sweep ABCDE