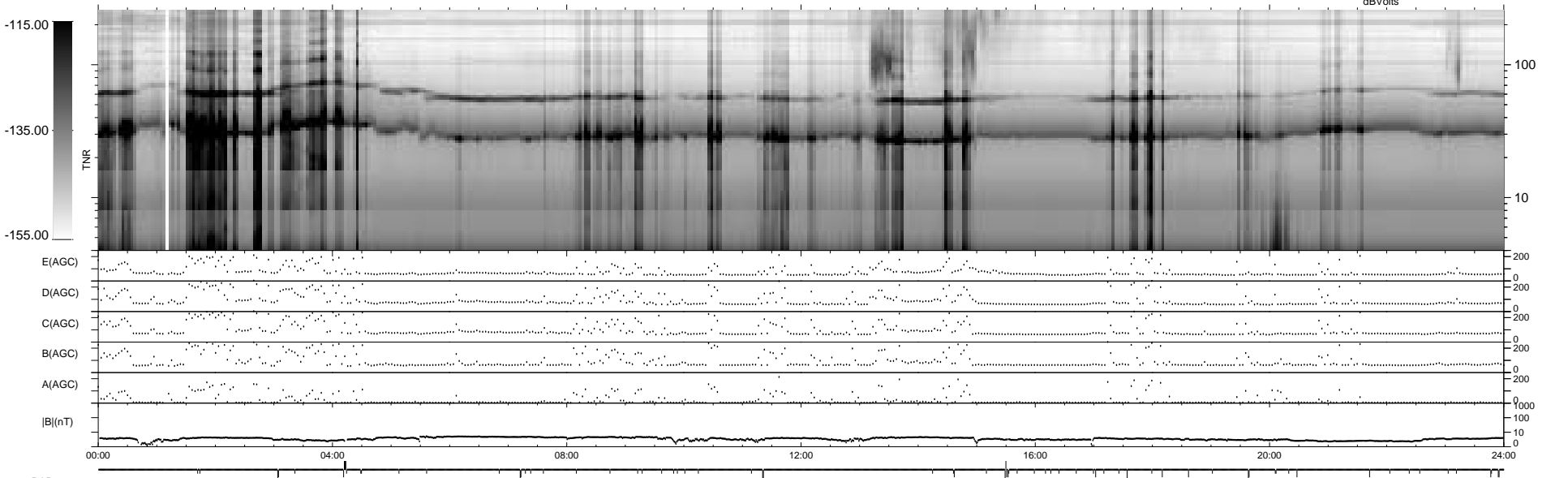
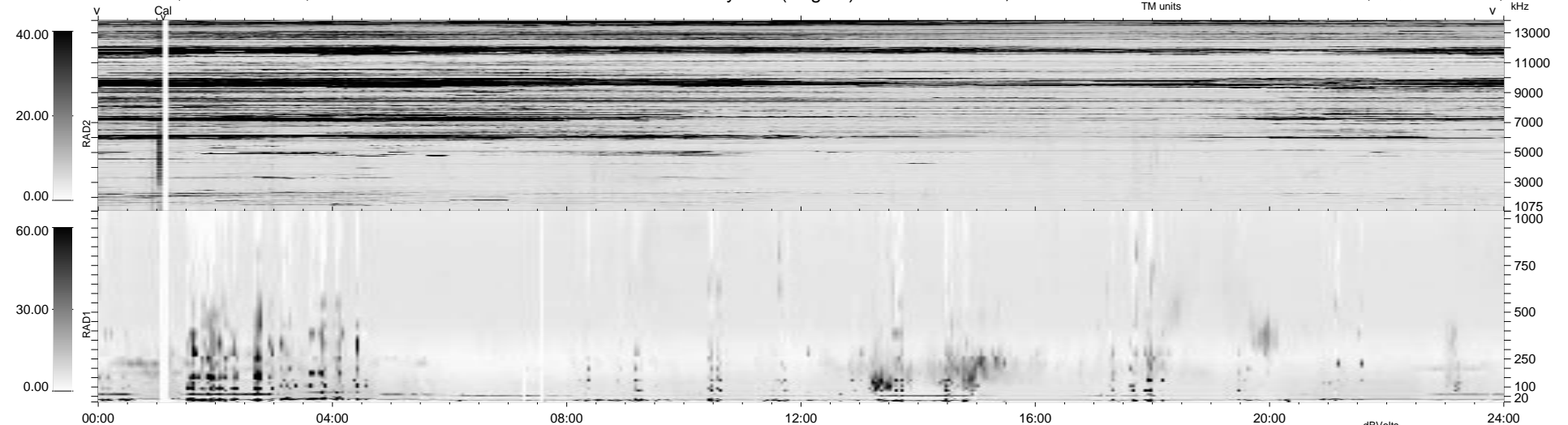


68 bad + 1806 good MF/1878MF projected (96%) - 4 missing MFs  
 Avg interval = 180 secs  
 Re = 26.90 (15.06, -22.27, 0.96 GSE)

1.7d VMS-SunOS LZ version = v01

### WIND/WAVES Summary Plot (Page 1) for 13-JUN-1997, DOY = 164

DAILY Tue Sep 23, 2008  
 Re = 42.83 (35.03, -24.63, -0.26 GSE)



E(AGC) .....  
 D(AGC) .....  
 C(AGC) .....  
 B(AGC) .....  
 A(AGC) .....  
 |B|(nT) .....  
 00:00 04:00 08:00 12:00 16:00 20:00 24:00

RAD2  
 Antenna Ey .....  
 Mode LIN(1) .....  
 SUM/SEP SUM .....  
 Toggle OFF .....  
 RAD1  
 Antenna Ex .....  
 Mode LIS(2,3) .....  
 SUM/SEP SUM .....  
 Toggle OFF .....  
 TNR  
 Antenna ExEy .....  
 Mode A-32 .....  
 Sweep ABCDE .....