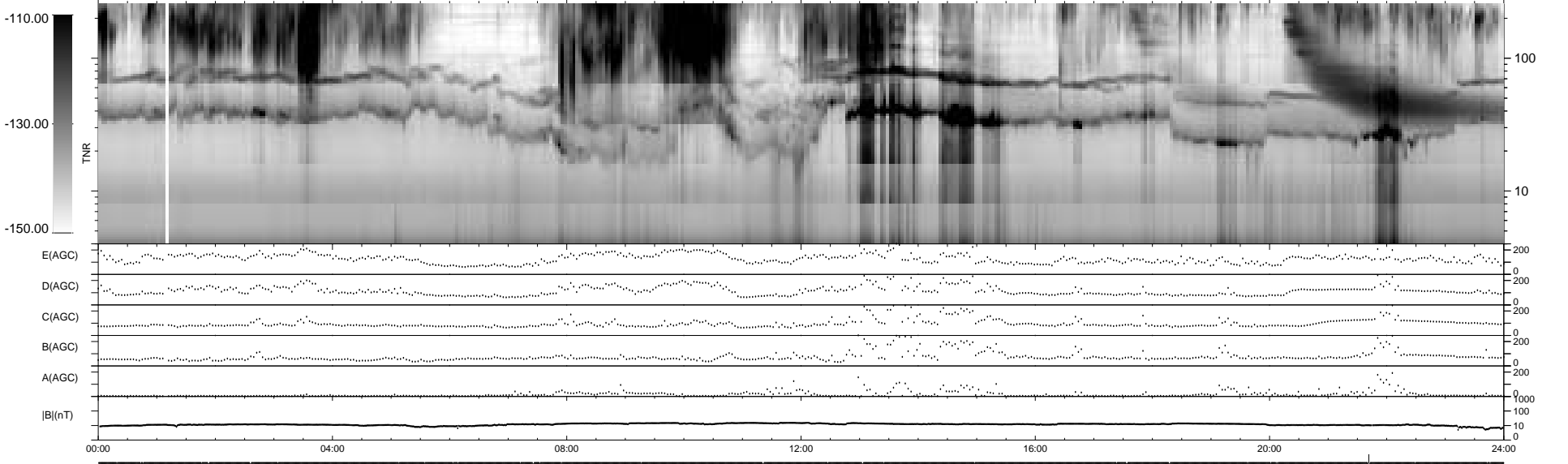
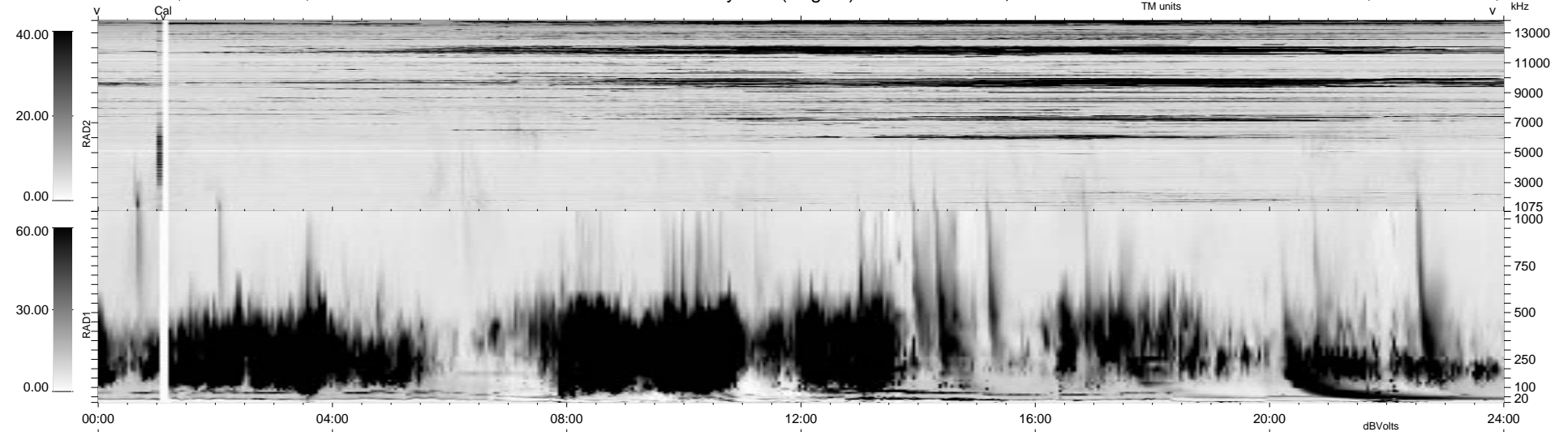


40 bad + 1837 good MF/1878MF projected (97%) - 1 missing MF  
 Avg interval = 180 secs  
 Re = 56.22 (38.92, 40.12, -5.98 GSE)

1.7d VMS-SunOS LZ version = v01  
 DAILY Tue Sep 23, 2008  
 Re = 43.38 (24.38, 35.56, -4.77 GSE)

WIND/WAVES Summary Plot (Page 1) for 09-JUN-1997, DOY = 160



RAD2  
 Antenna Ey .....  
 Mode LIN(1) .....  
 SUM/SEP SUM .....  
 Toggle OFF .....  
 RAD1  
 Antenna Ex .....  
 Mode LIS(2,3) .....  
 SUM/SEP SUM .....  
 Toggle OFF .....  
 TNR  
 Antenna ExEy .....  
 Mode A-32 .....  
 Sweep ABCDE .....