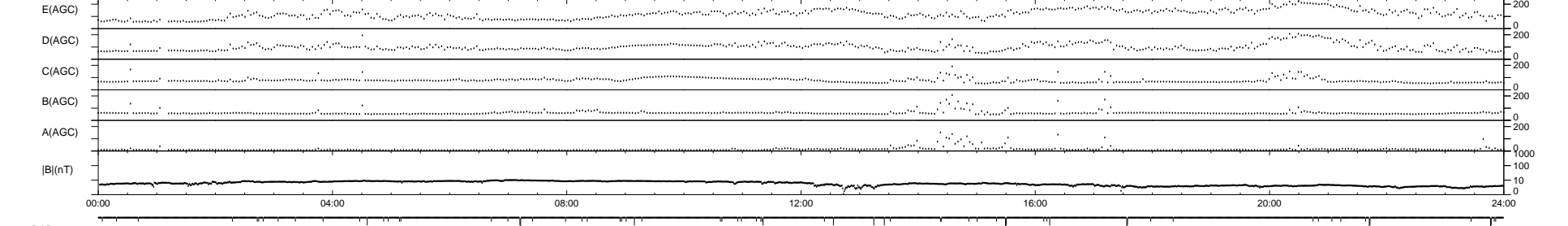
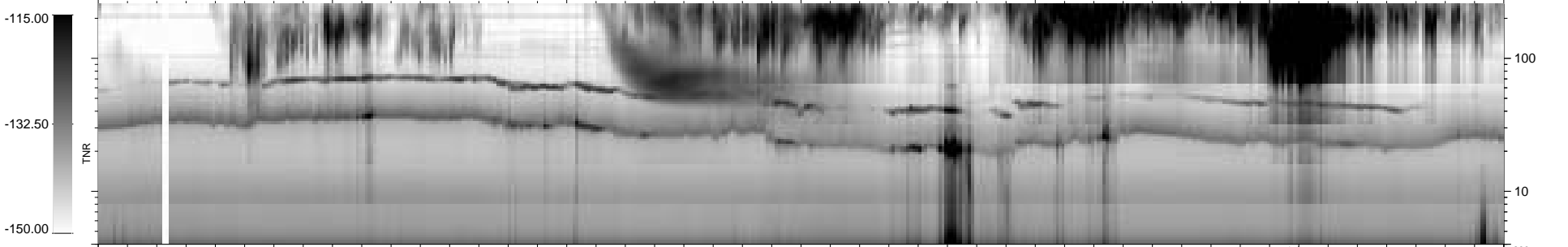
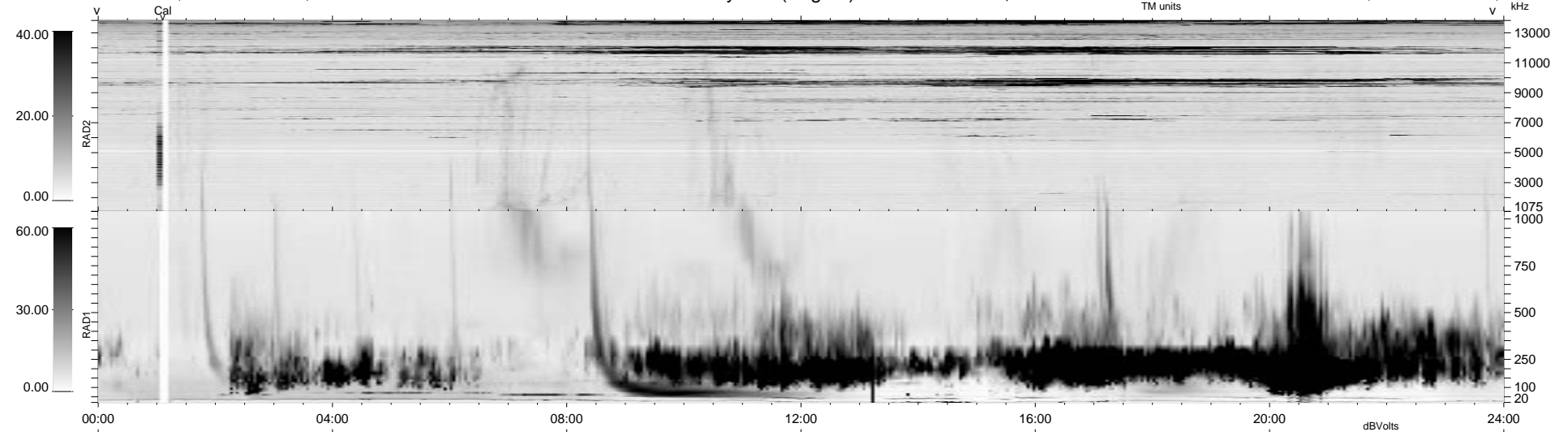


68 bad + 1810 good MF/1878MF projected (96%) - 0 missing MFs
 Avg interval = 180 secs
 Re = 78.69 (66.79, 41.31, -4.96 GSE)

1.7d VMS-SunOS LZ version = v01

WIND/WAVES Summary Plot (Page 1) for 07-JUN-1997, DOY = 158

DAILY Tue Sep 23, 2008
 Re = 68.42 (53.53, 42.20, -5.86 GSE)



```

RAD2
Antenna Ey .....
Mode LIN(1) .....
SUM/SEP SUM .....
Toggle OFF .....

RAD1
Antenna Ex .....
Mode LIS(2,3) .....
SUM/SEP SUM .....
Toggle OFF .....

TNR
Antenna ExEy .....
Mode A-32 .....
Sweep ABCDE .....
  
```