

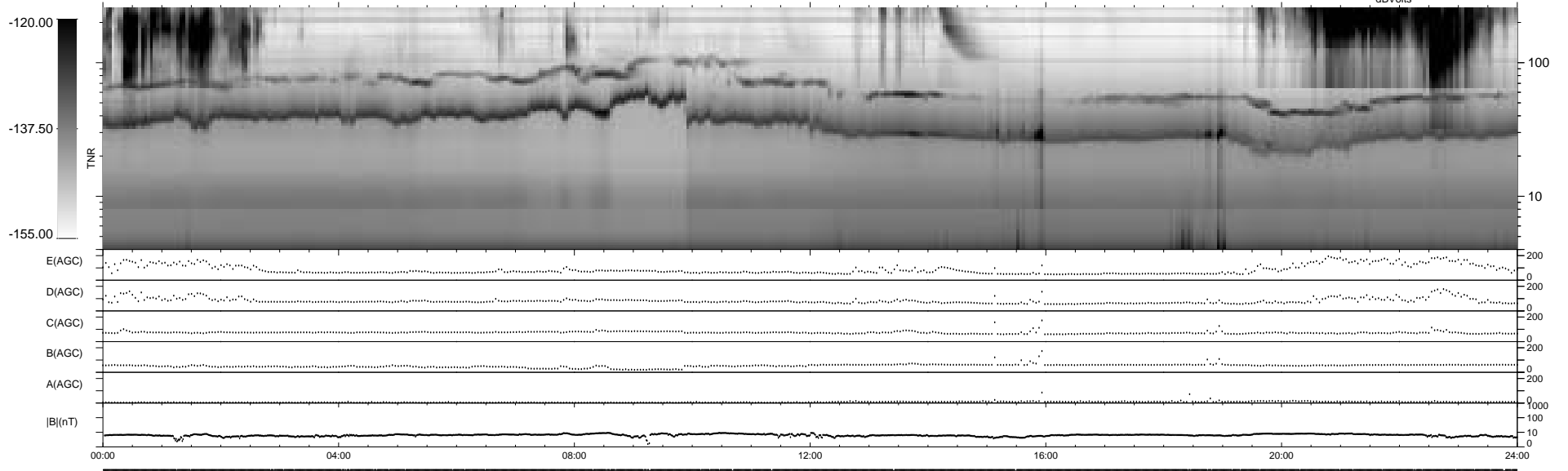
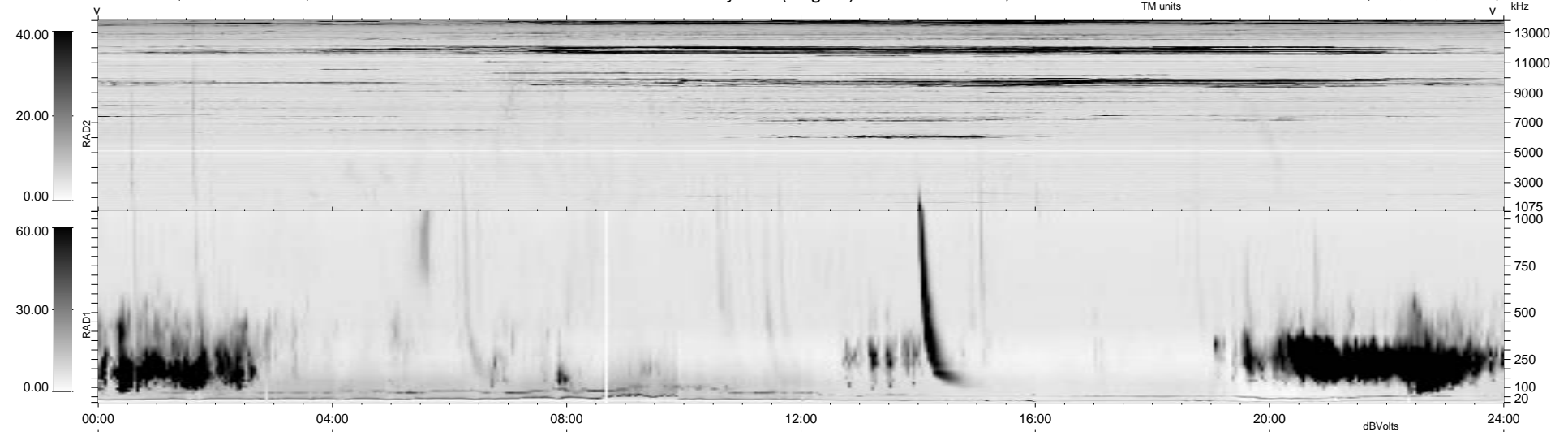
58 bad + 1820 good MF/1878MF projected (96%) - 0 missing MFs  
 Avg interval = 180 secs  
 Re = 87.97 (78.50, 39.50, -3.93 GSE)

1.7d VMS-SunOS LZ version = v01

DAILY Tue Sep 23, 2008

Re = 78.76 (66.88, 41.30, -4.96 GSE)

### WIND/WAVES Summary Plot (Page 1) for 06-JUN-1997, DOY = 157



RAD2  
 Antenna Ey  
 Mode LIN(1)  
 SUM/SEP SUM  
 Toggle OFF

RAD1  
 Antenna Ex  
 Mode LIS(2,3)  
 SUM/SEP SUM  
 Toggle OFF

TNR  
 Antenna ExEy  
 Mode A-32  
 Sweep ABCDE