

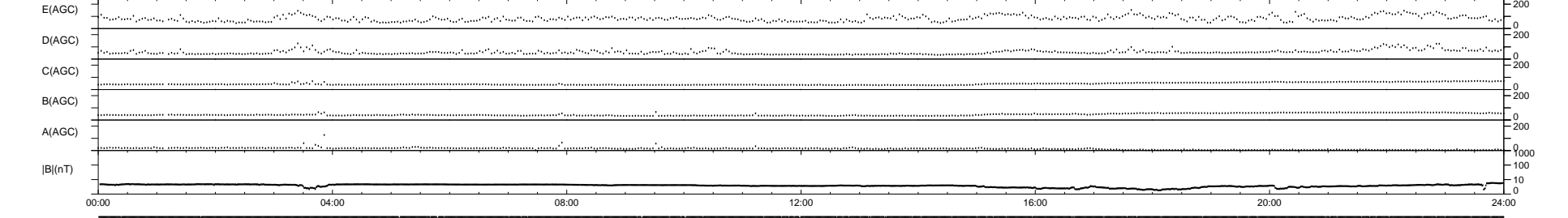
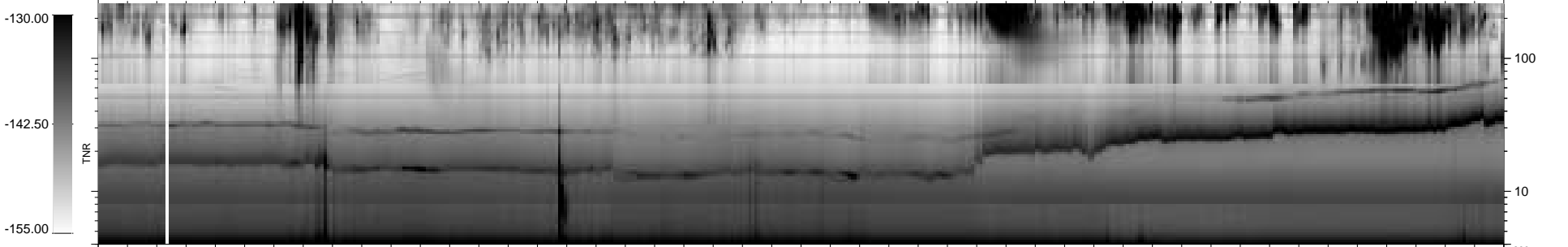
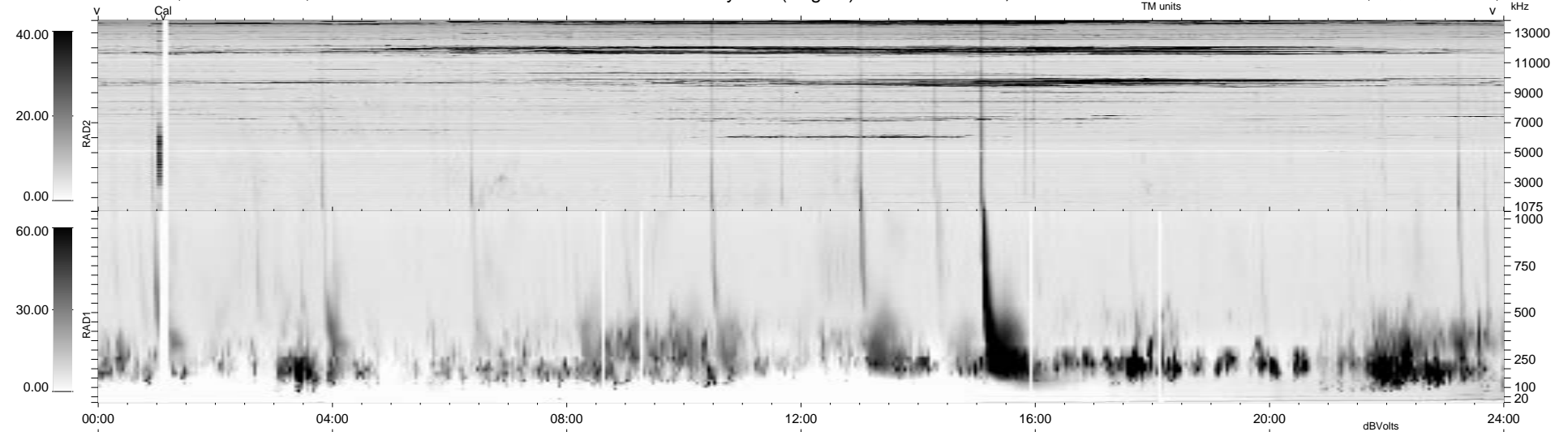
64 bad + 1814 good MF/1878MF projected (96%) - 0 missing MFs
 Avg interval = 180 secs
 Re = - 96.46 (88.91, 37.28, -2.83 GSE)

1.7d VMS-SunOS

LZ version = v01

WIND/WAVES Summary Plot (Page 1) for 05-JUN-1997, DOY = 156

DAILY Tue Sep 23, 2008
 Re = 88.03 (78.58, 39.49, -3.92 GSE)



```

RAD2
Antenna Ey .....
Mode LIN(1) .....
SUM/SEP SUM .....
Toggle OFF .....

RAD1
Antenna Ex .....
Mode LIS(2,3) .....
SUM/SEP SUM .....
Toggle OFF .....

TNR
Antenna ExEy .....
Mode A-32 .....
Sweep ABCDE .....
  
```