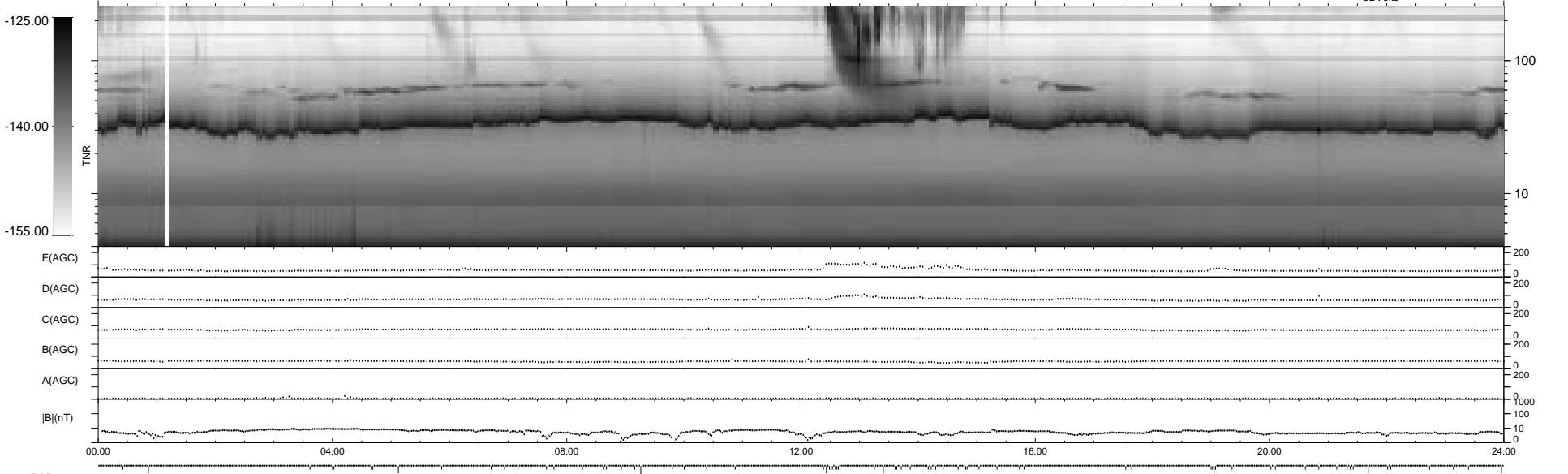
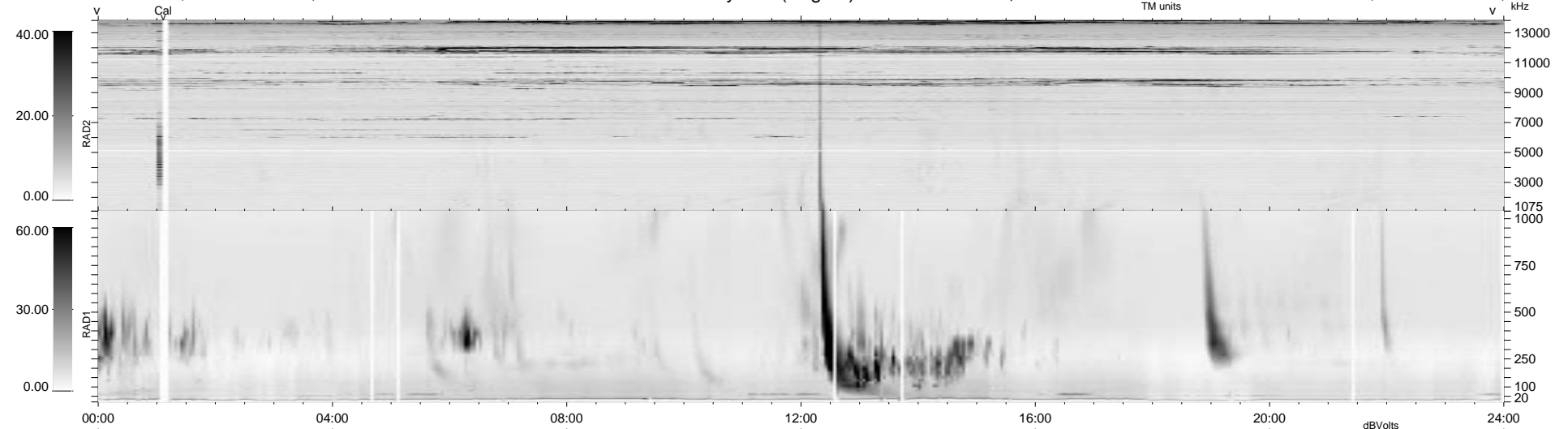


72 bad + 867 good MF/939MF projected (92%) - 0 missing MFs
 Avg interval = 180 secs
 Re = 146.03 (144.67, 18.82, 6.31 GSE)

1.7d VMS-SunOS LZ version = v01
 DAILY Tue Sep 23, 2008
 Re = 141.18 (139.55, 20.77, 5.22 GSE)

WIND/WAVES Summary Plot (Page 1) for 28-MAY-1997, DOY = 148



RAD2
 Antenna Ey
 Mode LIN(1)
 SUM/SEP SUM
 Toggle OFF

RAD1
 Antenna Ex
 Mode LIS(2,3)
 SUM/SEP SUM
 Toggle OFF

TNR
 Antenna ExEy
 Mode A-32
 Sweep ABCDE