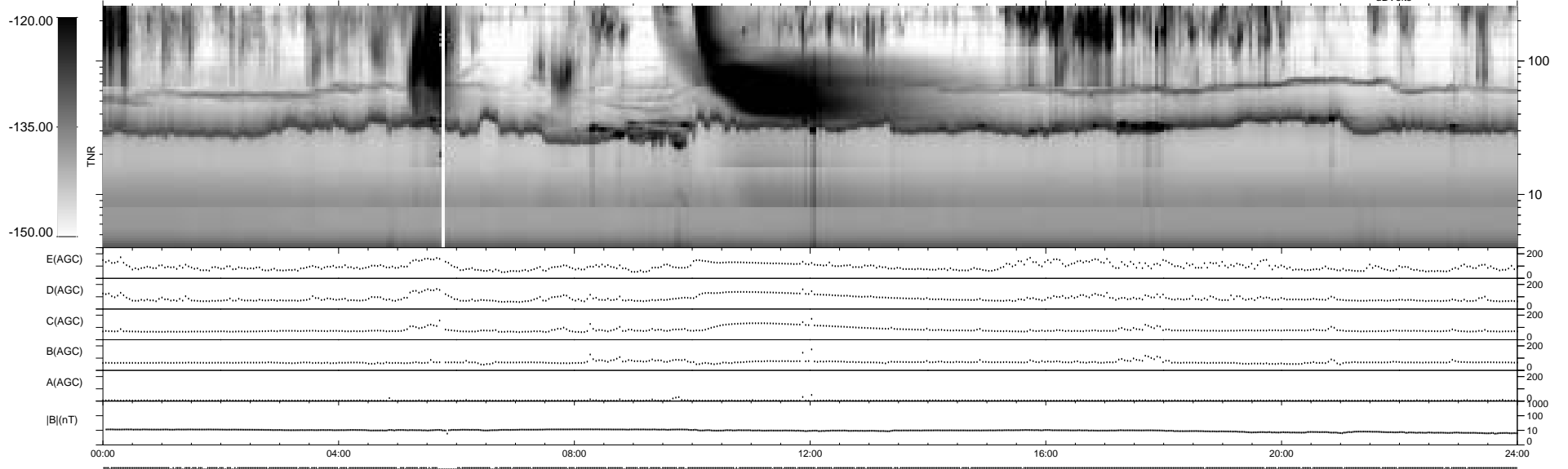
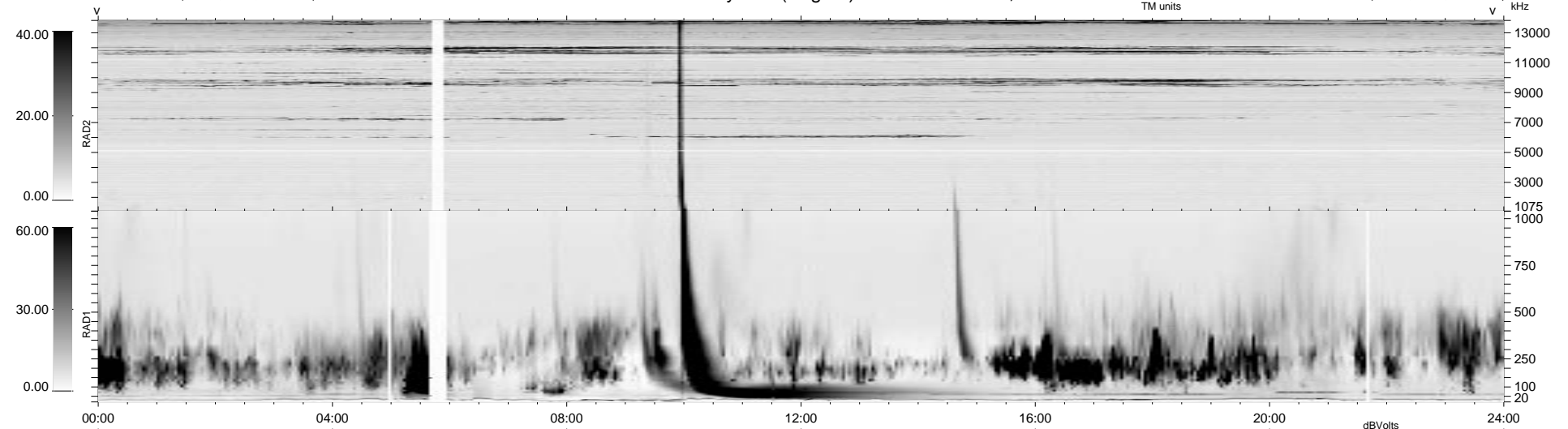


85 bad + 854 good MF/939MF projected (90%) - 0 missing MFs
 Avg interval = 180 secs
 Re = 150.64 (149.50, 16.99, 7.38 GSE)

1.7d VMS-SunOS LZ version = v01
 DAILY Tue Sep 23, 2008
 Re = 146.06 (144.71, 18.81, 6.32 GSE)

WIND/WAVES Summary Plot (Page 1) for 27-MAY-1997, DOY = 147



```

RAD2
Antenna Ey .....
Mode LIN(1) .....
SUM/SEP SUM .....
Toggle OFF .....

RAD1
Antenna Ex .....
Mode LIS(2,3) .....
SUM/SEP SUM .....
Toggle OFF .....

TNR
Antenna ExEy .....
Mode A-32 .....
Sweep ABCDE .....
  
```