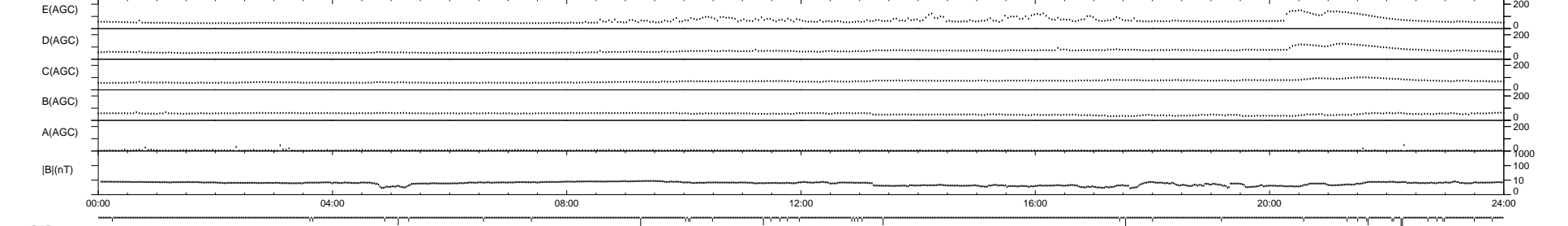
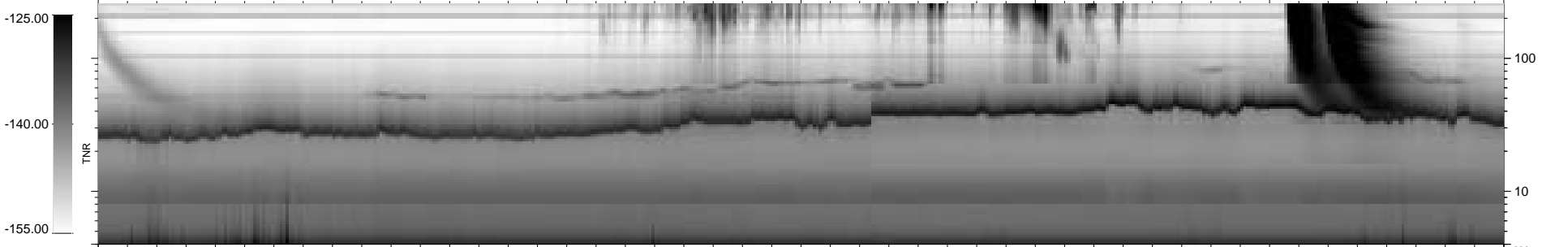
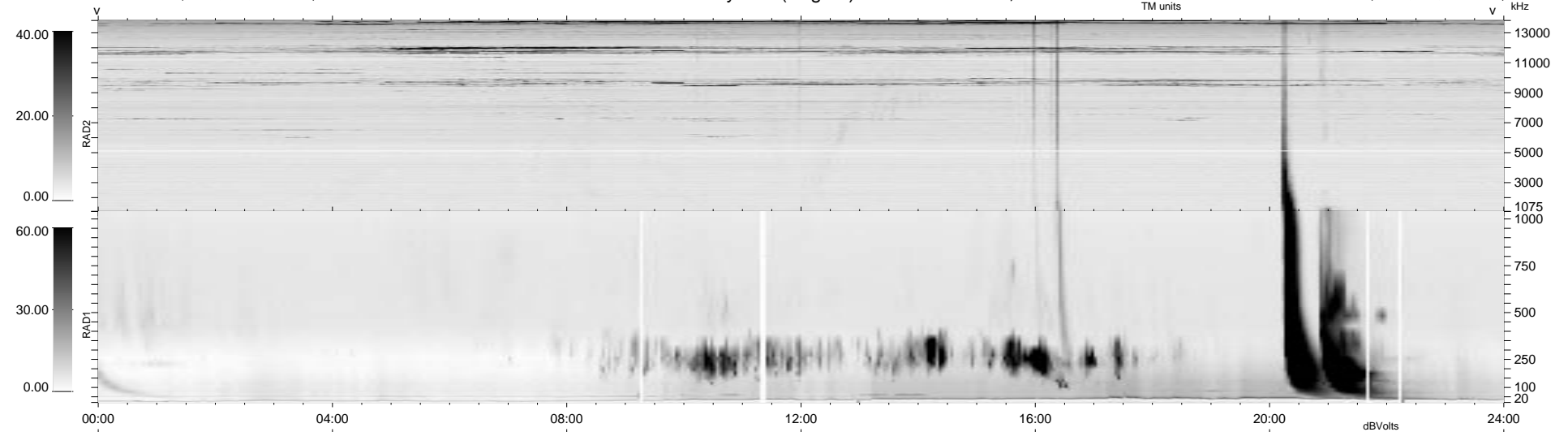


42 bad + 897 good MF/939MF projected (95%) - 0 missing MFs  
 Avg interval = 180 secs  
 Re = 173.94 (173.23, 8.57, 13.10 GSE)

1.7d VMS-SunOS LZ version = v01  
 DAILY Tue Sep 23, 2008  
 Re = 170.51 (169.79, 9.69, 12.24 GSE)

WIND/WAVES Summary Plot (Page 1) for 21-MAY-1997, DOY = 141



RAD2  
 Antenna Ey  
 Mode LIN(1)  
 SUM/SEP SUM  
 Toggle OFF

RAD1  
 Antenna Ex  
 Mode LIS(2,3)  
 SUM/SEP SUM  
 Toggle OFF

TNR  
 Antenna ExEy  
 Mode A-32  
 Sweep ABCDE